



CD148 Polyclonal Antibody

Catalog No	BYab-14021
Isotype	IgG
Reactivity	Human;Rat;Mouse;
Applications	WB;IHC;IF;ELISA
Gene Name	PTPRJ
Protein Name	Receptor-type tyrosine-protein phosphatase eta
Immunogen	The antiserum was produced against synthesized peptide derived from the Internal region of human PTPRJ. AA range:861-910
Specificity	CD148 Polyclonal Antibody detects endogenous levels of CD148 protein.
Formulation	Liquid in PBS containing 50% glycerol, 0.5% BSA and 0.02% sodium azide.
Source	Polyclonal, Rabbit,IgG
Purification	The antibody was affinity-purified from rabbit antiserum by affinity-chromatography using epitope-specific immunogen.
Dilution	WB: 1/500 - 1/2000. IHC-p: 1/100-1/300. ELISA: 1/20000.. IF 1:50-200
Concentration	1 mg/ml
Purity	≥90%
Storage Stability	-20°C/1 year
Synonyms	PTPRJ; DEP1; Receptor-type tyrosine-protein phosphatase eta; Protein-tyrosine phosphatase eta; R-PTP-eta; Density-enhanced phosphatase 1; DEP-1; HPTP eta; Protein-tyrosine phosphatase receptor type J; R-PTP-J; CD148
Observed Band	150kD
Cell Pathway	Cell membrane; Single-pass type I membrane protein. Cell projection, ruffle membrane . Cell junction. After T-cell stimulation, it is temporarily excluded from immunological synapses.
Tissue Specificity	Expressed in the promyelocytic cell line HL-60, the granulocyte-macrophage colony-stimulating factor-dependent leukemic cell line F-36P, and the IL3 and erythropoietin-dependent leukemic cell line F-36E. Expressed predominantly in epithelial cells and lymphocytes. Enhanced expression at high cell density.
Function	catalytic activity:Protein tyrosine phosphate + H(2)O = protein tyrosine + phosphate.,disease:Defects in PTPRJ are found in cancers of colon, lung, and breast.,function:May contribute to the mechanism of contact inhibition of cell growth.,PTM:N- and O-glycosylated.,similarity:Belongs to the protein-tyrosine phosphatase family. Receptor class 3 subfamily.,similarity:Contains 1

Nanjing BYabscience technology Co.,Ltd



tyrosine-protein phosphatase domain.,similarity:Contains 9 fibronectin type-III domains.,

Background

The protein encoded by this gene is a member of the protein tyrosine phosphatase (PTP) family. PTPs are known to be signaling molecules that regulate a variety of cellular processes, including cell growth, differentiation, mitotic cycle, and oncogenic transformation. This PTP possesses an extracellular region containing five fibronectin type III repeats, a single transmembrane region, and a single intracytoplasmic catalytic domain, and thus represents a receptor-type PTP. This protein is present in all hematopoietic lineages, and was shown to negatively regulate T cell receptor signaling possibly through interfering with the phosphorylation of Phospholipase C Gamma 1 and Linker for Activation of T Cells. This protein can also dephosphorylate the PDGF beta receptor, and may be involved in UV-induced signal transduction. Multiple transcript variants encoding different isoforms

matters needing attention

Avoid repeated freezing and thawing!

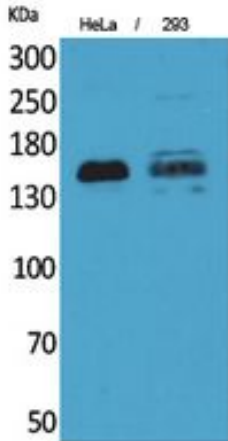
Usage suggestions

This product can be used in immunological reaction related experiments. For more information, please consult technical personnel.

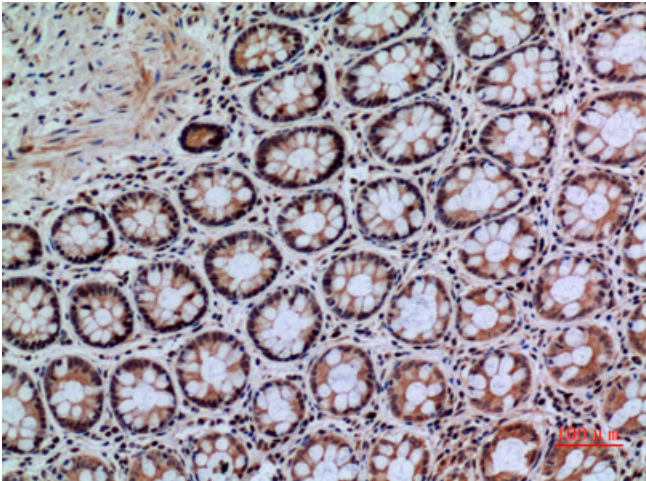
Nanjing BYabscience technology Co.,Ltd



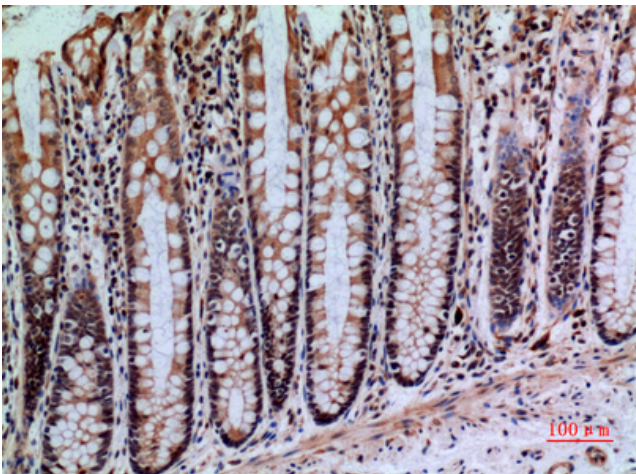
Products Images



Western Blot analysis of HeLa, 293 cells using CD148 Polyclonal Antibody. Secondary antibody(catalog#:RS0002) was diluted at 1:20000 cells nucleus extracted by Minute TM Cytoplasmic and Nuclear Fractionation kit (SC-003, Inventbiotech, MN, USA).



Immunohistochemical analysis of paraffin-embedded human-colon, antibody was diluted at 1:100



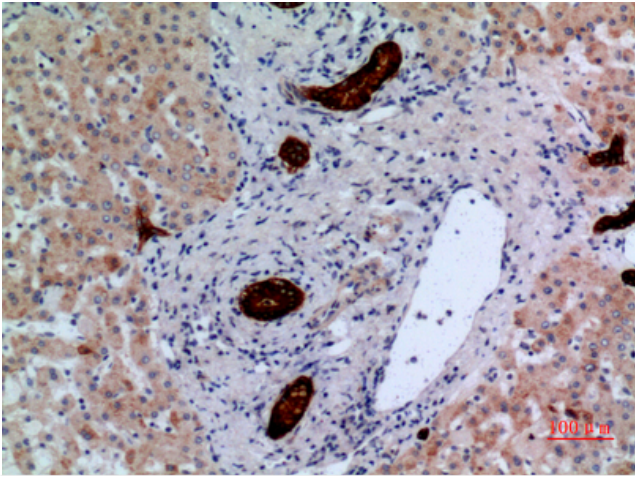
Immunohistochemical analysis of paraffin-embedded human-colon, antibody was diluted at 1:100

Nanjing BYabscience technology Co.,Ltd

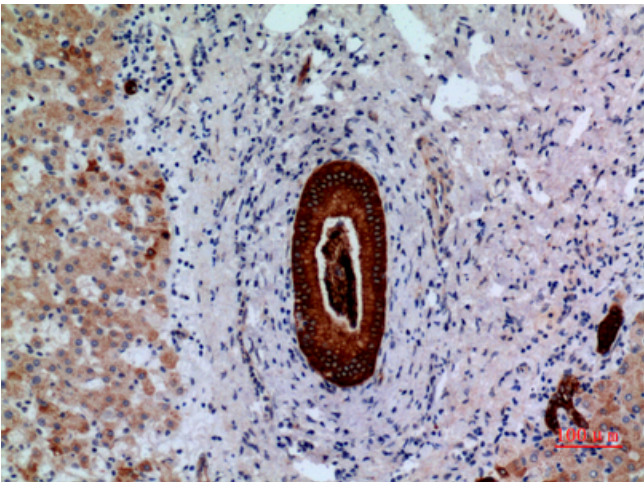
网址: www.njbybio.com

官方热线: 025-5229-8998

监督电话: 15950492658



Immunohistochemical analysis of paraffin-embedded human-liver, antibody was diluted at 1:100



Immunohistochemical analysis of paraffin-embedded human-liver, antibody was diluted at 1:100