



# CD158z Polyclonal Antibody

<b>Catalog No</b>	BYab-14003
<b>Isotype</b>	IgG
<b>Reactivity</b>	Human;Rat;Mouse;
<b>Applications</b>	WB;IHC;IF;ELISA
<b>Gene Name</b>	KIR3DL3
<b>Protein Name</b>	Killer cell immunoglobulin-like receptor 3DL3
<b>Immunogen</b>	The antiserum was produced against synthesized peptide derived from the Internal region of human KIR3DL3. AA range:231-280
<b>Specificity</b>	CD158z Polyclonal Antibody detects endogenous levels of CD158z protein.
<b>Formulation</b>	Liquid in PBS containing 50% glycerol, 0.5% BSA and 0.02% sodium azide.
<b>Source</b>	Polyclonal, Rabbit,IgG
<b>Purification</b>	The antibody was affinity-purified from rabbit antiserum by affinity-chromatography using epitope-specific immunogen.
<b>Dilution</b>	WB: 1/500 - 1/2000. IHC-p: 1:100-300 ELISA: 1/20000.. IF 1:50-200
<b>Concentration</b>	1 mg/ml
<b>Purity</b>	≥90%
<b>Storage Stability</b>	-20°C/1 year
<b>Synonyms</b>	KIR3DL3; CD158Z; KIR3DL7; KIRC1; Killer cell immunoglobulin-like receptor 3DL3; CD158 antigen-like family member Z; Killer cell inhibitory receptor 1; CD158z
<b>Observed Band</b>	45kD
<b>Cell Pathway</b>	Cell membrane; Single-pass type I membrane protein.
<b>Tissue Specificity</b>	Peripheral blood,
<b>Function</b>	function:Receptor on natural killer cells. May inhibit the activity of NK cells thus preventing cell lysis.,similarity:Belongs to the immunoglobulin superfamily.,similarity:Contains 3 Ig-like C2-type (immunoglobulin-like) domains.,
<b>Background</b>	killer cell immunoglobulin like receptor, three Ig domains and long cytoplasmic tail 3(KIR3DL3) Homo sapiens Killer cell immunoglobulin-like receptors (KIRs) are transmembrane glycoproteins expressed by natural killer cells and subsets of T cells. The KIR genes are polymorphic and highly homologous and they are found in a cluster on chromosome 19q13.4 within the 1 Mb leukocyte receptor

Nanjing BYabscience technology Co.,Ltd



complex (LRC). The gene content of the KIR gene cluster varies among haplotypes, although several "framework" genes are found in all haplotypes (KIR3DL3, KIR3DP1, KIR3DL4, KIR3DL2). The KIR proteins are classified by the number of extracellular immunoglobulin domains (2D or 3D) and by whether they have a long (L) or short (S) cytoplasmic domain. KIR proteins with the long cytoplasmic domain transduce inhibitory signals upon ligand binding via an immune tyrosine-based inhibitory motif (ITIM), while KIR proteins with the short cytoplasmic domain lack the

**matters needing attention**

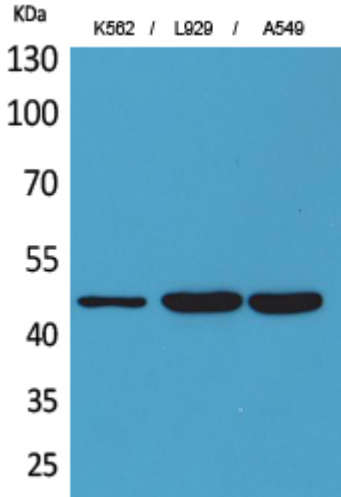
Avoid repeated freezing and thawing!

**Usage suggestions**

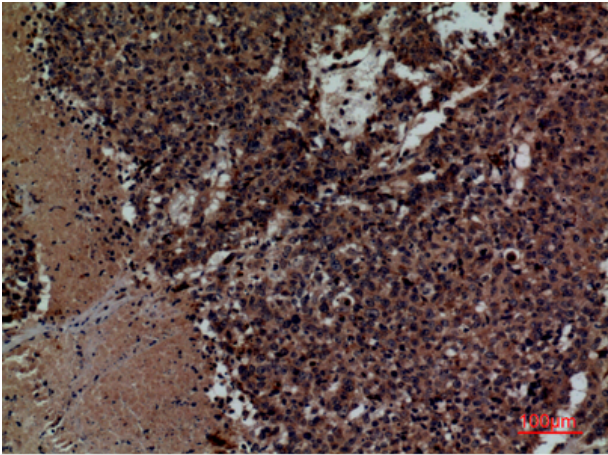
This product can be used in immunological reaction related experiments. For more information, please consult technical personnel.



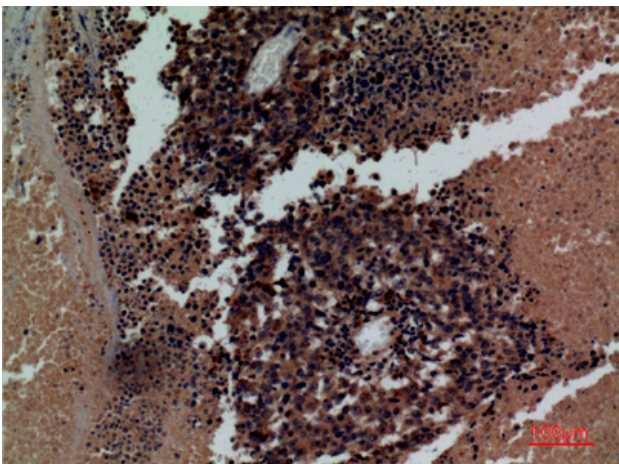
## Products Images



Western Blot analysis of K562, L929, A549 cells using CD158z Polyclonal Antibody. Secondary antibody(catalog#:RS0002) was diluted at 1:20000

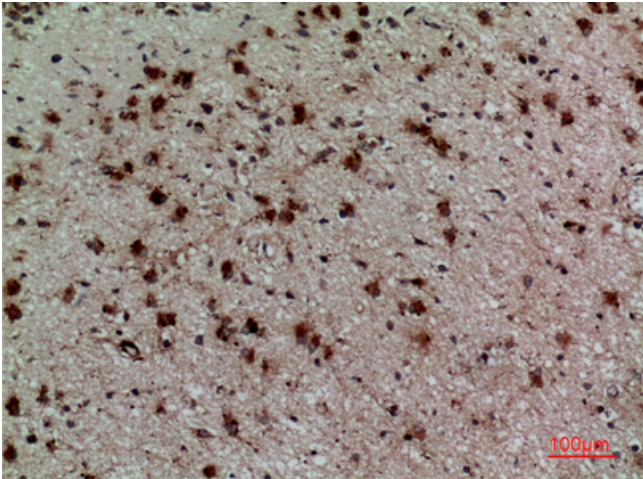


Immunohistochemical analysis of paraffin-embedded human-lung-cancer, antibody was diluted at 1:100

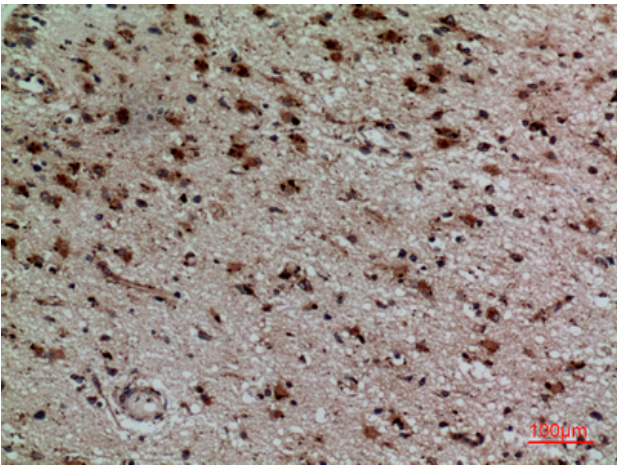


Immunohistochemical analysis of paraffin-embedded human-lung-cancer, antibody was diluted at 1:100

Nanjing BYabscience technology Co.,Ltd



Immunohistochemical analysis of paraffin-embedded human-brain, antibody was diluted at 1:100



Immunohistochemical analysis of paraffin-embedded human-brain, antibody was diluted at 1:100