



CD229 Polyclonal Antibody

Catalog No	BYab-14002
Isotype	IgG
Reactivity	Human;Rat;Mouse;
Applications	WB;IHC;IF;ELISA
Gene Name	LY9
Protein Name	T-lymphocyte surface antigen Ly-9
Immunogen	The antiserum was produced against synthesized peptide derived from the Internal region of human LY9. AA range:261-310
Specificity	CD229 Polyclonal Antibody detects endogenous levels of CD229 protein.
Formulation	Liquid in PBS containing 50% glycerol, 0.5% BSA and 0.02% sodium azide.
Source	Polyclonal, Rabbit,IgG
Purification	The antibody was affinity-purified from rabbit antiserum by affinity-chromatography using epitope-specific immunogen.
Dilution	WB: 1/500 - 1/2000. IHC-p: 1:100-300 ELISA: 1/20000.. IF 1:50-200
Concentration	1 mg/ml
Purity	≥90%
Storage Stability	-20°C/1 year
Synonyms	LY9; CDABP0070; T-lymphocyte surface antigen Ly-9; Cell surface molecule Ly-9; Lymphocyte antigen 9; CD229
Observed Band	72kD
Cell Pathway	Membrane; Single-pass type I membrane protein. Cell membrane .
Tissue Specificity	Increased surface expression on T-cells of systemic lupus erythematosus (SLE) patients.
Function	alternative products:Experimental confirmation may be lacking for some isoforms,function:May participate in adhesion reactions between T lymphocytes and accessory cells by homophilic interaction.,similarity:Contains 2 Ig-like C2-type (immunoglobulin-like) domains.,similarity:Contains 2 Ig-like V-type (immunoglobulin-like) domains.,
Background	LY9 belongs to the SLAM family of immunomodulatory receptors (see SLAMF1; MIM 603492) and interacts with the adaptor molecule SAP (SH2D1A; MIM 300490) (Graham et al., 2006 [PubMed 16365421]).[supplied by OMIM, Mar 2008],

Nanjing BYabscience technology Co.,Ltd



matters needing attention

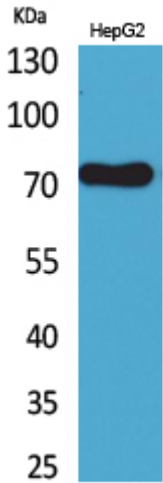
Avoid repeated freezing and thawing!

Usage suggestions

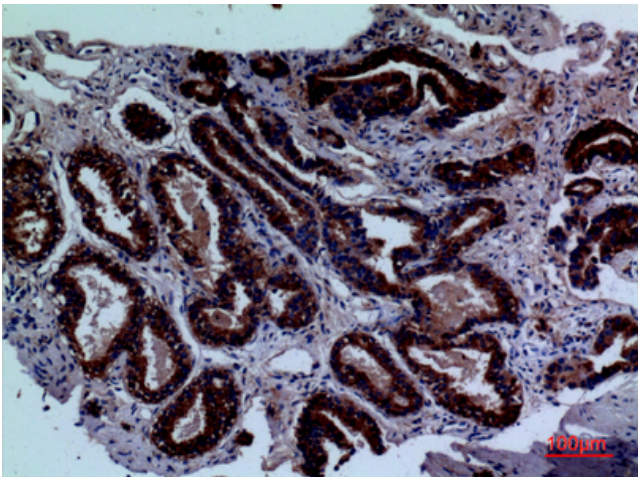
This product can be used in immunological reaction related experiments. For more information, please consult technical personnel.



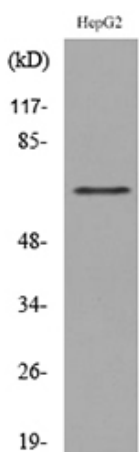
Products Images



Western Blot analysis of HepG2 cells using CD229 Polyclonal Antibody. Secondary antibody(catalog#:RS0002) was diluted at 1:20000



Immunohistochemical analysis of paraffin-embedded human-prostate-cancer, antibody was diluted at 1:100



Western blot analysis of lysate from HepG2 cells, using LY9 Antibody.