



CD116 Polyclonal Antibody

Catalog No	BYab-13998
Isotype	IgG
Reactivity	Human;Rat;Mouse;
Applications	WB;IHC;IF;ELISA
Gene Name	CSF2RA
Protein Name	Granulocyte-macrophage colony-stimulating factor receptor subunit alpha
Immunogen	The antiserum was produced against synthesized peptide derived from the Internal region of human CSF2RA. AA range:121-170
Specificity	CD116 Polyclonal Antibody detects endogenous levels of CD116 protein.
Formulation	Liquid in PBS containing 50% glycerol, 0.5% BSA and 0.02% sodium azide.
Source	Polyclonal, Rabbit,IgG
Purification	The antibody was affinity-purified from rabbit antiserum by affinity-chromatography using epitope-specific immunogen.
Dilution	WB: 1/500 - 1/2000. IHC-p: 1:100-300 ELISA: 1/20000.. IF 1:50-200
Concentration	1 mg/ml
Purity	≥90%
Storage Stability	-20°C/1 year
Synonyms	CSF2RA; CSF2R; CSF2RY; Granulocyte-macrophage colony-stimulating factor receptor subunit alpha; GM-CSF-R-alpha; GMCSFR-alpha; GMR-alpha; CDw116; CD116
Observed Band	44kD
Cell Pathway	Cell membrane; Single-pass type I membrane protein.; [Isoform 3]: Secreted .; [Isoform 4]: Secreted .; [Isoform 6]: Secreted .
Tissue Specificity	Blood,Placenta,Synovial membrane tissue,Uterus,
Function	domain:The box 1 motif is required for JAK interaction and/or activation.,domain:The WSXWS motif appears to be necessary for proper protein folding and thereby efficient intracellular transport and cell-surface receptor binding.,function:Low affinity receptor for granulocyte-macrophage colony-stimulating factor. Transduces a signal that results in the proliferation, differentiation, and functional activation of hematopoietic cells.,miscellaneous:The gene encoding for this protein is located in the pseudoautosomal region 1 (PAR1) of X and Y chromosomes.,similarity:Belongs to the type I cytokine receptor family. Type 5 subfamily.,subunit:Heterodimer of an alpha and a beta subunit. The beta

Nanjing BYabscience technology Co.,Ltd



subunit is common to the IL3, IL5 and GM-CSF receptors.,

Background

The protein encoded by this gene is the alpha subunit of the heterodimeric receptor for colony stimulating factor 2, a cytokine which controls the production, differentiation, and function of granulocytes and macrophages. The encoded protein is a member of the cytokine family of receptors. This gene is found in the pseudoautosomal region (PAR) of the X and Y chromosomes. Multiple transcript variants encoding different isoforms have been found for this gene, with some of the isoforms being membrane-bound and others being soluble. [provided by RefSeq, Jul 2008],

matters needing attention

Avoid repeated freezing and thawing!

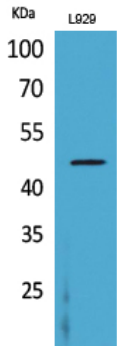
Usage suggestions

This product can be used in immunological reaction related experiments. For more information, please consult technical personnel.

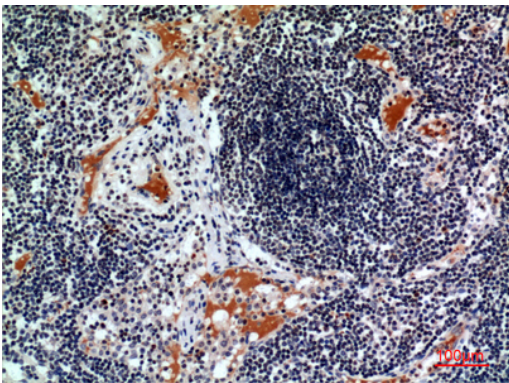
Nanjing BYabscience technology Co.,Ltd



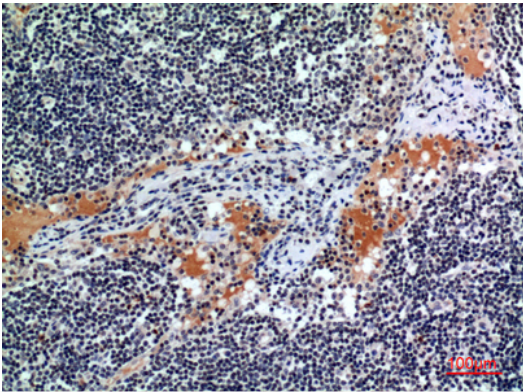
Products Images



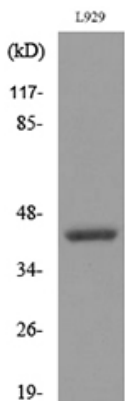
Western Blot analysis of L929 cells using CD116 Polyclonal Antibody. Secondary antibody(catalog#:RS0002) was diluted at 1:20000



Immunohistochemical analysis of paraffin-embedded human-lymph, antibody was diluted at 1:100



Immunohistochemical analysis of paraffin-embedded human-lymph, antibody was diluted at 1:100



Western blot analysis of lysate from L929 cells, using CSF2RA Antibody.