



CD48 Polyclonal Antibody

Catalog No	BYab-13987
Isotype	IgG
Reactivity	Human;Rat;Mouse;
Applications	WB;IHC;IF;ELISA
Gene Name	CD48
Protein Name	CD48 antigen
Immunogen	The antiserum was produced against synthesized peptide derived from the Internal region of human CD48. AA range:41-90
Specificity	CD48 Polyclonal Antibody detects endogenous levels of CD48 protein.
Formulation	Liquid in PBS containing 50% glycerol, 0.5% BSA and 0.02% sodium azide.
Source	Polyclonal, Rabbit,IgG
Purification	The antibody was affinity-purified from rabbit antiserum by affinity-chromatography using epitope-specific immunogen.
Dilution	WB: 1/500 - 1/2000. IHC-p: 1:100-300 ELISA: 1/20000.. IF 1:50-200
Concentration	1 mg/ml
Purity	≥90%
Storage Stability	-20°C/1 year
Synonyms	CD48; BCM1; BLAST1; CD48 antigen; B-lymphocyte activation marker BLAST-1; BCM1 surface antigen; Leukocyte antigen MEM-102; TCT.1; CD48
Observed Band	40kD
Cell Pathway	Cell membrane ; Lipid-anchor, GPI-anchor . Secreted .
Tissue Specificity	Widely expressed on all hematopoietic cells.
Function	function:Ligand for CD2. Might facilitate interaction between activated lymphocytes. Probably involved in regulating T-cell activation.,similarity:Contains 1 Ig-like C2-type (immunoglobulin-like) domain.,similarity:Contains 1 Ig-like V-type (immunoglobulin-like) domain.,
Background	This gene encodes a member of the CD2 subfamily of immunoglobulin-like receptors which includes SLAM (signaling lymphocyte activation molecules) proteins. The encoded protein is found on the surface of lymphocytes and other immune cells, dendritic cells and endothelial cells, and participates in activation and differentiation pathways in these cells. The encoded protein does not have a transmembrane domain, however, but is held at the cell surface by a GPI anchor

Nanjing BYabscience technology Co.,Ltd



via a C-terminal domain which maybe cleaved to yield a soluble form of the receptor. Multiple transcript variants encoding different isoforms have been found for this gene. [provided by RefSeq, Dec 2011],

matters needing attention

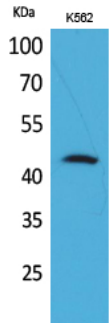
Avoid repeated freezing and thawing!

Usage suggestions

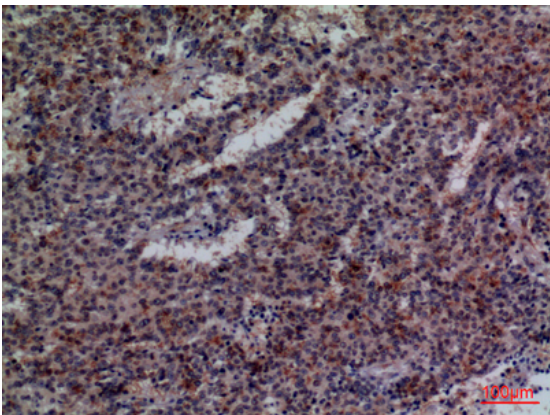
This product can be used in immunological reaction related experiments. For more information, please consult technical personnel.



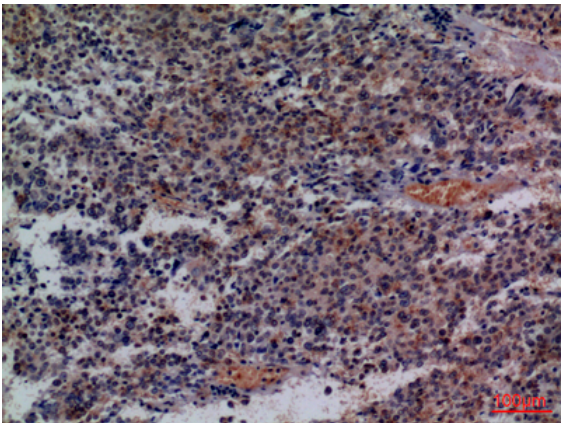
Products Images



Western Blot analysis of K562 cells using CD48 Polyclonal Antibody. Secondary antibody(catalog#:RS0002) was diluted at 1:20000



Immunohistochemical analysis of paraffin-embedded human-lung-cancer, antibody was diluted at 1:100



Immunohistochemical analysis of paraffin-embedded human-lung-cancer, antibody was diluted at 1:100



YT5247_4.jpg

Western blot analysis of lysate from K562 cells, using CD48 Antibody.