



# CD2 Polyclonal Antibody

<b>Catalog No</b>	BYab-13982
<b>Isotype</b>	IgG
<b>Reactivity</b>	Human;Rat;Mouse;
<b>Applications</b>	WB;IHC;IF;ELISA
<b>Gene Name</b>	CD2
<b>Protein Name</b>	T-cell surface antigen CD2
<b>Immunogen</b>	The antiserum was produced against synthesized peptide derived from the N-terminal region of human CD2. AA range:31-80
<b>Specificity</b>	CD2 Polyclonal Antibody detects endogenous levels of CD2 protein.
<b>Formulation</b>	Liquid in PBS containing 50% glycerol, 0.5% BSA and 0.02% sodium azide.
<b>Source</b>	Polyclonal, Rabbit,IgG
<b>Purification</b>	The antibody was affinity-purified from rabbit antiserum by affinity-chromatography using epitope-specific immunogen.
<b>Dilution</b>	WB: 1/500 - 1/2000. IHC-p: 1:100-300 ELISA: 1/20000.. IF 1:50-200
<b>Concentration</b>	1 mg/ml
<b>Purity</b>	≥90%
<b>Storage Stability</b>	-20°C/1 year
<b>Synonyms</b>	CD2; SRBC; T-cell surface antigen CD2; Erythrocyte receptor; LFA-2; LFA-3 receptor; Rosette receptor; T-cell surface antigen T11/Leu-5; CD2
<b>Observed Band</b>	39kD
<b>Cell Pathway</b>	Cell membrane ; Single-pass type I membrane protein .
<b>Tissue Specificity</b>	Expressed in natural killer cells (at protein level).
<b>Function</b>	function:CD2 interacts with lymphocyte function-associated antigen (LFA-3) and CD48/BCM1 to mediate adhesion between T-cells and other cell types. CD2 is implicated in the triggering of T-cells, the cytoplasmic domain is implicated in the signaling function.,online information:CD2 entry,similarity:Contains 1 Ig-like C2-type (immunoglobulin-like) domain.,similarity:Contains 1 Ig-like V-type (immunoglobulin-like) domain.,subunit:Interacts with CD2AP (By similarity). Interacts with PSTPIP1.,
<b>Background</b>	The protein encoded by this gene is a surface antigen found on all peripheral blood T-cells. The encoded protein interacts with LFA3 (CD58) on antigen presenting cells to optimize immune recognition. A locus control region (LCR) has

**Nanjing BYabscience technology Co.,Ltd**



been found in the 3&apos; flanking sequence of this gene. [provided by RefSeq, Jun 2016],

**matters needing attention**

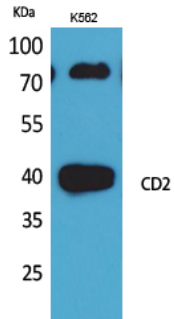
Avoid repeated freezing and thawing!

**Usage suggestions**

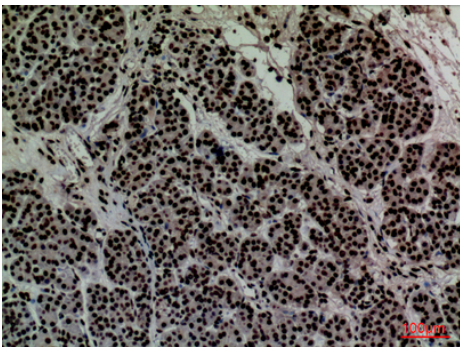
This product can be used in immunological reaction related experiments. For more information, please consult technical personnel.



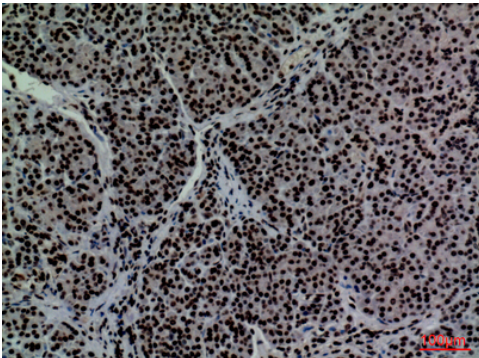
## Products Images



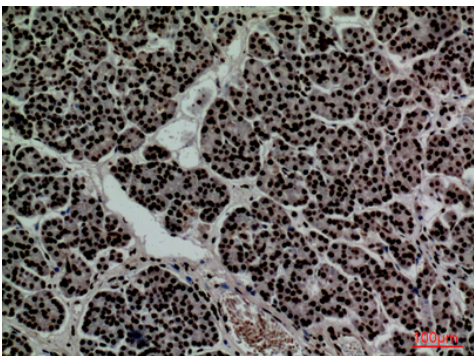
Western Blot analysis of K562 cells using CD2 Polyclonal Antibody. Secondary antibody(catalog#:RS0002) was diluted at 1:20000



Immunohistochemical analysis of paraffin-embedded human-pancreas, antibody was diluted at 1:100



Immunohistochemical analysis of paraffin-embedded human-pancreas, antibody was diluted at 1:100



Immunohistochemical analysis of paraffin-embedded human-pancreas, antibody was diluted at 1:100