



RhCG Polyclonal Antibody

Catalog No	BYab-13973
Isotype	IgG
Reactivity	Human;Rat;Mouse;
Applications	WB;IHC;IF;ELISA
Gene Name	RHCG
Protein Name	Ammonium transporter Rh type C
Immunogen	Synthesized peptide derived from the Internal region of human RhCG.
Specificity	RhCG Polyclonal Antibody detects endogenous levels of RhCG protein.
Formulation	Liquid in PBS containing 50% glycerol, 0.5% BSA and 0.02% sodium azide.
Source	Polyclonal, Rabbit,IgG
Purification	The antibody was affinity-purified from rabbit antiserum by affinity-chromatography using epitope-specific immunogen.
Dilution	WB: 1/500 - 1/2000. IHC-p: 1:100-300 ELISA: 1/40000.. IF 1:50-200
Concentration	1 mg/ml
Purity	≥90%
Storage Stability	-20°C/1 year
Synonyms	RHCG; C15orf6; CDRC2; PDRC2; RHGK; Ammonium transporter Rh type C; Rh glycoprotein kidney; Rhesus blood group family type C glycoprotein; Rh family type C glycoprotein; Rh type C glycoprotein; Tumor-related protein DRC2
Observed Band	53kD
Cell Pathway	Apical cell membrane ; Multi-pass membrane protein . Also detected at the basolateral membrane and in subapical vesicles. .
Tissue Specificity	Expressed in brain, testis, placenta, pancreas, esophagus and prostate. Expressed in squamous epithelial tissues (at protein level). According to PubMed:11062476, specifically expressed in kidney.
Function	developmental stage:Specifically expressed in fetal kidney.,function:Functions as an electroneutral and bidirectional ammonium transporter. May regulate transepithelial ammonia secretion.,PTM:N-glycosylated.,similarity:Belongs to the ammonium transporter (TC 2.A.49) family. Rh subfamily.,subcellular location:Also detected at the basolateral membrane and in subapical vesicles.,tissue specificity:Expressed in brain, testis, placenta, pancreas, esophagus and prostate. Expressed in squamous epithelial tissues (at protein level). Specifically expressed in kidney according to PubMed:11062476.,

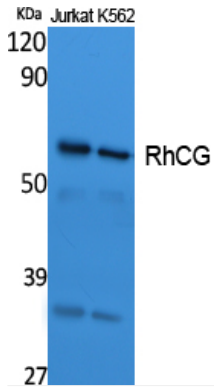
Nanjing BYabscience technology Co.,Ltd



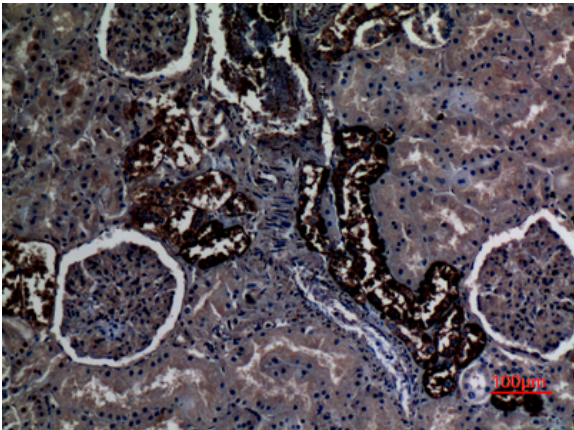
Background	developmental stage:Specifically expressed in fetal kidney.,function:Functions as an electroneutral and bidirectional ammonium transporter. May regulate transepithelial ammonia secretion.,PTM:N-glycosylated.,similarity:Belongs to the ammonium transporter (TC 2.A.49) family. Rh subfamily.,subcellular location:Also detected at the basolateral membrane and in subapical vesicles.,tissue specificity:Expressed in brain, testis, placenta, pancreas, esophagus and prostate. Expressed in squamous epithelial tissues (at protein level). Specifically expressed in kidney according to PubMed:11062476.,
matters needing attention	Avoid repeated freezing and thawing!
Usage suggestions	This product can be used in immunological reaction related experiments. For more information, please consult technical personnel.



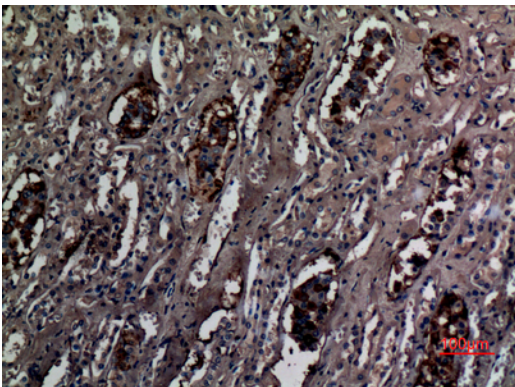
Products Images



Western Blot analysis of extracts from Jurkat, K562 cells, using RhCG Polyclonal Antibody. Secondary antibody(catalog#:RS0002) was diluted at 1:20000



Immunohistochemical analysis of paraffin-embedded human-kidney, antibody was diluted at 1:100



Immunohistochemical analysis of paraffin-embedded human-kidney, antibody was diluted at 1:100