



SLP-76 Polyclonal Antibody

Catalog No	BYab-13972
Isotype	IgG
Reactivity	Human;Mouse;Rat
Applications	WB;IHC;IF;ELISA
Gene Name	LCP2
Protein Name	Lymphocyte cytosolic protein 2
Immunogen	Synthesized peptide derived from SLP-76 . at AA range: 270-350
Specificity	SLP-76 Polyclonal Antibody detects endogenous levels of SLP-76 protein.
Formulation	Liquid in PBS containing 50% glycerol, 0.5% BSA and 0.02% sodium azide.
Source	Polyclonal, Rabbit,IgG
Purification	The antibody was affinity-purified from rabbit antiserum by affinity-chromatography using epitope-specific immunogen.
Dilution	WB: 1/500 - 1/2000. IHC-p: 1:100-300 ELISA: 1/10000.. IF 1:50-200
Concentration	1 mg/ml
Purity	≥90%
Storage Stability	-20°C/1 year
Synonyms	LCP2; Lymphocyte cytosolic protein 2; SH2 domain-containing leukocyte protein of 76 kDa; SLP-76 tyrosine phosphoprotein; SLP76
Observed Band	60kD
Cell Pathway	Cytoplasm .
Tissue Specificity	Highly expressed in spleen, thymus and peripheral blood leukocytes. Highly expressed also in T-cell and monocytic cell lines, expressed at lower level in B-cell lines. Not detected in fibroblast or neuroblastoma cell lines.
Function	domain:The SH2 domain mediates interaction with SHB.,function:Involved in T-cell antigen receptor mediated signaling.,PTM:Phosphorylated after T-cell receptor activation by ZAP-70.,similarity:Contains 1 SAM (sterile alpha motif) domain.,similarity:Contains 1 SH2 domain.,subunit:Interacts with SLA. Interacts with CBLB (By similarity). Interacts with the adapter proteins GRB2 and FYB. Interacts with SHB. Interacts with PRAM1.,tissue specificity:Highly expressed in spleen, thymus, and peripheral blood leukocytes. Highly expressed also in T-cell and monocytic cell lines, expressed at lower level in B-cell lines. Not detected in fibroblast or neuroblasatoma cell lines.,

Nanjing BYabscience technology Co.,Ltd



Background

SLP-76 was originally identified as a substrate of the ZAP-70 protein tyrosine kinase following T cell receptor (TCR) ligation in the leukemic T cell line Jurkat. The SLP-76 locus has been localized to human chromosome 5q33 and the gene structure has been partially characterized in mice. The human and murine cDNAs both encode 533 amino acid proteins that are 72% identical and comprised of three modular domains. The NH₂-terminus contains an acidic region that includes a PEST domain and several tyrosine residues which are phosphorylated following TCR ligation. SLP-76 also contains a central proline-rich domain and a COOH-terminal SH2 domain. A number of additional proteins have been identified that associate with SLP-76 both constitutively and inducibly following receptor ligation, supporting the notion that SLP-76 functions as an adaptor or scaffold protein. Studies using SLP-76 deficient T c

matters needing attention

Avoid repeated freezing and thawing!

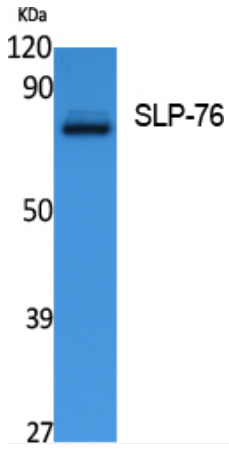
Usage suggestions

This product can be used in immunological reaction related experiments. For more information, please consult technical personnel.

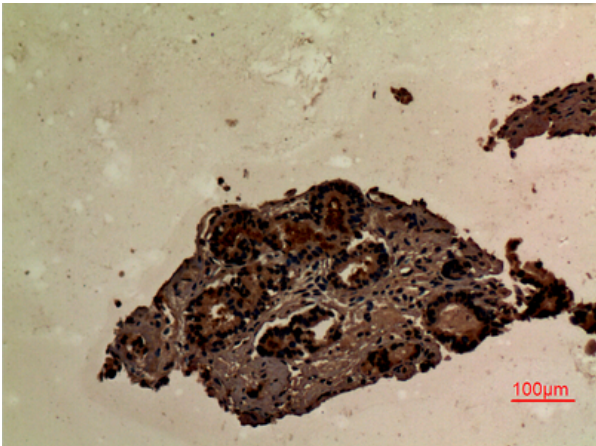
Nanjing BYabscience technology Co.,Ltd



Products Images



Western Blot analysis of extracts from Jurkat cells, using SLP-76 Polyclonal Antibody. Secondary antibody(catalog#:RS0002) was diluted at 1:20000



Immunohistochemical analysis of paraffin-embedded human-prostate-cancer, antibody was diluted at 1:100