



A1BG Polyclonal Antibody

Catalog No	BYab-13971
Isotype	IgG
Reactivity	Human;Rat;Mouse;
Applications	WB;IHC;IF;ELISA
Gene Name	A1BG
Protein Name	Alpha-1B-glycoprotein
Immunogen	Synthesized peptide derived from A1BG . at AA range: 100-180
Specificity	A1BG Polyclonal Antibody detects endogenous levels of A1BG protein.
Formulation	Liquid in PBS containing 50% glycerol, 0.5% BSA and 0.02% sodium azide.
Source	Polyclonal, Rabbit,IgG
Purification	The antibody was affinity-purified from rabbit antiserum by affinity-chromatography using epitope-specific immunogen.
Dilution	WB: 1/500 - 1/2000. IHC-p: 1:100-300 ELISA: 1/40000.. IF 1:50-200
Concentration	1 mg/ml
Purity	≥90%
Storage Stability	-20°C/1 year
Synonyms	A1BG; Alpha-1B-glycoprotein; Alpha-1-B glycoprotein
Observed Band	28kD
Cell Pathway	Secreted.
Tissue Specificity	Plasma.
Function	online information:The Singapore human mutation and polymorphism database,similarity:Contains 5 Ig-like V-type (immunoglobulin-like) domains.,tissue specificity:Plasma.,
Background	The protein encoded by this gene is a plasma glycoprotein of unknown function. The protein shows sequence similarity to the variable regions of some immunoglobulin supergene family member proteins. [provided by RefSeq, Jul 2008],
matters needing attention	Avoid repeated freezing and thawing!

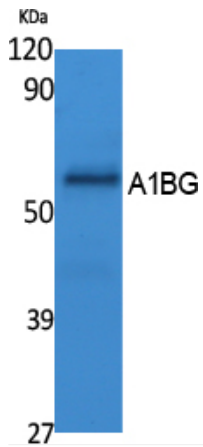
Nanjing BYabscience technology Co.,Ltd



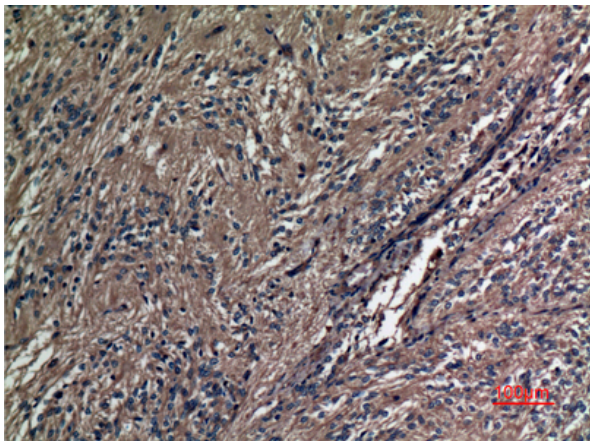
Usage suggestions

This product can be used in immunological reaction related experiments. For more information, please consult technical personnel.

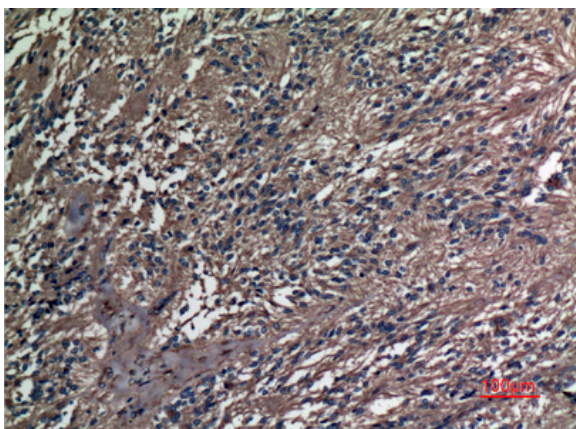
Products Images



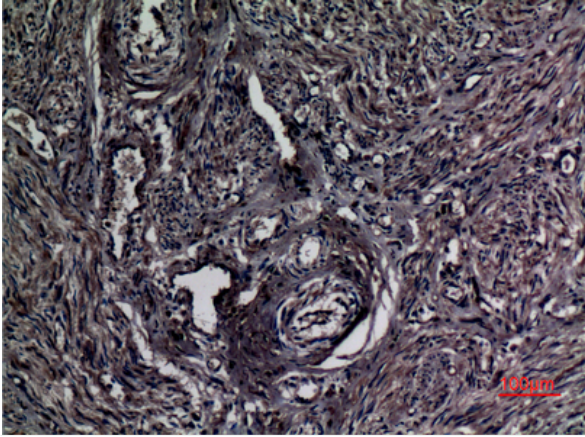
Western blot analysis of extracts from K562 cells, using A1BG Polyclonal Antibody. Secondary antibody(catalog#:RS0002) was diluted at 1:20000



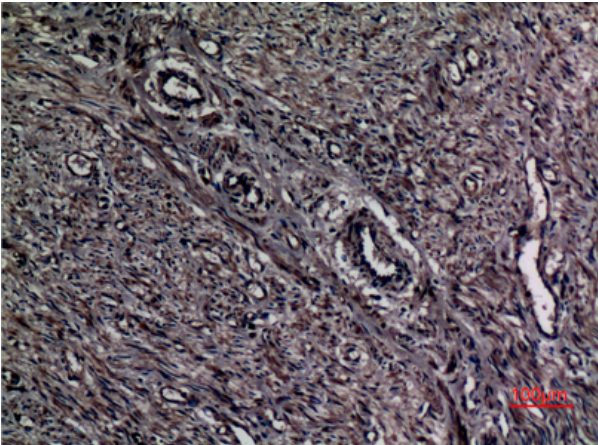
Immunohistochemical analysis of paraffin-embedded human-ovary, antibody was diluted at 1:100



Immunohistochemical analysis of paraffin-embedded human-ovary, antibody was diluted at 1:100



Immunohistochemical analysis of paraffin-embedded human-uterus, antibody was diluted at 1:100



Immunohistochemical analysis of paraffin-embedded human-uterus, antibody was diluted at 1:100