



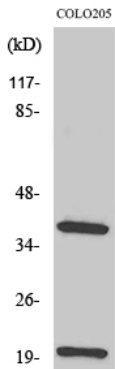
# TCR $\beta$ Polyclonal Antibody

<b>Catalog No</b>	BYab-13964
<b>Isotype</b>	IgG
<b>Reactivity</b>	Human;Rat;Mouse;
<b>Applications</b>	WB;ELISA
<b>Gene Name</b>	TRBC1
<b>Protein Name</b>	T-cell receptor beta-1 chain C region
<b>Immunogen</b>	The antiserum was produced against synthesized peptide derived from human TCR beta. AA range:66-115
<b>Specificity</b>	TCR $\beta$ Polyclonal Antibody detects endogenous levels of TCR $\beta$ protein.
<b>Formulation</b>	Liquid in PBS containing 50% glycerol, 0.5% BSA and 0.02% sodium azide.
<b>Source</b>	Polyclonal, Rabbit,IgG
<b>Purification</b>	The antibody was affinity-purified from rabbit antiserum by affinity-chromatography using epitope-specific immunogen.
<b>Dilution</b>	Western Blot: 1/500 - 1/2000. ELISA: 1/10000. Not yet tested in other applications.
<b>Concentration</b>	1 mg/ml
<b>Purity</b>	$\geq 90\%$
<b>Storage Stability</b>	-20°C/1 year
<b>Synonyms</b>	TRBC1; T-cell receptor beta-1 chain C region
<b>Observed Band</b>	20kD
<b>Cell Pathway</b>	Cell membrane .
<b>Tissue Specificity</b>	Lymph node: intermediate region,
<b>Function</b>	similarity:Contains 1 Ig-like (immunoglobulin-like) domain.,
<b>Background</b>	similarity:Contains 1 Ig-like (immunoglobulin-like) domain.,
<b>matters needing attention</b>	Avoid repeated freezing and thawing!
<b>Usage suggestions</b>	This product can be used in immunological reaction related experiments. For more information, please consult technical personnel.

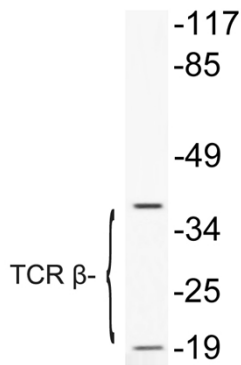
**Nanjing BYabscience technology Co.,Ltd**



## Products Images



Western Blot analysis of various cells using TCR  $\beta$  Polyclonal Antibody



Western blot analysis of lysate from COLO205 cells treated with Forskolin, using TCR  $\beta$  antibody.