



# SPINK6 Polyclonal Antibody

<b>Catalog No</b>	BYab-13963
<b>Isotype</b>	IgG
<b>Reactivity</b>	Human;Rat;Mouse;
<b>Applications</b>	IHC;IF;ELISA
<b>Gene Name</b>	SPINK6
<b>Protein Name</b>	Serine protease inhibitor Kazal-type 6
<b>Immunogen</b>	The antiserum was produced against synthesized peptide derived from human SPINK6. AA range:13-62
<b>Specificity</b>	SPINK6 Polyclonal Antibody detects endogenous levels of SPINK6 protein.
<b>Formulation</b>	Liquid in PBS containing 50% glycerol, 0.5% BSA and 0.02% sodium azide.
<b>Source</b>	Polyclonal, Rabbit,IgG
<b>Purification</b>	The antibody was affinity-purified from rabbit antiserum by affinity-chromatography using epitope-specific immunogen.
<b>Dilution</b>	IHC: 1/100 - 1/300. ELISA: 1/40000.. IF 1:50-200
<b>Concentration</b>	1 mg/ml
<b>Purity</b>	≥90%
<b>Storage Stability</b>	-20°C/1 year
<b>Synonyms</b>	SPINK6; Serine protease inhibitor Kazal-type 6; Kallikrein inhibitor
<b>Observed Band</b>	
<b>Cell Pathway</b>	Secreted .
<b>Tissue Specificity</b>	Skin,
<b>Function</b>	function:Probable serine protease inhibitor.,similarity:Contains 1 Kazal-like domain.,
<b>Background</b>	The protein encoded by this gene is a Kazal-type serine protease inhibitor that acts on kallikrein-related peptidases in the skin. Two transcript variants the same protein have been found for this gene. [provided by RefSeq, Aug 2010],
<b>matters needing attention</b>	Avoid repeated freezing and thawing!

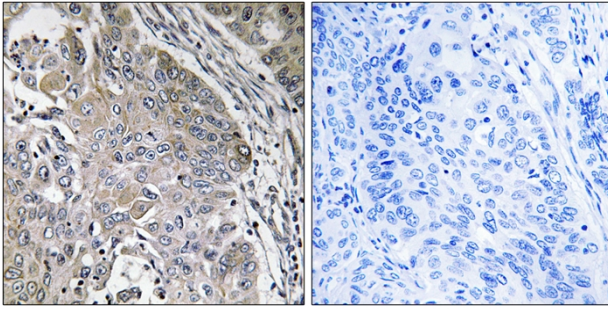
Nanjing BYabscience technology Co.,Ltd



### Usage suggestions

This product can be used in immunological reaction related experiments. For more information, please consult technical personnel.

## Products Images



Immunohistochemistry analysis of paraffin-embedded human lung carcinoma, using SPINK6 Antibody. The picture on the right is blocked with the synthesized peptide.