



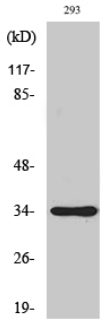
SH2D5 Polyclonal Antibody

Catalog No	BYab-13961
Isotype	IgG
Reactivity	Human;Mouse;Rat
Applications	WB;ELISA;IHC
Gene Name	SH2D5
Protein Name	SH2 domain-containing protein 5
Immunogen	The antiserum was produced against synthesized peptide derived from human SH2D5. AA range:281-330
Specificity	SH2D5 Polyclonal Antibody detects endogenous levels of SH2D5 protein.
Formulation	Liquid in PBS containing 50% glycerol, 0.5% BSA and 0.02% sodium azide.
Source	Polyclonal, Rabbit,IgG
Purification	The antibody was affinity-purified from rabbit antiserum by affinity-chromatography using epitope-specific immunogen.
Dilution	WB 1:500-2000;IHC-p 1:50-300; ELISA 2000-20000
Concentration	1 mg/ml
Purity	≥90%
Storage Stability	-20°C/1 year
Synonyms	SH2D5; SH2 domain-containing protein 5
Observed Band	35kD
Cell Pathway	Cell junction, synapse, postsynaptic density .
Tissue Specificity	Hippocampus,Thalamus,
Function	similarity:Contains 1 SH2 domain.,
Background	similarity:Contains 1 SH2 domain.,
matters needing attention	Avoid repeated freezing and thawing!
Usage suggestions	This product can be used in immunological reaction related experiments. For more information, please consult technical personnel.

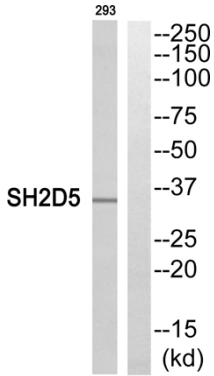
Nanjing BYabscience technology Co.,Ltd



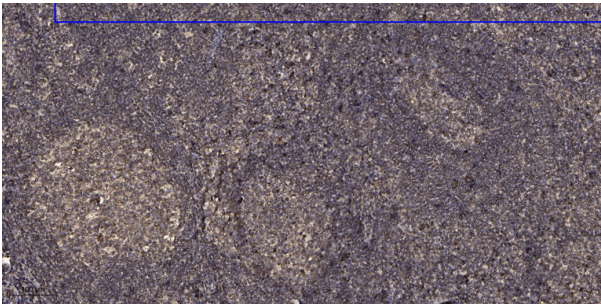
Products Images



Western Blot analysis of various cells using SH2D5 Polyclonal Antibody



Western blot analysis of SH2D5 Antibody. The lane on the right is blocked with the SH2D5 peptide.



Immunohistochemical analysis of paraffin-embedded human tonsil. 1, Antibody was diluted at 1:200(4° overnight). 2, Tris-EDTA,pH9.0 was used for antigen retrieval. 3,Secondary antibody was diluted at 1:200(room temperature, 45min).