



SH2D4A Polyclonal Antibody

Catalog No	BYab-13960
Isotype	IgG
Reactivity	Human;Rat;Mouse;
Applications	IHC;IF;ELISA
Gene Name	SH2D4A
Protein Name	SH2 domain-containing protein 4A
Immunogen	The antiserum was produced against synthesized peptide derived from human SH2D4A. AA range:180-220
Specificity	SH2D4A Polyclonal Antibody detects endogenous levels of SH2D4A protein.
Formulation	Liquid in PBS containing 50% glycerol, 0.5% BSA and 0.02% sodium azide.
Source	Polyclonal, Rabbit,IgG
Purification	The antibody was affinity-purified from rabbit antiserum by affinity-chromatography using epitope-specific immunogen.
Dilution	IHC: 1/100 - 1/300. ELISA: 1/20000.. IF 1:50-200
Concentration	1 mg/ml
Purity	≥90%
Storage Stability	-20°C/1 year
Synonyms	SH2D4A; SH2A; SH2 domain-containing protein 4A; Protein SH(2)A
Observed Band	
Cell Pathway	Cytoplasm . Located at podocyte foot processes. .
Tissue Specificity	Ubiquitously expressed. Aberrantly expressed in some cancers.
Function	sequence caution:Translated as stop.,sequence caution:Translation N-terminally extended.,similarity:Contains 1 SH2 domain.,tissue specificity:Ubiquitously expressed. Aberrantly expressed in some cancers.,
Background	sequence caution:Translated as stop.,sequence caution:Translation N-terminally extended.,similarity:Contains 1 SH2 domain.,tissue specificity:Ubiquitously expressed. Aberrantly expressed in some cancers.,
matters needing attention	Avoid repeated freezing and thawing!

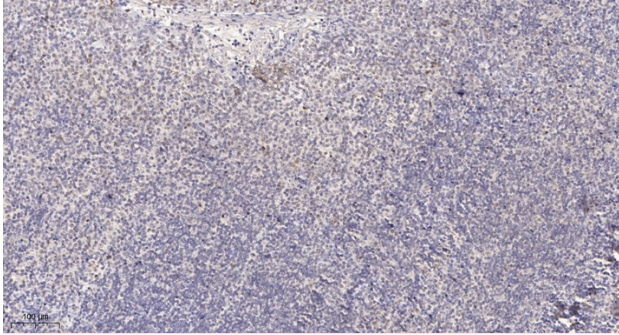
Nanjing BYabscience technology Co.,Ltd



Usage suggestions

This product can be used in immunological reaction related experiments. For more information, please consult technical personnel.

Products Images



Immunohistochemical analysis of paraffin-embedded human tonsil. 1, Antibody was diluted at 1:200(4° overnight). 2, Tris-EDTA,pH9.0 was used for antigen retrieval. 3,Secondary antibody was diluted at 1:200(room temperature, 30min).