



PLUNC Polyclonal Antibody

Catalog No	BYab-13957
Isotype	IgG
Reactivity	Human;Rat;Mouse;
Applications	IHC;IF;ELISA
Gene Name	BPIFA1
Protein Name	BPI fold-containing family A member 1
Immunogen	Synthesized peptide derived from the Internal region of human PLUNC.
Specificity	PLUNC Polyclonal Antibody detects endogenous levels of PLUNC protein.
Formulation	Liquid in PBS containing 50% glycerol, 0.5% BSA and 0.02% sodium azide.
Source	Polyclonal, Rabbit,IgG
Purification	The antibody was affinity-purified from rabbit antiserum by affinity-chromatography using epitope-specific immunogen.
Dilution	WB 1:500-2000 ,IHC: 1/100 - 1/300. ELISA: 1/40000.. IF 1:50-200
Concentration	1 mg/ml
Purity	≥90%
Storage Stability	-20°C/1 year
Synonyms	BPIFA1; LUNX; NASG; PLUNC; SPURT; BPI fold-containing family A member 1; Lung-specific protein X; Nasopharyngeal carcinoma-related protein; Palate lung and nasal epithelium clone protein; Secretory protein in upper respiratory tracts; Trach
Observed Band	
Cell Pathway	Secreted . Apical side of airway epithelial cells. Detected in airway surface liquid, nasal mucus and sputum.
Tissue Specificity	Highly expressed in lung, upper airways and nasopharyngeal regions, including trachea and nasal epithelium (at protein level) (PubMed:11018263, PubMed:11251963, PubMed:12409287, PubMed:11425234, PubMed:26559477). Specifically expressed in the secretory ducts and submucosal glands of tracheobronchial tissues (at protein level) (PubMed:12409287, PubMed:11425234). Also expressed in the eye where it is detected in lacrimal gland, eyelid, conjunctiva and cornea (at protein level) (PubMed:26559477). Specifically localizes to epithelial cell layers in cornea, eyelid (basal epithelium) and conjunctiva (at protein level) (PubMed:26559477). Detected within acinar cells and ducts in the lacrimal and Meibomian glands (at protein level)

Nanjing BYabscience technology Co.,Ltd



(PubMed:26559477). In lung, shows highest expression in the trache

Function

function:May be involved in the airway inflammatory response after exposure to irritants. May be associated with tumor progression. May play a role in innate immune responses of the upper airways.,induction:By all-trans retinoic acid (ATRA).,miscellaneous:Binds lipopolysaccharides.,PTM:May be N-glycosylated.,similarity:Belongs to the BPI/LBP/Plunc superfamily. Plunc family.,subcellular location:Found in the nasal mucus (By similarity). Apical side of airway epithelial cells. Detected in nasal mucus.,tissue specificity:Lung, upper airways and nasopharyngeal regions, including trachea and nasal epithelium. Specifically expressed in the secretory ducts and submucosal glands of tracheobronchial tissues. Highest expression in the trachea and progressive decrease from proximal (bronchial) to distal (bronchiolar) airways. Also expressed in lung cancers and some other types of cancer.,

Background

This gene is the human homolog of murine plunc, and like the mouse gene, is specifically expressed in the upper airways and nasopharyngeal regions. The encoded antimicrobial protein displays antibacterial activity against Gram-negative bacteria. It is thought to be involved in inflammatory responses to irritants in the upper airways and may also serve as a potential molecular marker for detection of micrometastasis in non-small-cell lung cancer. Multiple transcript variants resulting from alternative splicing in the 3' UTR have been detected, but the full-length nature of only three are known. [provided by RefSeq, Aug 2014],

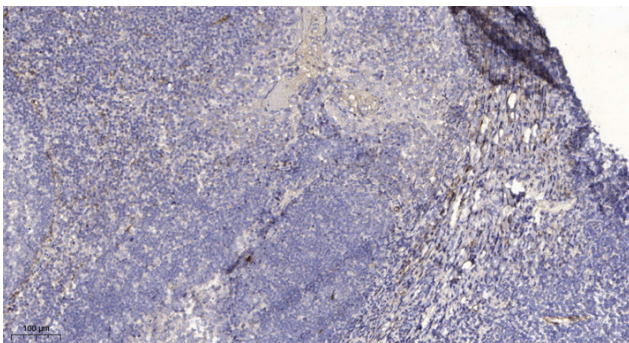
matters needing attention

Avoid repeated freezing and thawing!

Usage suggestions

This product can be used in immunological reaction related experiments. For more information, please consult technical personnel.

Products Images



Immunohistochemical analysis of paraffin-embedded human tonsil. 1, Antibody was diluted at 1:200(4° overnight). 2, Tris-EDTA,pH9.0 was used for antigen retrieval. 3,Secondary antibody was diluted at 1:200(room temperature, 30min).