



# NKp46 Polyclonal Antibody

<b>Catalog No</b>	BYab-13952
<b>Isotype</b>	IgG
<b>Reactivity</b>	Human;Rat;Mouse;
<b>Applications</b>	WB;ELISA
<b>Gene Name</b>	NCR1
<b>Protein Name</b>	Natural cytotoxicity triggering receptor 1
<b>Immunogen</b>	The antiserum was produced against synthesized peptide derived from human NCR1. AA range:145-194
<b>Specificity</b>	NKp46 Polyclonal Antibody detects endogenous levels of NKp46 protein.
<b>Formulation</b>	Liquid in PBS containing 50% glycerol, 0.5% BSA and 0.02% sodium azide.
<b>Source</b>	Polyclonal, Rabbit,IgG
<b>Purification</b>	The antibody was affinity-purified from rabbit antiserum by affinity-chromatography using epitope-specific immunogen.
<b>Dilution</b>	Western Blot: 1/500 - 1/2000. ELISA: 1/10000. Not yet tested in other applications.
<b>Concentration</b>	1 mg/ml
<b>Purity</b>	≥90%
<b>Storage Stability</b>	-20°C/1 year
<b>Synonyms</b>	NCR1; LY94; Natural cytotoxicity triggering receptor 1; Lymphocyte antigen 94 homolog; NK cell-activating receptor; Natural killer cell p46-related protein; NK-p46; NKp46; hNKp46; CD antigen CD335
<b>Observed Band</b>	40kD
<b>Cell Pathway</b>	Cell membrane ; Single-pass type I membrane protein .
<b>Tissue Specificity</b>	Selectively expressed by both resting and activated NK cells.
<b>Function</b>	function:Cytotoxicity-activating receptor that may contribute to the increased efficiency of activated natural killer (NK) cells to mediate tumor cell lysis.,PTM:N-glycosylated.,PTM:O-glycosylated.,similarity:Belongs to the natural cytotoxicity receptor (NCR) family.,similarity:Contains 2 Ig-like (immunoglobulin-like) domains.,subunit:Interacts with CD3Z and FCER1G.,tissue specificity:Selectively expressed by both resting and activated NK cells.,
<b>Background</b>	function:Cytotoxicity-activating receptor that may contribute to the increased efficiency of activated natural killer (NK) cells to mediate tumor cell

Nanjing BYabscience technology Co.,Ltd



lysis.,PTM:N-glycosylated.,PTM:O-glycosylated.,similarity:Belongs to the natural cytotoxicity receptor (NCR) family.,similarity:Contains 2 Ig-like (immunoglobulin-like) domains.,subunit:Interacts with CD3Z and FCER1G.,tissue specificity:Selectively expressed by both resting and activated NK cells.,

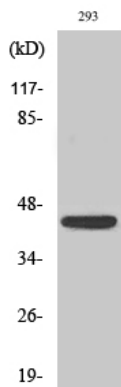
**matters needing attention**

Avoid repeated freezing and thawing!

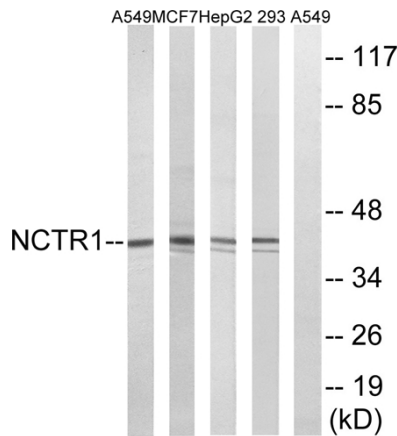
**Usage suggestions**

This product can be used in immunological reaction related experiments. For more information, please consult technical personnel.

**Products Images**



Western Blot analysis of various cells using NKp46 Polyclonal Antibody cells nucleus extracted by Minute TM Cytoplasmic and Nuclear Fractionation kit (SC-003, Inventbiotech, MN, USA).



Western blot analysis of lysates from 293, HepG2, MCF-7, and A549 cells, using NCR1 Antibody. The lane on the right is blocked with the synthesized peptide.