



LEKTI Polyclonal Antibody

Catalog No	BYab-13941
Isotype	IgG
Reactivity	Human;Rat;Mouse;
Applications	WB;IHC;IF;ELISA
Gene Name	SPINK5
Protein Name	Serine protease inhibitor Kazal-type 5
Immunogen	The antiserum was produced against synthesized peptide derived from human SPINK5. AA range:494-543
Specificity	LEKTI Polyclonal Antibody detects endogenous levels of LEKTI protein.
Formulation	Liquid in PBS containing 50% glycerol, 0.5% BSA and 0.02% sodium azide.
Source	Polyclonal, Rabbit,IgG
Purification	The antibody was affinity-purified from rabbit antiserum by affinity-chromatography using epitope-specific immunogen.
Dilution	WB: 1/500 - 1/2000. IHC: 1/100 - 1/300. ELISA: 1/20000.. IF 1:50-200
Concentration	1 mg/ml
Purity	≥90%
Storage Stability	-20°C/1 year
Synonyms	SPINK5; Serine protease inhibitor Kazal-type 5; Lympho-epithelial Kazal-type-related inhibitor; LEKTI
Observed Band	120kD
Cell Pathway	Secreted.
Tissue Specificity	Highly expressed in the thymus and stratum corneum. Also found in the oral mucosa, parathyroid gland, Bartholin's glands, tonsils, and vaginal epithelium. Very low levels are detected in lung, kidney, and prostate.
Function	disease:Defects in SPINK5 are the cause of Netherton syndrome (NETH) [MIM:256500]. NETH is an autosomal recessive congenital ichthyosis associated with hair shaft abnormalities and anomalies of the immune system. Typical features are ichthyosis linearis circumflexa, ichthyosiform erythroderma, trichorrhexis invaginata (bamboo hair), atopic dermatitis, and hayfever. High postnatal mortality is due to failure to thrive, infections and hypernatremic dehydration.,domain:Contains at least one active inhibitory domain for trypsin (domain 6).,function:Serine protease inhibitor, probably important for the anti-inflammatory and/or antimicrobial protection of mucous epithelia.,online

Nanjing BYabscience technology Co.,Ltd



information:SPINK5 mutation db,similarity:Contains 15 Kazal-like domains.,tissue specificity:Highly expressed in the thymus. Also found in the oral mucosa, parathyroid gland, Bartholin's glands, tonsils, and vaginal e

Background

This gene encodes a multidomain serine protease inhibitor that contains 15 potential inhibitory domains. The encoded preproprotein is proteolytically processed to generate multiple protein products, which may exhibit unique activities and specificities. These proteins may play a role in skin and hair morphogenesis, as well as anti-inflammatory and antimicrobial protection of mucous epithelia. Mutations in this gene may result in Netherton syndrome, a disorder characterized by ichthyosis, defective cornification, and atopy. This gene is present in a gene cluster on chromosome 5. Alternative splicing results in multiple transcript variants. [provided by RefSeq, Oct 2015],

matters needing attention

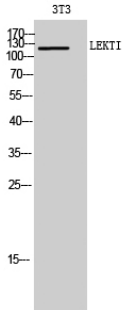
Avoid repeated freezing and thawing!

Usage suggestions

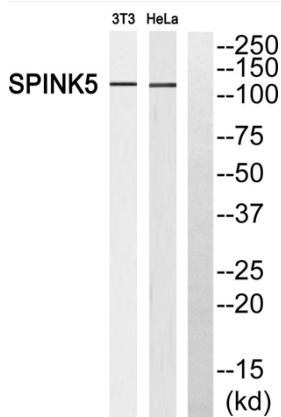
This product can be used in immunological reaction related experiments. For more information, please consult technical personnel.



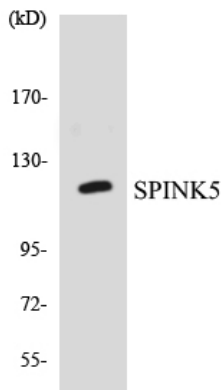
Products Images



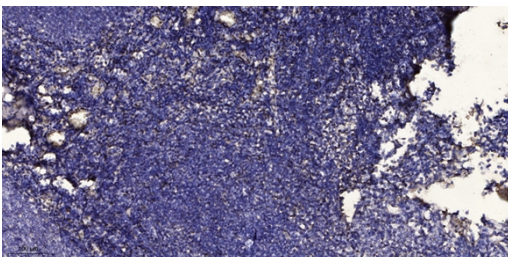
Western Blot analysis of 3T3 cells using LEKTI Polyclonal Antibody



Western blot analysis of SPINK5 Antibody. The lane on the right is blocked with the SPINK5 peptide.



Western blot analysis of the lysates from COLO205 cells using SPINK5 antibody.



Immunohistochemical analysis of paraffin-embedded human tonsil. 1, Antibody was diluted at 1:200(4° overnight). 2, Tris-EDTA,pH9.0 was used for antigen retrieval. 3,Secondary antibody was diluted at 1:200(room temperature, 30min).