



# IgA Polyclonal Antibody

<b>Catalog No</b>	BYab-13933
<b>Isotype</b>	IgG
<b>Reactivity</b>	Human;Rat;Mouse;
<b>Applications</b>	WB;IHC;IF;ELISA
<b>Gene Name</b>	IGHA1/IGHA2
<b>Protein Name</b>	Ig alpha-1 chain C region/Ig alpha-2 chain C region
<b>Immunogen</b>	The antiserum was produced against synthesized peptide derived from human IgA. AA range:227-276
<b>Specificity</b>	IgA Polyclonal Antibody detects endogenous levels of IgA protein.
<b>Formulation</b>	Liquid in PBS containing 50% glycerol, 0.5% BSA and 0.02% sodium azide.
<b>Source</b>	Polyclonal, Rabbit,IgG
<b>Purification</b>	The antibody was affinity-purified from rabbit antiserum by affinity-chromatography using epitope-specific immunogen.
<b>Dilution</b>	WB: 1/500 - 1/2000. IHC: 1/100 - 1/300. ELISA: 1/40000.. IF 1:50-200
<b>Concentration</b>	1 mg/ml
<b>Purity</b>	≥90%
<b>Storage Stability</b>	-20°C/1 year
<b>Synonyms</b>	IGHA1; Ig alpha-1 chain C region; IGH A2; Ig alpha-2 chain C region
<b>Observed Band</b>	38kD
<b>Cell Pathway</b>	Secreted . Cell membrane .
<b>Tissue Specificity</b>	Bile,Colon,Mammary gland,Stomach mucosa,
<b>Function</b>	disease:A chromosomal aberration involving IGH A1 is found in multiple myeloma (MM) cell lines. Translocation t(1;14)(q21;q32) that forms a FCRL4-IGH A1 fusion protein.,function:Ig alpha is the major immunoglobulin class in body secretions. It may serve both to defend against local infection and to prevent access of foreign antigens to the general immunologic system.,PTM:3-Hydroxykynurenine, an oxidized tryptophan metabolite that is common in biological fluids, reacts with alpha-1-microglobulin to form heterogeneous polycyclic chromophores including hydroxanthommatin. The chromophore reacts with accessible cysteines forming non-reducible thioether cross-links with Ig alpha-1 chain C region Cys-352.,similarity:Contains 3 Ig-like (immunoglobulin-like) domains.,subunit:Monomeric or polymeric.,

Nanjing BYabscience technology Co.,Ltd



**Background**

disease:A chromosomal aberration involving IGHA1 is found in multiple myeloma (MM) cell lines. Translocation t(1;14)(q21;q32) that forms a FCRL4-IGHA1 fusion protein.,function:Ig alpha is the major immunoglobulin class in body secretions. It may serve both to defend against local infection and to prevent access of foreign antigens to the general immunologic system.,PTM:3-Hydroxykynurenine, an oxidized tryptophan metabolite that is common in biological fluids, reacts with alpha-1-microglobulin to form heterogeneous polycyclic chromophores including hydroxanthommatin. The chromophore reacts with accessible cysteines forming non-reducible thioether cross-links with Ig alpha-1 chain C region Cys-352.,similarity:Contains 3 Ig-like (immunoglobulin-like) domains.,subunit:Monomeric or polymeric.,

**matters needing attention**

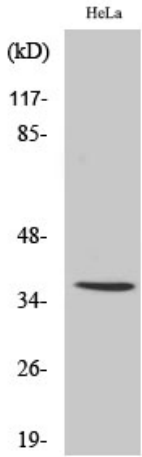
Avoid repeated freezing and thawing!

**Usage suggestions**

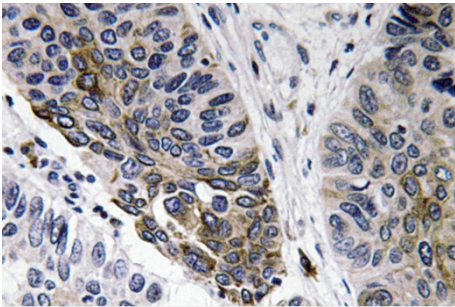
This product can be used in immunological reaction related experiments. For more information, please consult technical personnel.



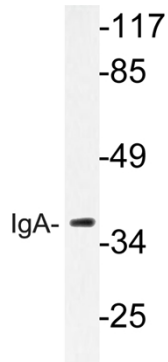
## Products Images



Western Blot analysis of various cells using IgA Polyclonal Antibody



Immunohistochemistry analysis of IgA antibody in paraffin-embedded human lung carcinoma tissue.



Western blot analysis of lysate from HeLa cells, using IgA antibody.