



# HLA-H Polyclonal Antibody

|                           |   |
|---------------------------|---|
| <b>Catalog No</b>         | BYab-13932  |
| <b>Isotype</b>            | IgG   |
| <b>Reactivity</b>         | Human   |
| <b>Applications</b>       | WB;ELISA  |
| <b>Gene Name</b>          | HLA-H   |
| <b>Protein Name</b>       | Putative HLA class I histocompatibility antigen alpha chain H   |
| <b>Immunogen</b>          | The antiserum was produced against synthesized peptide derived from human HLAH. AA range:71-120   |
| <b>Specificity</b>        | HLA-H Polyclonal Antibody detects endogenous levels of HLA-H protein.   |
| <b>Formulation</b>        | Liquid in PBS containing 50% glycerol, 0.5% BSA and 0.02% sodium azide.   |
| <b>Source</b>             | Polyclonal, Rabbit,IgG  |
| <b>Purification</b>       | The antibody was affinity-purified from rabbit antiserum by affinity-chromatography using epitope-specific immunogen.   |
| <b>Dilution</b>           | Western Blot: 1/500 - 1/2000. ELISA: 1/10000. Not yet tested in other applications.   |
| <b>Concentration</b>      | 1 mg/ml   |
| <b>Purity</b>             | ≥90%  |
| <b>Storage Stability</b>  | -20°C/1 year  |
| <b>Synonyms</b>           | HLA-H; HLAH; Putative HLA class I histocompatibility antigen; alpha chain H; HLA-12.4; HLA-AR; MHC class I antigen H  |
| <b>Observed Band</b>      | 40kD  |
| <b>Cell Pathway</b>       | Cell membrane ; Single-pass membrane protein .  |
| <b>Tissue Specificity</b> | Platelet,   |
| <b>Function</b>           | caution:Could be the product of a pseudogene.,function:Involved in the presentation of foreign antigens to the immune system.,similarity:Belongs to the MHC class I family.,similarity:Contains 1 Ig-like C1-type (immunoglobulin-like) domain.,subunit:Heterodimer of an alpha chain and a beta chain (beta-2-microglobulin)., |
| <b>Background</b>         | This major histocompatibility complex gene represents a transcribed pseudogene, possibly derived from HLA-A. This gene displays extensive variation. [provided by RefSeq, May 2010],  |

Nanjing BYabscience technology Co.,Ltd



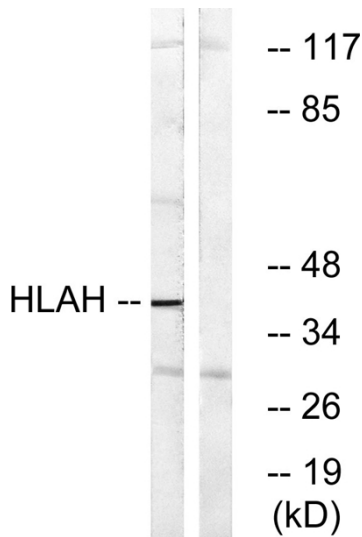
**matters needing attention**

Avoid repeated freezing and thawing!

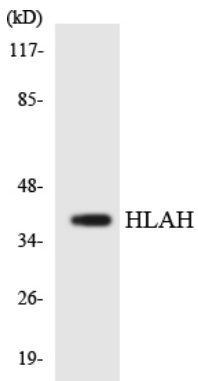
**Usage suggestions**

This product can be used in immunological reaction related experiments. For more information, please consult technical personnel.

## Products Images



Western blot analysis of lysates from LOVO cells, using HLAH Antibody. The lane on the right is blocked with the synthesized peptide.



Western blot analysis of the lysates from HT-29 cells using HLAH antibody.