



HLA-DO β Polyclonal Antibody

Catalog No	BYab-13930
Isotype	IgG
Reactivity	Human
Applications	WB;ELISA
Gene Name	HLA-DOB
Protein Name	HLA class II histocompatibility antigen DO beta chain
Immunogen	The antiserum was produced against synthesized peptide derived from human HLA-DOB. AA range:1-50
Specificity	HLA-DO β Polyclonal Antibody detects endogenous levels of HLA-DO β protein.
Formulation	Liquid in PBS containing 50% glycerol, 0.5% BSA and 0.02% sodium azide.
Source	Polyclonal, Rabbit,IgG
Purification	The antibody was affinity-purified from rabbit antiserum by affinity-chromatography using epitope-specific immunogen.
Dilution	Western Blot: 1/500 - 1/2000. ELISA: 1/40000. Not yet tested in other applications.
Concentration	1 mg/ml
Purity	$\geq 90\%$
Storage Stability	-20°C/1 year
Synonyms	HLA-DOB; HLA class II histocompatibility antigen; DO beta chain; MHC class II antigen DOB
Observed Band	30kD
Cell Pathway	Endosome membrane; Single-pass type I membrane protein. Lysosome membrane; Single-pass type I membrane protein. Complexes with HLA-DM molecule during intracellular transport and in endosomal/lysosomal compartments. Heterotetramerization is necessary to exit the ER.
Tissue Specificity	B-cell,
Function	function:Important modulator in the HLA class II restricted antigen presentation pathway by interaction with the HLA-DM molecule.,polymorphism:The following alleles of DOB are known: DOB*0101, DOB*0102, DOB*0103 and DOB*0104. The sequence shown is that of DOB*0101.,similarity:Belongs to the MHC class II family.,similarity:Contains 1 Ig-like C1-type (immunoglobulin-like) domain.,subunit:Heterodimer of an alpha chain (DOA) and a beta chain (DOB),,

Nanjing BYabscience technology Co.,Ltd



Background

HLA-DOB belongs to the HLA class II beta chain paralogues. This class II molecule is a heterodimer consisting of an alpha (DOA) and a beta chain (DOB), both anchored in the membrane. It is located in intracellular vesicles. DO suppresses peptide loading of MHC class II molecules by inhibiting HLA-DM. Class II molecules are expressed in antigen presenting cells (APC: B lymphocytes, dendritic cells, macrophages). The beta chain is approximately 26-28 kDa and its gene contains 6 exons. Exon one encodes the leader peptide, exons 2 and 3 encode the two extracellular domains, exon 4 encodes the transmembrane domain and exon 5 encodes the cytoplasmic tail. [provided by RefSeq, Jul 2008],

matters needing attention

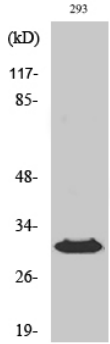
Avoid repeated freezing and thawing!

Usage suggestions

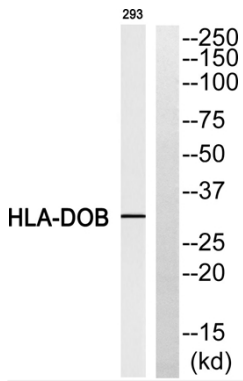
This product can be used in immunological reaction related experiments. For more information, please consult technical personnel.



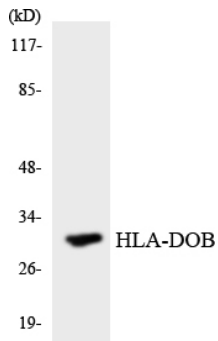
Products Images



Western Blot analysis of various cells using HLA-DO β Polyclonal Antibody diluted at 1:1000



Western blot analysis of HLA-DOB Antibody. The lane on the right is blocked with the HLA-DOB peptide.



Western blot analysis of the lysates from HeLa cells using HLA-DOB antibody.