



EMR3 Polyclonal Antibody

Catalog No	BYab-13922
Isotype	IgG
Reactivity	Human;Rat;Mouse;
Applications	WB;IF;ELISA
Gene Name	EMR3
Protein Name	EGF-like module-containing mucin-like hormone receptor-like 3
Immunogen	The antiserum was produced against synthesized peptide derived from human EMR3. AA range:603-652
Specificity	EMR3 Polyclonal Antibody detects endogenous levels of EMR3 protein.
Formulation	Liquid in PBS containing 50% glycerol, 0.5% BSA and 0.02% sodium azide.
Source	Polyclonal, Rabbit,IgG
Purification	The antibody was affinity-purified from rabbit antiserum by affinity-chromatography using epitope-specific immunogen.
Dilution	Western Blot: 1/500 - 1/2000. Immunofluorescence: 1/200 - 1/1000. ELISA: 1/10000. Not yet tested in other applications.
Concentration	1 mg/ml
Purity	≥90%
Storage Stability	-20°C/1 year
Synonyms	EMR3; EGF-like module-containing mucin-like hormone receptor-like 3; EGF-like module receptor 3
Observed Band	70kD
Cell Pathway	Cell membrane; Multi-pass membrane protein .; [Isoform 3]: Secreted.
Tissue Specificity	Displays a predominantly leukocyte-restricted expression, with highest levels in neutrophils, monocytes and macrophages.
Function	function:Receptor probably involved in myeloid interactions during immune and inflammatory responses. A ligand for the soluble form of this receptor is present at the surface of monocytes-derived macrophages and activated neutrophils.,PTM:Proteolytically cleaved into 2 subunits, an extracellular alpha subunit and a seven-transmembrane subunit.,similarity:Belongs to the G-protein coupled receptor 2 family. LN-TM7 subfamily.,similarity:Contains 1 GPS domain.,similarity:Contains 2 EGF-like domains.,subcellular location:A soluble form is also detected (alpha subunit),subunit:Forms a heterodimer, consisting of a large extracellular region (alpha subunit) non-covalently linked to a seven-transmembrane moiety (beta subunit),tissue specificity:Displays a

Nanjing BYabscience technology Co.,Ltd



predominantly leukocyte-restricted expression, with highest levels in neutrophils, monocytes and macrophages.,

Background

This gene encodes a member of the class B seven-span transmembrane (TM7) receptor family expressed predominantly by cells of the immune system. Family members are characterized by an extended extracellular region with a variable number of N-terminal epidermal growth factor (EGF)-like domains coupled to a TM7 domain via a mucin-like spacer domain. This gene is closely linked to the gene encoding egf-like molecule containing mucin-like hormone receptor 2 on chromosome 19. This protein may play a role in myeloid-myeloid interactions during immune and inflammatory responses. Alternative splicing results in multiple transcript variants encoding different isoforms. [provided by RefSeq, Jan 2014],

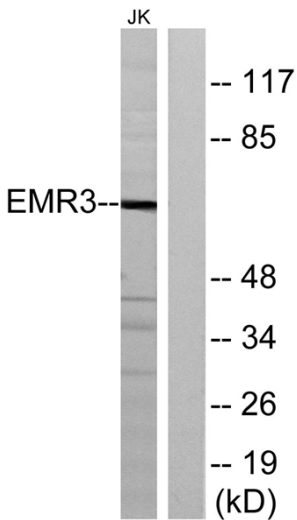
matters needing attention

Avoid repeated freezing and thawing!

Usage suggestions

This product can be used in immunological reaction related experiments. For more information, please consult technical personnel.

Products Images



Western blot analysis of lysates from Jurkat cells, using EMR3 Antibody. The lane on the right is blocked with the synthesized peptide.