



CD90 Polyclonal Antibody

Catalog No	BYab-13916
Isotype	IgG
Reactivity	Human;Rat;Mouse;
Applications	WB;ELISA
Gene Name	THY1
Protein Name	Thy-1 membrane glycoprotein
Immunogen	The antiserum was produced against synthesized peptide derived from human THY1. AA range:51-100
Specificity	CD90 Polyclonal Antibody detects endogenous levels of CD90 protein.
Formulation	Liquid in PBS containing 50% glycerol, 0.5% BSA and 0.02% sodium azide.
Source	Polyclonal, Rabbit,IgG
Purification	The antibody was affinity-purified from rabbit antiserum by affinity-chromatography using epitope-specific immunogen.
Dilution	Western Blot: 1/500 - 1/2000. ELISA: 1/10000. Not yet tested in other applications.
Concentration	1 mg/ml
Purity	≥90%
Storage Stability	-20°C/1 year
Synonyms	THY1; Thy-1 membrane glycoprotein; CDw90; Thy-1 antigen; CD antigen CD90
Observed Band	28kD
Cell Pathway	Cell membrane ; Lipid-anchor, GPI-anchor .
Tissue Specificity	Amygdala,Brain,Eye,Liver,
Function	function:May play a role in cell-cell or cell-ligand interactions during synaptogenesis and other events in the brain.,similarity:Contains 1 Ig-like V-type (immunoglobulin-like) domain.,
Background	This gene encodes a cell surface glycoprotein and member of the immunoglobulin superfamily of proteins. The encoded protein is involved in cell adhesion and cell communication in numerous cell types, but particularly in cells of the immune and nervous systems. The encoded protein is widely used as a marker for hematopoietic stem cells. This gene may function as a tumor suppressor in nasopharyngeal carcinoma. Alternative splicing results in multiple transcript variants. [provided by RefSeq, Jul 2015],

Nanjing BYabscience technology Co.,Ltd



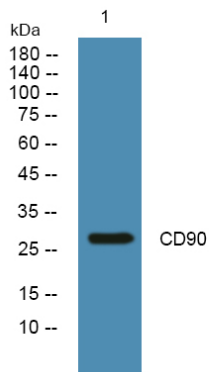
matters needing attention

Avoid repeated freezing and thawing!

Usage suggestions

This product can be used in immunological reaction related experiments. For more information, please consult technical personnel.

Products Images



Western blot analysis of lysates from Jarkat cells, primary antibody was diluted at 1:1000, 4° over night