



CD32-A Polyclonal Antibody

Catalog No	BYab-13897
Isotype	IgG
Reactivity	Human;Rat;Mouse;
Applications	WB;ELISA
Gene Name	FCGR2A
Protein Name	Low affinity immunoglobulin gamma Fc region receptor II-a
Immunogen	The antiserum was produced against synthesized peptide derived from human FCGR2A. AA range:241-290
Specificity	CD32-A Polyclonal Antibody detects endogenous levels of CD32-A protein.
Formulation	Liquid in PBS containing 50% glycerol, 0.5% BSA and 0.02% sodium azide.
Source	Polyclonal, Rabbit,IgG
Purification	The antibody was affinity-purified from rabbit antiserum by affinity-chromatography using epitope-specific immunogen.
Dilution	Western Blot: 1/500 - 1/2000. ELISA: 1/20000. Not yet tested in other applications.
Concentration	1 mg/ml
Purity	≥90%
Storage Stability	-20°C/1 year
Synonyms	FCGR2A; CD32; FCG2; FCGR2A1; IGFR2; Low affinity immunoglobulin gamma Fc region receptor II-a; IgG Fc receptor II-a; CDw32; Fc-gamma RII-a; Fc-gamma-RIIa; FcRII-a; CD antigen CD32
Observed Band	35kD
Cell Pathway	Cell membrane ; Single-pass type I membrane protein .
Tissue Specificity	Found on monocytes, neutrophils and eosinophil platelets.
Function	function: Binds to the Fc region of immunoglobulins gamma. Low affinity receptor. By binding to IgG it initiates cellular responses against pathogens and soluble antigens.,similarity: Contains 2 Ig-like C2-type (immunoglobulin-like) domains.,subunit: Interacts with INPP5D/SHIP1 and INPPL1/SHIP2, regulating its function.,tissue specificity: Found on monocytes, neutrophils and eosinophil platelets.,
Background	Fc fragment of IgG receptor IIa(FCGR2A) Homo sapiens This gene encodes one member of a family of immunoglobulin Fc receptor genes found on the

Nanjing BYabscience technology Co.,Ltd



surface of many immune response cells. The protein encoded by this gene is a cell surface receptor found on phagocytic cells such as macrophages and neutrophils, and is involved in the process of phagocytosis and clearing of immune complexes. Alternative splicing results in multiple transcript variants. [provided by RefSeq, Oct 2008],

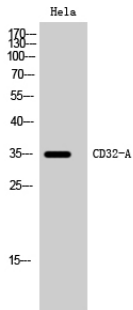
matters needing attention

Avoid repeated freezing and thawing!

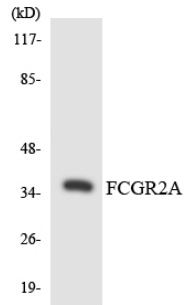
Usage suggestions

This product can be used in immunological reaction related experiments. For more information, please consult technical personnel.

Products Images



Western Blot analysis of HeLa cells using CD32-A Polyclonal Antibody



Western blot analysis of the lysates from 293 cells using FCGR2A antibody.