



# CD2BP2 Polyclonal Antibody

<b>Catalog No</b>	BYab-13891
<b>Isotype</b>	IgG
<b>Reactivity</b>	Human;Monkey
<b>Applications</b>	WB;IHC;IF;ELISA
<b>Gene Name</b>	CD2BP2
<b>Protein Name</b>	CD2 antigen cytoplasmic tail-binding protein 2
<b>Immunogen</b>	The antiserum was produced against synthesized peptide derived from human CD2 Tail-binding. AA range:101-150
<b>Specificity</b>	CD2BP2 Polyclonal Antibody detects endogenous levels of CD2BP2 protein.
<b>Formulation</b>	Liquid in PBS containing 50% glycerol, 0.5% BSA and 0.02% sodium azide.
<b>Source</b>	Polyclonal, Rabbit,IgG
<b>Purification</b>	The antibody was affinity-purified from rabbit antiserum by affinity-chromatography using epitope-specific immunogen.
<b>Dilution</b>	WB: 1/500 - 1/2000. IHC: 1/100 - 1/300. ELISA: 1/40000.. IF 1:50-200
<b>Concentration</b>	1 mg/ml
<b>Purity</b>	≥90%
<b>Storage Stability</b>	-20°C/1 year
<b>Synonyms</b>	CD2BP2; KIAA1178; CD2 antigen cytoplasmic tail-binding protein 2; CD2 cytoplasmic domain-binding protein 2; CD2 tail-binding protein 2
<b>Observed Band</b>	50kD
<b>Cell Pathway</b>	Cytoplasm. Nucleus. Predominantly nuclear.
<b>Tissue Specificity</b>	Aorta,Brain,Epithelium,Liver,Lung,
<b>Function</b>	similarity:Contains 1 GYF domain.,subunit:Binds the cytoplasmic domain of CD2 through the GYF domain.,
<b>Background</b>	This gene encodes a bi-functional protein. In the cytoplasm, the encoded protein binds the cytoplasmic tail of human surface antigen CD2 via its C-terminal GYF domain, and regulate CD2-triggered T lymphocyte activation. In the nucleus, this protein is a component of the U5 small nuclear ribonucleoprotein complex and is involved in RNA splicing. A pseudogene has been identified on chromosome 7. Alternative splicing results in multiple transcript variants but their biological validity has not been determined. [provided by RefSeq, Nov 2008],

Nanjing BYabscience technology Co.,Ltd



**matters needing attention**

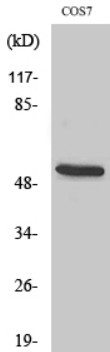
Avoid repeated freezing and thawing!

**Usage suggestions**

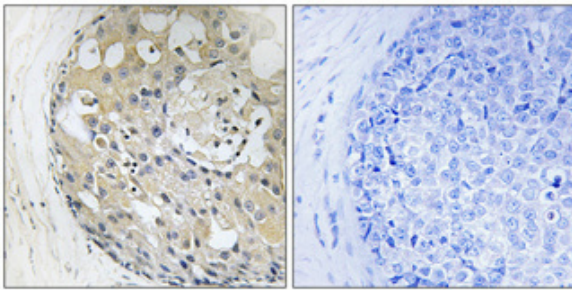
This product can be used in immunological reaction related experiments. For more information, please consult technical personnel.



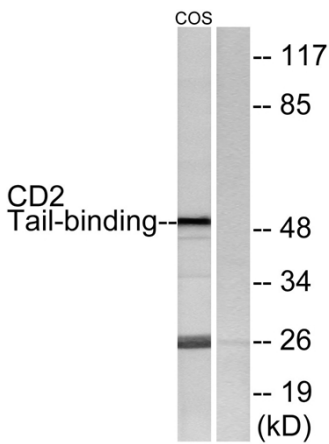
## Products Images



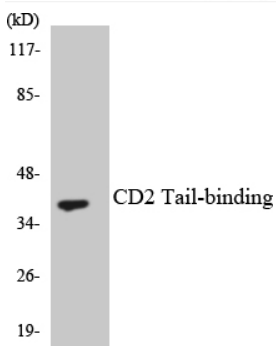
Western Blot analysis of various cells using CD2BP2 Polyclonal Antibody diluted at 1:1000



Immunohistochemical analysis of paraffin-embedded Human breast cancer. Antibody was diluted at 1:100(4° overnight). High-pressure and temperature Tris-EDTA,pH8.0 was used for antigen retrieval. Negative contrl (right) obtained from antibody was pre-absorbed by immunogen peptide.



Western blot analysis of lysates from COS7 cells, using CD2 Tail-binding Antibody. The lane on the right is blocked with the synthesized peptide.



Western blot analysis of the lysates from HeLa cells using CD2 Tail-binding antibody.