



# CD272 Polyclonal Antibody

|                           |   |
|---------------------------|---|
| <b>Catalog No</b>         | BYab-13890  |
| <b>Isotype</b>            | IgG   |
| <b>Reactivity</b>         | Human;Rat;Mouse;  |
| <b>Applications</b>       | WB;IHC;IF;FCM;ELISA   |
| <b>Gene Name</b>          | BTLA  |
| <b>Protein Name</b>       | B- and T-lymphocyte attenuator  |
| <b>Immunogen</b>          | Synthetic peptide from human protein at AA range: 101-150   |
| <b>Specificity</b>        | CD272 Polyclonal Antibody detects endogenous levels of CD272 protein.   |
| <b>Formulation</b>        | Liquid in PBS containing 50% glycerol, 0.5% BSA and 0.02% sodium azide.   |
| <b>Source</b>             | Polyclonal, Rabbit,IgG  |
| <b>Purification</b>       | The antibody was affinity-purified from rabbit antiserum by affinity-chromatography using epitope-specific immunogen.   |
| <b>Dilution</b>           | WB: 1/500 - 1/2000. IHC: 1/200 - 1/1000. Flow cytometry: 1/200 - 1/400. ELISA: 1/10000.. IF 1:50-200  |
| <b>Concentration</b>      | 1 mg/ml   |
| <b>Purity</b>             | ≥90%  |
| <b>Storage Stability</b>  | -20°C/1 year  |
| <b>Synonyms</b>           | BTLA; B- and T-lymphocyte attenuator; B- and T-lymphocyte-associated protein; CD antigen CD272  |
| <b>Observed Band</b>      | 36kD  |
| <b>Cell Pathway</b>       | Cell membrane ; Single-pass type I membrane protein .   |
| <b>Tissue Specificity</b> | PCR rescued clones,Peripheral blood,Thymus,Trachea,   |
| <b>Function</b>           | function:Lymphocyte inhibitory receptor which inhibits lymphocytes during immune response.,PTM:N-glycosylated.,PTM:Phosphorylated on Tyr residues by TNFRSF14 and by antigen receptors cross-linking, both inducing association with PTPN6 and PTPN11.,similarity:Contains 1 Ig-like V-type (immunoglobulin-like) domain.,subunit:Interacts with tyrosine phosphatases PTPN6/SHP-1 and PTPN11/SHP-2. Interacts with TNFRSF14/HVEM., |
| <b>Background</b>         | This gene encodes a member of the immunoglobulin superfamily. The encoded protein contains a single immunoglobulin (Ig) domain and is a receptor that relays inhibitory signals to suppress the immune response. Alternative splicing results in multiple transcript variants. Polymorphisms in this gene have been associated  |

Nanjing BYabscience technology Co.,Ltd



with an increased risk of rheumatoid arthritis. [provided by RefSeq, Aug 2011],

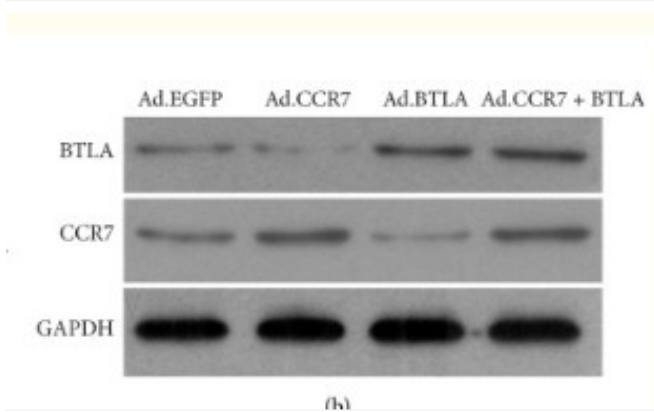
**matters needing attention**

Avoid repeated freezing and thawing!

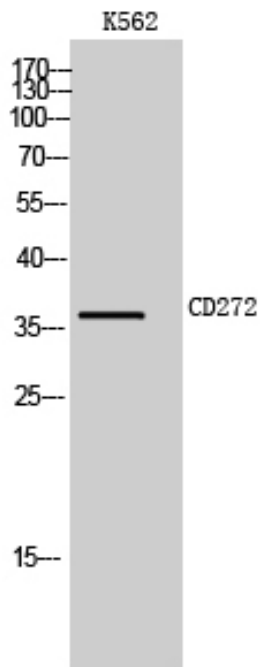
**Usage suggestions**

This product can be used in immunological reaction related experiments. For more information, please consult technical personnel.

## Products Images



Xin, Haiming, et al. "Adenovirus-mediated CCR7 and BTLA overexpression enhances immune tolerance and migration in immature dendritic cells." *BioMed research international* 2017 (2017).



Western Blot analysis of K562 cells using CD272 Polyclonal Antibody