



BST-1 Polyclonal Antibody

Catalog No	BYab-13870
Isotype	IgG
Reactivity	Human;Mouse;Rat;Monkey
Applications	WB;ELISA
Gene Name	BST1
Protein Name	ADP-ribosyl cyclase 2
Immunogen	The antiserum was produced against synthesized peptide derived from human BST1. AA range:71-120
Specificity	BST-1 Polyclonal Antibody detects endogenous levels of BST-1 protein.
Formulation	Liquid in PBS containing 50% glycerol, 0.5% BSA and 0.02% sodium azide.
Source	Polyclonal, Rabbit,IgG
Purification	The antibody was affinity-purified from rabbit antiserum by affinity-chromatography using epitope-specific immunogen.
Dilution	Western Blot: 1/500 - 1/2000. ELISA: 1/40000. Not yet tested in other applications.
Concentration	1 mg/ml
Purity	≥90%
Storage Stability	-20°C/1 year
Synonyms	BST1; ADP-ribosyl cyclase 2; Bone marrow stromal antigen 1; BST-1; Cyclic ADP-ribose hydrolase 2; cADPr hydrolase 2; CD antigen CD157
Observed Band	34kD
Cell Pathway	Cell membrane; Lipid-anchor, GPI-anchor.
Tissue Specificity	Widely expressed.
Function	catalytic activity:NAD(+) + H(2)O = ADP-ribose + nicotinamide.,disease:Rheumatoid arthritis (RA) patients show enhanced expression of BST-1 transcripts in bone marrow stromal cell lines. This suggests that BST-1 overexpression may play a role in B-cell abnormalities in RA.,function:Synthesizes cyclic ADP-ribose, a second messenger that elicits calcium release from intracellular stores. May be involved in pre-B-cell growth.,similarity:Belongs to the ADP-ribosyl cyclase family.,subunit:Homodimer.,tissue specificity:Widely expressed.,

Nanjing BYabscience technology Co.,Ltd



Background

Bone marrow stromal cell antigen-1 is a stromal cell line-derived glycosylphosphatidylinositol-anchored molecule that facilitates pre-B-cell growth. The deduced amino acid sequence exhibits 33% similarity with CD38. BST1 expression is enhanced in bone marrow stromal cell lines derived from patients with rheumatoid arthritis. The polyclonal B-cell abnormalities in rheumatoid arthritis may be, at least in part, attributed to BST1 overexpression in the stromal cell population. [provided by RefSeq, Jul 2008],

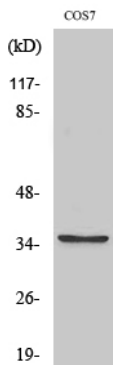
matters needing attention

Avoid repeated freezing and thawing!

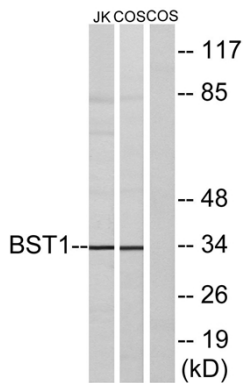
Usage suggestions

This product can be used in immunological reaction related experiments. For more information, please consult technical personnel.

Products Images



Western Blot analysis of various cells using BST-1 Polyclonal Antibody



Western blot analysis of lysates from COS7 and Jurkat cells, using BST1 Antibody. The lane on the right is blocked with the synthesized peptide.