



TIRAP (phospho Tyr86) Polyclonal Antibody

Catalog No	BYab-13856
Isotype	IgG
Reactivity	Human;Mouse
Applications	WB;IHC;IF;ELISA
Gene Name	TIRAP
Protein Name	Toll/interleukin-1 receptor domain-containing adapter protein
Immunogen	The antiserum was produced against synthesized peptide derived from human TIRAP around the phosphorylation site of Tyr86. AA range:52-101
Specificity	Phospho-TIRAP (Y86) Polyclonal Antibody detects endogenous levels of TIRAP protein only when phosphorylated at Y86.
Formulation	Liquid in PBS containing 50% glycerol, 0.5% BSA and 0.02% sodium azide.
Source	Polyclonal, Rabbit,IgG
Purification	The antibody was affinity-purified from rabbit antiserum by affinity-chromatography using epitope-specific immunogen.
Dilution	IHC: 1/100 - 1/300. ELISA: 1/5000.. IF 1:50-200
Concentration	1 mg/ml
Purity	≥90%
Storage Stability	-20°C/1 year
Synonyms	TIRAP; MAL; Toll/interleukin-1 receptor domain-containing adapter protein; TIR domain-containing adapter protein; Adaptor protein Wyatt; MyD88 adapter-like protein
Observed Band	
Cell Pathway	Cytoplasm . Cell membrane . Membrane . Colocalizes with DAB2IP at the plasma membrane.
Tissue Specificity	Highly expressed in liver, kidney, spleen, skeletal muscle and heart. Also detected in peripheral blood leukocytes, lung, placenta, small intestine, thymus, colon and brain.
Function	function:Adapter involved in the TLR4 signaling pathway in the innate immune response. Acts via IRAK2 and TRAF-6, leading to the activation of NF-kappa-B, MAPK1, MAPK3 and JNK, resulting in cytokine secretion and the inflammatory response.,polymorphism:Genetic variation in TIRAP can influence susceptibility or resistance to invasive pneumococcal disease, bacteremia, malaria and tuberculosi.,similarity:Contains 1 TIR domain.,subunit:Homodimer. Also forms heterodimers with MyD88. Binds to TLR4 and IRAK2 via their respective TIR

Nanjing BYabscience technology Co.,Ltd



domains. Binds to PKR and TBK1. Does not interact with IRAK1, nor TLR9.,tissue specificity:Highly expressed in liver, kidney, spleen, skeletal muscle and heart. Also detected in peripheral blood leukocytes, lung, placenta, small intestine, thymus, colon and brain.,

Background

The innate immune system recognizes microbial pathogens through Toll-like receptors (TLRs), which identify pathogen-associated molecular patterns. Different TLRs recognize different pathogen-associated molecular patterns and all TLRs have a Toll-interleukin 1 receptor (TIR) domain, which is responsible for signal transduction. The protein encoded by this gene is a TIR adaptor protein involved in the TLR4 signaling pathway of the immune system. It activates NF-kappa-B, MAPK1, MAPK3 and JNK, which then results in cytokine secretion and the inflammatory response. Alternative splicing of this gene results in several transcript variants; however, not all variants have been fully described. [provided by RefSeq, Jul 2008],

matters needing attention

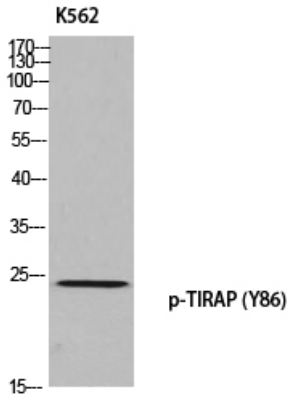
Avoid repeated freezing and thawing!

Usage suggestions

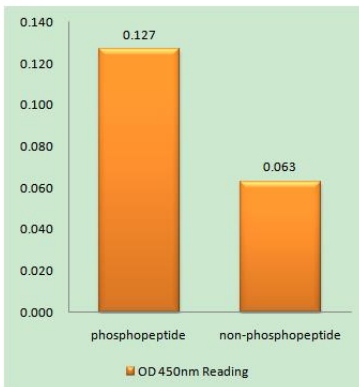
This product can be used in immunological reaction related experiments. For more information, please consult technical personnel.



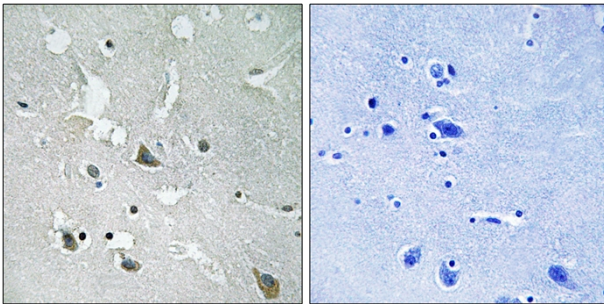
Products Images



Western blot analysis of K562 using p-TIRAP (Y86) antibody.



Enzyme-Linked Immunosorbent Assay (Phospho-ELISA) for Immunogen Phosphopeptide (Phospho-left) and Non-Phosphopeptide (Phospho-right), using TIRAP (Phospho-Tyr86) Antibody



Immunohistochemistry analysis of paraffin-embedded human brain, using TIRAP (Phospho-Tyr86) Antibody. The picture on the right is blocked with the phosphopeptide.