



CD28 (phospho Tyr218) Polyclonal Antibody

Catalog No	BYab-13843
Isotype	IgG
Reactivity	Human
Applications	WB;ELISA
Gene Name	CD28
Protein Name	T-cell-specific surface glycoprotein CD28
Immunogen	The antiserum was produced against synthesized peptide derived from human CD28 around the phosphorylation site of Tyr218. AA range:171-220
Specificity	Phospho-CD28 (Y218) Polyclonal Antibody detects endogenous levels of CD28 protein only when phosphorylated at Y218.
Formulation	Liquid in PBS containing 50% glycerol, 0.5% BSA and 0.02% sodium azide.
Source	Polyclonal, Rabbit,IgG
Purification	The antibody was affinity-purified from rabbit antiserum by affinity-chromatography using epitope-specific immunogen.
Dilution	Western Blot: 1/500 - 1/2000. ELISA: 1/40000. Not yet tested in other applications.
Concentration	1 mg/ml
Purity	≥90%
Storage Stability	-20°C/1 year
Synonyms	CD28; T-cell-specific surface glycoprotein CD28; TP44; CD antigen CD28
Observed Band	45kD
Cell Pathway	Membrane; Single-pass type I membrane protein.; [Isoform 3]: Cell surface .
Tissue Specificity	Expressed in T-cells and plasma cells, but not in less mature B-cells.
Function	function:Involved in T-cell activation, the induction of cell proliferation and cytokine production and promotion of T-cell survival.,online information:CD28 entry,similarity:Contains 1 Ig-like V-type (immunoglobulin-like) domain.,subunit:Homodimer; disulfide-linked. Interacts with DUSP14. Binds to CD80/B7-1 and CD86/B7-2/B70.,tissue specificity:Expressed in T-cells and plasma cells, but not in less mature B-cells.,
Background	The protein encoded by this gene is essential for T-cell proliferation and survival, cytokine production, and T-helper type-2 development. Several alternatively spliced transcript variants encoding different isoforms have been found for this gene.[provided by RefSeq, Jul 2011],

Nanjing BYabscience technology Co.,Ltd



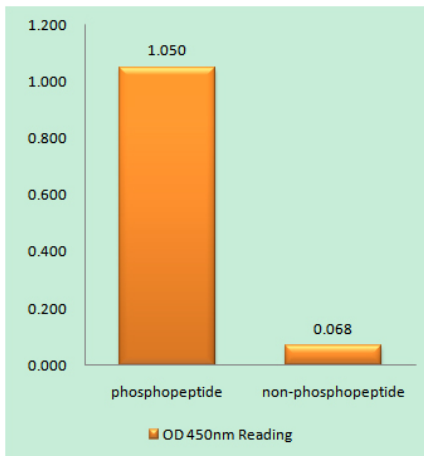
matters needing attention

Avoid repeated freezing and thawing!

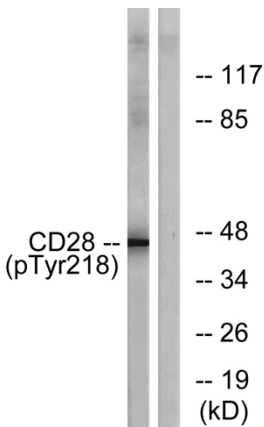
Usage suggestions

This product can be used in immunological reaction related experiments. For more information, please consult technical personnel.

Products Images



Enzyme-Linked Immunosorbent Assay (Phospho-ELISA) for Immunogen Phosphopeptide (Phospho-left) and Non-Phosphopeptide (Phospho-right), using CD28 (Phospho-Tyr218) Antibody



Western blot analysis of lysates from HepG2 cells treated with nocodazole 1ug/ml 16h, using CD28 (Phospho-Tyr218) Antibody. The lane on the right is blocked with the phospho peptide.