



CD10 Monoclonal Antibody(5B8)

Catalog No	BYab-13835
Isotype	IgG
Reactivity	Human;Mouse;Rat
Applications	IF;IHC
Gene Name	MME
Protein Name	Neprilysin
Immunogen	Synthetic Peptide of CD10
Specificity	The antibody detects endogenous CD10 proteins.
Formulation	PBS, pH 7.4, containing 0.5%BSA, 0.02% sodium azide as Preservative and 50% Glycerol.
Source	Monoclonal, Mouse
Purification	The antibody was affinity-purified from mouse ascites by affinity-chromatography using specific immunogen.
Dilution	IF: 1:50-200 WB 500-2000 : 1:200
Concentration	1 mg/ml
Purity	≥90%
Storage Stability	-20°C/1 year
Synonyms	MME; EPN; Neprilysin; Atriopeptidase; Common acute lymphocytic leukemia antigen; CALLA; Enkephalinase; Neutral endopeptidase 24.11; NEP; Neutral endopeptidase; Skin fibroblast elastase; SFE; CD10
Observed Band	
Cell Pathway	Cell membrane; Single-pass type II membrane protein.
Tissue Specificity	Adrenal cortex,Brain,Kidney,Placenta,
Function	catalytic activity:Preferential cleavage of polypeptides between hydrophobic residues, particularly with Phe or Tyr at P1'. ,cofactor:Binds 1 zinc ion per subunit. ,disease:Important cell surface marker in the diagnostic of human acute lymphocytic leukemia. ,enzyme regulation:Inhibited in a dose dependent manner by opiorphin. ,function:Thermolysin-like specificity, but is almost confined on acting on polypeptides of up to 30 amino acids. Biologically important in the destruction of opioid peptides such as Met- and Leu-enkephalins by cleavage of a Gly-Phe bond. Involved in the degradation of atrial natriuretic factor (ANF). ,similarity:Belongs to the peptidase M13 family. ,

Nanjing BYabscience technology Co.,Ltd



Background

This gene encodes a common acute lymphocytic leukemia antigen that is an important cell surface marker in the diagnosis of human acute lymphocytic leukemia (ALL). This protein is present on leukemic cells of pre-B phenotype, which represent 85% of cases of ALL. This protein is not restricted to leukemic cells, however, and is found on a variety of normal tissues. It is a glycoprotein that is particularly abundant in kidney, where it is present on the brush border of proximal tubules and on glomerular epithelium. The protein is a neutral endopeptidase that cleaves peptides at the amino side of hydrophobic residues and inactivates several peptide hormones including glucagon, enkephalins, substance P, neurotensin, oxytocin, and bradykinin. This gene, which encodes a 100-kD type II transmembrane glycoprotein, exists in a single copy of greater than 45 kb. The 5' untranslated region of this

matters needing attention

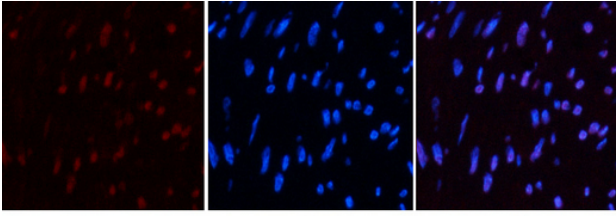
Avoid repeated freezing and thawing!

Usage suggestions

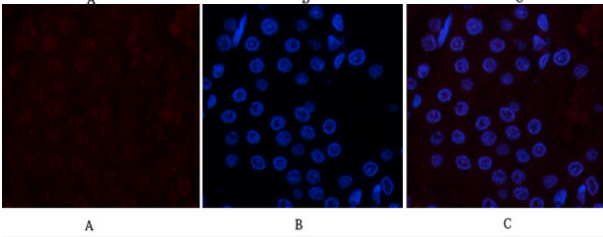
This product can be used in immunological reaction related experiments. For more information, please consult technical personnel.



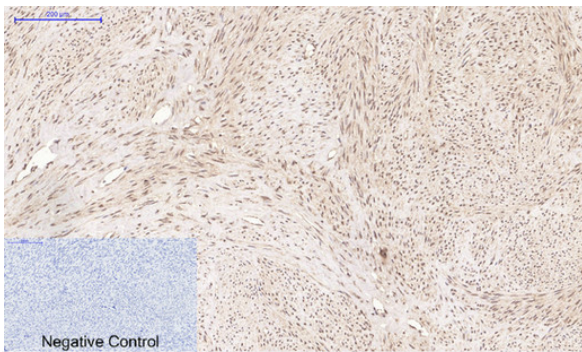
Products Images



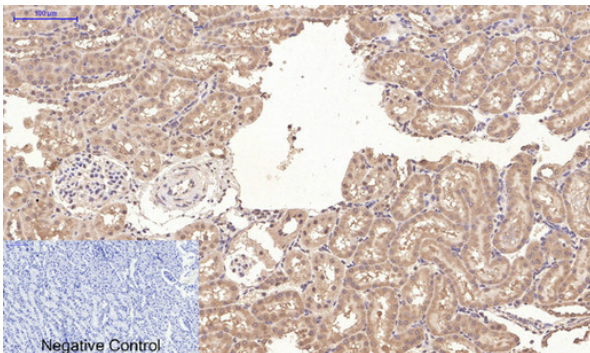
Immunofluorescence analysis of human-uterus tissue. 1, CD10 Monoclonal Antibody(5B8)(red) was diluted at 1:200(4°C, overnight). 2, Cy3 labeled Secondary antibody was diluted at 1:300(room temperature, 50min). 3, Picture B: DAPI(blue) 10min. Picture A: Target. Picture B: DAPI. Picture C: merge of A+B



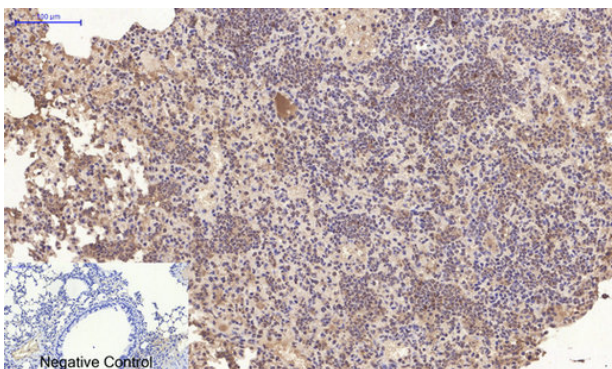
Immunofluorescence analysis of rat-kidney tissue. 1, CD10 Monoclonal Antibody(5B8)(red) was diluted at 1:200(4°C, overnight). 2, Cy3 labeled Secondary antibody was diluted at 1:300(room temperature, 50min). 3, Picture B: DAPI(blue) 10min. Picture A: Target. Picture B: DAPI. Picture C: merge of A+B

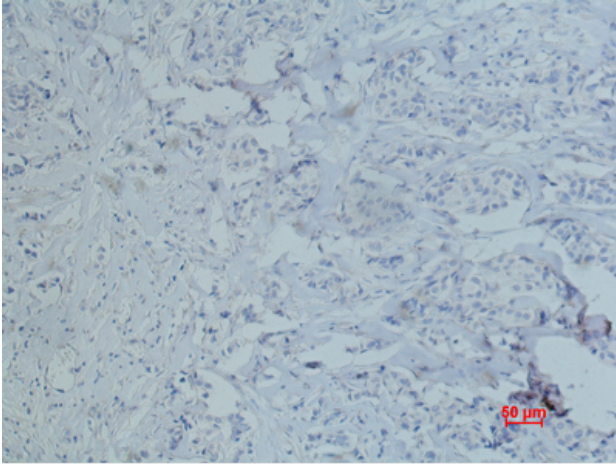


Immunohistochemical analysis of paraffin-embedded Human-uterus tissue. 1, CD10 Monoclonal Antibody(5B8) was diluted at 1:200(4°C, overnight). 2, Sodium citrate pH 6.0 was used for antibody retrieval(>98°C, 20min). 3, Secondary antibody was diluted at 1:200(room temperature, 30min). Negative control was used by secondary antibody only.



Immunohistochemical analysis of paraffin-embedded Rat-kidney tissue. 1, CD10 Monoclonal Antibody(5B8) was diluted at 1:200(4°C, overnight). 2, Sodium citrate pH 6.0 was used for antibody retrieval(>98°C, 20min). 3, Secondary antibody was diluted at 1:200(room temperature, 30min). Negative control was used by secondary antibody only.





Immunohistochemical analysis of paraffin-embedded Mouse-lung tissue. 1,CD10 Monoclonal Antibody(5B8) was diluted at 1:200(4°C,overnight). 2, Sodium citrate pH 6.0 was used for antibody retrieval(>98°C,20min). 3,Secondary antibody was diluted at 1:200(room tempeRature, 30min). Negative control was used by secondary antibody only.