



GKLF Monoclonal Antibody

Catalog No	BYab-13815
Isotype	IgG
Reactivity	Human
Applications	WB;IHC;IF;ELISA
Gene Name	MS4A1
Protein Name	B-lymphocyte antigen CD20
Immunogen	Purified recombinant fragment of human GKLF expressed in E. Coli.
Specificity	GKLF Monoclonal Antibody detects endogenous levels of GKLF protein.
Formulation	Ascitic fluid containing 0.03% sodium azide,0.5% BSA, 50%glycerol.
Source	Monoclonal, Mouse
Purification	Affinity purification
Dilution	WB: 1/500 - 1/2000. IHC: 1/200 - 1/1000. ELISA: 1/10000.. IF 1:50-200
Concentration	1 mg/ml
Purity	≥90%
Storage Stability	-20°C/1 year
Synonyms	MS4A1; CD20; B-lymphocyte antigen CD20; B-lymphocyte surface antigen B1; Bp35; Leukocyte surface antigen Leu-16; Membrane-spanning 4-domains subfamily A member 1; CD antigen CD20
Observed Band	
Cell Pathway	Cell membrane ; Multi-pass membrane protein . Cell membrane ; Lipid-anchor . Constitutively associated with membrane rafts. .
Tissue Specificity	Expressed on B-cells.
Function	caution:Epitope 1, mapped in PubMed:16785532, is predicted to be buried in the membrane. Its accessibility to the extracellular space, and thus to antibody recognition, is not explained.,function:This protein may be involved in the regulation of B-cell activation and proliferation.,online information:CD20 entry,pharmaceutical:Monoclonal antibodies(mAb) against CD20 are used to treat B-cell non-Hodgkin's lymphoma (NHL). These antibodies include Rituximab (Mabthera), Britumomab (Zevalin) and Tositumomab (Bexxar). CD20 engaged by mAb can generate transmembrane signals capable of directly controlling cell growth and triggering cell death in certain tumors. Alternatively, mAb can mediate complement-dependent cytotoxicity.,PTM:Phosphorylated. Might be functionally

Nanjing BYabscience technology Co.,Ltd



regulated by protein kinase(s).,similarity:Belongs to the MS4A family.,tissue specificity:Expressed on B-cells.,

Background

This gene encodes a member of the membrane-spanning 4A gene family. Members of this nascent protein family are characterized by common structural features and similar intron/exon splice boundaries and display unique expression patterns among hematopoietic cells and nonlymphoid tissues. This gene encodes a B-lymphocyte surface molecule which plays a role in the development and differentiation of B-cells into plasma cells. This family member is localized to 11q12, among a cluster of family members. Alternative splicing of this gene results in two transcript variants which encode the same protein. [provided by RefSeq, Jul 2008],

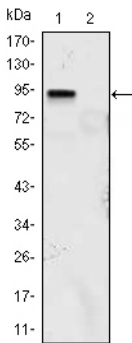
matters needing attention

Avoid repeated freezing and thawing!

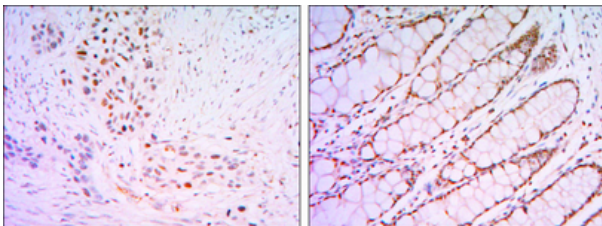
Usage suggestions

This product can be used in immunological reaction related experiments. For more information, please consult technical personnel.

Products Images



Western Blot analysis using GKLF Monoclonal Antibody against KLF4 (aa2-470)-hlgGfC transfected HEK293 (1) and HEK293 (2) cell lysate.



Immunohistochemistry analysis of paraffin-embedded lung cancer tissues (left) and human rectum tissues (right) with DAB staining using GKLF Monoclonal Antibody.

Nanjing BYabscience technology Co.,Ltd