



# EphB3 Polyclonal Antibody

<b>Catalog No</b>	BYab-13764
<b>Isotype</b>	IgG
<b>Reactivity</b>	Human;Mouse;Rat
<b>Applications</b>	IHC;IF;ELISA
<b>Gene Name</b>	EPHB3 ETK2 HEK2 TYRO6
<b>Protein Name</b>	Ephrin type-B receptor 3 (EC 2.7.10.1) (EPH-like tyrosine kinase 2) (EPH-like kinase 2) (Embryonic kinase 2) (EK2) (hEK2) (Tyrosine-protein kinase TYRO6)
<b>Immunogen</b>	Synthetic peptide from human protein at AA range: 650-700
<b>Specificity</b>	The antibody detects endogenous EphB3
<b>Formulation</b>	Liquid in PBS containing 50% glycerol, 0.5% BSA and 0.02% sodium azide.
<b>Source</b>	Polyclonal, Rabbit,IgG
<b>Purification</b>	The antibody was affinity-purified from rabbit antiserum by affinity-chromatography using epitope-specific immunogen.
<b>Dilution</b>	IHC-p 1:50-200, ELISA 1:10000-20000. IF 1:50-200
<b>Concentration</b>	1 mg/ml
<b>Purity</b>	≥90%
<b>Storage Stability</b>	-20°C/1 year
<b>Synonyms</b>	Ephrin type-B receptor 3 (EC 2.7.10.1;EPH-like tyrosine kinase 2;EPH-like kinase 2;Embryonic kinase 2;EK2;hEK2;Tyrosine-protein kinase TYRO6)
<b>Observed Band</b>	
<b>Cell Pathway</b>	Cell membrane ; Single-pass type I membrane protein . Cell projection, dendrite .
<b>Tissue Specificity</b>	Ubiquitous.
<b>Function</b>	catalytic activity:ATP + a [protein]-L-tyrosine = ADP + a [protein]-L-tyrosine phosphate.,function:Receptor for members of the ephrin-B family. Binds to ephrin-B1 and -B2.,similarity:Belongs to the protein kinase superfamily. Tyr protein kinase family. Ephrin receptor subfamily.,similarity:Contains 1 protein kinase domain.,similarity:Contains 1 SAM (sterile alpha motif) domain.,similarity:Contains 2 fibronectin type-III domains.,tissue specificity:Ubiquitous.,
<b>Background</b>	Ephrin receptors and their ligands, the ephrins, mediate numerous developmental processes, particularly in the nervous system. Based on their structures and sequence relationships, ephrins are divided into the ephrin-A

Nanjing BYabscience technology Co.,Ltd



(EFNA) class, which are anchored to the membrane by a glycosylphosphatidylinositol linkage, and the ephrin-B (EFNB) class, which are transmembrane proteins. The Eph family of receptors are divided into two groups based on the similarity of their extracellular domain sequences and their affinities for binding ephrin-A and ephrin-B ligands. Ephrin receptors make up the largest subgroup of the receptor tyrosine kinase (RTK) family. This gene encodes a receptor for ephrin-B family members. [provided by RefSeq, Mar 2010],

**matters needing attention**

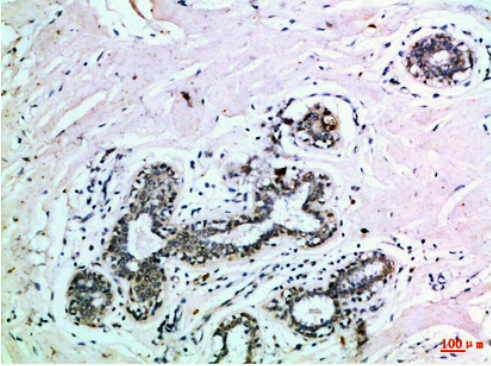
Avoid repeated freezing and thawing!

**Usage suggestions**

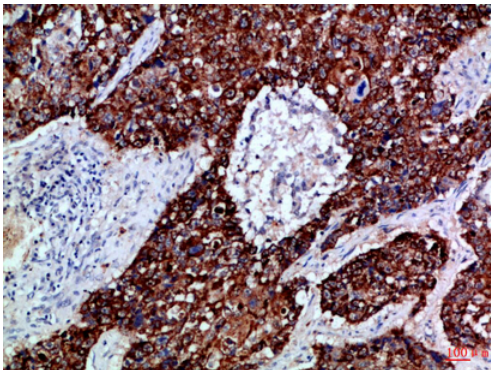
This product can be used in immunological reaction related experiments. For more information, please consult technical personnel.



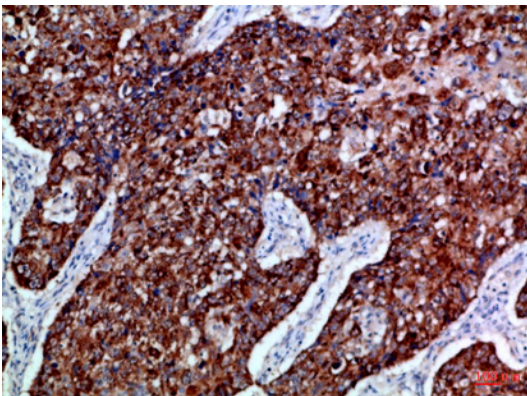
## Products Images



Immunohistochemical analysis of paraffin-embedded Human-breast, antibody was diluted at 1:100



Immunohistochemical analysis of paraffin-embedded Human-lung-cancer, antibody was diluted at 1:100



Immunohistochemical analysis of paraffin-embedded Human-lung-cancer, antibody was diluted at 1:100