



AVP Receptor V3 Polyclonal Antibody

Catalog No	BYab-13763
Isotype	IgG
Reactivity	Human;Mouse;Rat
Applications	IHC;IF;ELISA
Gene Name	AVPR1B AVPR3 VPR3
Protein Name	Vasopressin V1b receptor (V1bR) (AVPR V1b) (AVPR V3) (Antidiuretic hormone receptor 1b) (Vasopressin V3 receptor)
Immunogen	The antiserum was produced against synthesized peptide derived from the Internal region of human AVPR1B. AA range:271-320
Specificity	The antibody detects endogenous AVP Receptor V3
Formulation	Liquid in PBS containing 50% glycerol, 0.5% BSA and 0.02% sodium azide.
Source	Polyclonal, Rabbit,IgG
Purification	The antibody was affinity-purified from rabbit antiserum by affinity-chromatography using epitope-specific immunogen.
Dilution	IHC-p 1:50-200, ELISA 1:10000-20000. IF 1:50-200
Concentration	1 mg/ml
Purity	≥90%
Storage Stability	-20°C/1 year
Synonyms	Vasopressin V1b receptor (V1bR;AVPR V1b;AVPR V3;Antidiuretic hormone receptor 1b;Vasopressin V3 receptor)
Observed Band	
Cell Pathway	Cell membrane ; Multi-pass membrane protein .
Tissue Specificity	Lung carcinoma,Pituitary,
Function	function:Receptor for arginine vasopressin. The activity of this receptor is mediated by G proteins which activate a phosphatidylinositol-calcium second messenger system..similarity:Belongs to the G-protein coupled receptor 1 family.,
Background	The protein encoded by this gene acts as receptor for arginine vasopressin. This receptor belongs to the subfamily of G-protein coupled receptors which includes AVPR1A, V2R and OXT receptors. Its activity is mediated by G proteins which stimulate a phosphatidylinositol-calcium second messenger system. The receptor is primarily located in the anterior pituitary, where it stimulates ACTH release. It is expressed at high levels in ACTH-secreting pituitary adenomas as well as in

Nanjing BYabscience technology Co.,Ltd



bronchial carcinoids responsible for the ectopic ACTH syndrome. A spliced antisense transcript of this gene has been reported but its function is not known. [provided by RefSeq, Jul 2008],

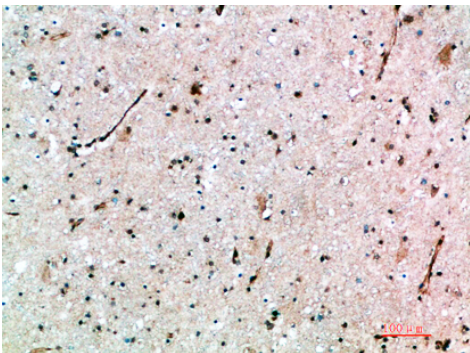
matters needing attention

Avoid repeated freezing and thawing!

Usage suggestions

This product can be used in immunological reaction related experiments. For more information, please consult technical personnel.

Products Images



Immunohistochemical analysis of paraffin-embedded human-brain, antibody was diluted at 1:200