



ALR Polyclonal Antibody

Catalog No	BYab-13741
Isotype	IgG
Reactivity	Human;Mouse;Rat
Applications	WB;IHC;IF;ELISA
Gene Name	GFER
Protein Name	FAD-linked sulfhydryl oxidase ALR
Immunogen	The antiserum was produced against synthesized peptide derived from the Internal region of human GFER. AA range:51-100
Specificity	ALR Polyclonal Antibody detects endogenous levels of ALR protein.
Formulation	Liquid in PBS containing 50% glycerol, 0.5% BSA and 0.02% sodium azide.
Source	Polyclonal, Rabbit,IgG
Purification	The antibody was affinity-purified from rabbit antiserum by affinity-chromatography using epitope-specific immunogen.
Dilution	WB: 1/500 - 1/2000. IHC-p: 1:100-1:300. ELISA: 1/20000.. IF 1:50-200
Concentration	1 mg/ml
Purity	≥90%
Storage Stability	-20°C/1 year
Synonyms	GFER; ALR; HERV1; HPO; FAD-linked sulfhydryl oxidase ALR; Augmenter of liver regeneration; hERV1; Hepatopoietin
Observed Band	24kD
Cell Pathway	[Isoform 1]: Mitochondrion intermembrane space. Mitochondrion .; [Isoform 2]: Cytoplasm. Secreted.
Tissue Specificity	Ubiquitously expressed. Highest expression in the testis and liver and low expression in the muscle.
Function	catalytic activity:4 R'C(R)SH + O(2) = 2 R'C(R)S-S(R)CR' + 2 H(2)O.,cofactor:FAD.,function:FAD-dependent sulfhydryl oxidase that catalyzes disulfide bond formation.,similarity:Contains 1 ERV/ALR sulfhydryl oxidase domain.,subunit:Homodimer.,
Background	The hepatotropic factor designated augmenter of liver regeneration (ALR) is thought to be one of the factors responsible for the extraordinary regenerative capacity of mammalian liver. It has also been called hepatic regenerative stimulation substance (HSS). The gene resides on chromosome 16 in the interval containing the locus for polycystic kidney disease (PKD1). The putative gene

Nanjing BYabscience technology Co.,Ltd



product is 42% similar to the scERV1 protein of yeast. The yeast scERV1 gene had been found to be essential for oxidative phosphorylation, the maintenance of mitochondrial genomes, and the cell division cycle. The human gene is both the structural and functional homolog of the yeast scERV1 gene. [provided by RefSeq, Jul 2008],

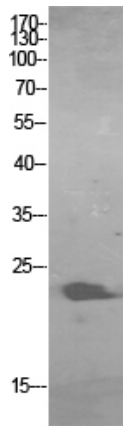
matters needing attention

Avoid repeated freezing and thawing!

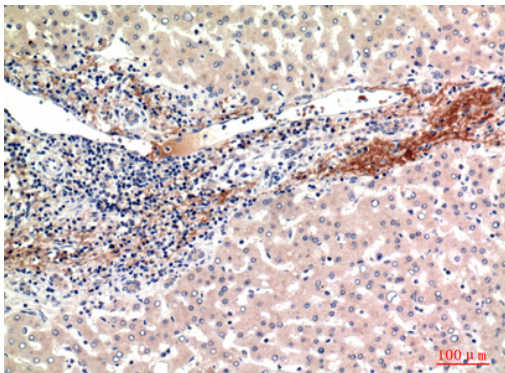
Usage suggestions

This product can be used in immunological reaction related experiments. For more information, please consult technical personnel.

Products Images



Western Blot analysis of HBE cells using ALR Polyclonal Antibody. Secondary antibody(catalog#:RS0002) was diluted at 1:20000



Immunohistochemical analysis of paraffin-embedded human-liver, antibody was diluted at 1:100

Nanjing BYabscience technology Co.,Ltd

网址: www.njbybio.com

官方热线: 025-5229-8998

监督电话: 15950492658