



G-CSFR Polyclonal Antibody

Catalog No	BYab-13740
Isotype	IgG
Reactivity	Human;Rat;Mouse;
Applications	WB;ELISA
Gene Name	CSF3R
Protein Name	Granulocyte colony-stimulating factor receptor
Immunogen	The antiserum was produced against synthesized peptide derived from the Internal region of human CSF3R. AA range:321-370
Specificity	G-CSFR Polyclonal Antibody detects endogenous levels of G-CSFR protein.
Formulation	Liquid in PBS containing 50% glycerol, 0.5% BSA and 0.02% sodium azide.
Source	Polyclonal, Rabbit,IgG
Purification	The antibody was affinity-purified from rabbit antiserum by affinity-chromatography using epitope-specific immunogen.
Dilution	Western Blot: 1/500 - 1/2000. ELISA: 1/20000. Not yet tested in other applications.
Concentration	1 mg/ml
Purity	≥90%
Storage Stability	-20°C/1 year
Synonyms	CSF3R; GCSFR; Granulocyte colony-stimulating factor receptor; G-CSF receptor; G-CSF-R; CD114
Observed Band	92kD
Cell Pathway	[Isoform 2]: Secreted .; Cell membrane ; Single-pass type I membrane protein .
Tissue Specificity	One or several isoforms have been found in myelogenous leukemia cell line KG-1, leukemia U-937 cell line, in bone marrow cells, placenta, and peripheral blood granulocytes. Isoform GCSFR-2 is found only in leukemia U-937 cells. Isoform GCSFR-3 is highly expressed in placenta.
Function	alternative products:Additional isoforms seem to exist. Experimental confirmation may be lacking for some isoforms,disease:Defects in CSF3R may be a cause of severe congenital neutropenia (SCN) in some patients.,domain:The box 1 motif is required for JAK interaction and/or activation.,domain:The WSXWS motif appears to be necessary for proper protein folding and thereby efficient intracellular transport and cell-surface receptor binding.,function:Receptor for granulocyte colony-stimulating factor (CSF3). In addition it may function in some adhesion or recognition events at the cell surface.,similarity:Belongs to the type I cytokine

Nanjing BYabscience technology Co.,Ltd



receptor family. Type 2 subfamily.,similarity:Contains 1 Ig-like C2-type (immunoglobulin-like) domain.,similarity:Contains 5 fibronectin type-III domains.,subunit:Homodimer. The dimeric receptor binds two CSF3 molecules.,tissue specificity:One or several isoform

Background

The protein encoded by this gene is the receptor for colony stimulating factor 3, a cytokine that controls the production, differentiation, and function of granulocytes. The encoded protein, which is a member of the family of cytokine receptors, may also function in some cell surface adhesion or recognition processes. Alternatively spliced transcript variants have been described. Mutations in this gene are a cause of Kostmann syndrome, also known as severe congenital neutropenia. [provided by RefSeq, Aug 2010],

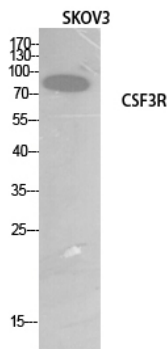
matters needing attention

Avoid repeated freezing and thawing!

Usage suggestions

This product can be used in immunological reaction related experiments. For more information, please consult technical personnel.

Products Images



Western Blot analysis of SKOV3 cells using G-CSFR Polyclonal Antibody. Secondary antibody(catalog#:RS0002) was diluted at 1:20000