



TMEM16A Polyclonal Antibody

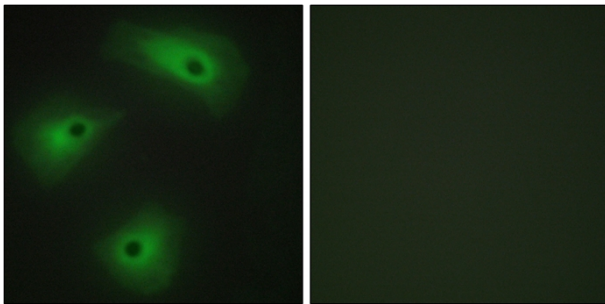
Catalog No	BYab-13705
Isotype	IgG
Reactivity	Human;Mouse;
Applications	IF;ELISA
Gene Name	ANO1
Protein Name	Anoctamin-1
Immunogen	The antiserum was produced against synthesized peptide derived from human TM16A. AA range:921-970
Specificity	TMEM16A Polyclonal Antibody detects endogenous levels of TMEM16A protein.
Formulation	Liquid in PBS containing 50% glycerol, 0.5% BSA and 0.02% sodium azide.
Source	Polyclonal, Rabbit,IgG
Purification	The antibody was affinity-purified from rabbit antiserum by affinity-chromatography using epitope-specific immunogen.
Dilution	Immunofluorescence: 1/200 - 1/1000. ELISA: 1/20000. Not yet tested in other applications.
Concentration	1 mg/ml
Purity	≥90%
Storage Stability	-20°C/1 year
Synonyms	ANO1; DOG1; ORAOV2; TAOS2; TMEM16A; Anoctamin-1; Discovered on gastrointestinal stromal tumors protein 1; Oral cancer overexpressed protein 2; Transmembrane protein 16A; Tumor-amplified and overexpressed sequence 2
Observed Band	
Cell Pathway	Cell membrane ; Multi-pass membrane protein . Cytoplasm . Cytoplasmic localization seen in neoplastic cells of head and neck squamous cell carcinoma (HNSCC) tumors. .
Tissue Specificity	Broadly expressed with higher levels in liver, skeletal muscle and gastrointestinal muscles.
Function	domain:The region spanning the fifth and sixth transmembrane domains probably forms the pore-forming region.,function:Acts as a calcium-activated chloride channel. Required for normal tracheal development.,similarity:Belongs to the anoctamin family.,tissue specificity:Broadly expressed with higher levels in liver and skeletal muscle.,

Nanjing BYabscience technology Co.,Ltd



Background	domain:The region spanning the fifth and sixth transmembrane domains probably forms the pore-forming region.,function:Acts as a calcium-activated chloride channel. Required for normal tracheal development.,similarity:Belongs to the anoctamin family.,tissue specificity:Broadly expressed with higher levels in liver and skeletal muscle.,
matters needing attention	Avoid repeated freezing and thawing!
Usage suggestions	This product can be used in immunological reaction related experiments. For more information, please consult technical personnel.

Products Images



Immunofluorescence analysis of HeLa cells, using TM16A Antibody. The picture on the right is blocked with the synthesized peptide.