



# TMEM101 Polyclonal Antibody

<b>Catalog No</b>	BYab-13703
<b>Isotype</b>	IgG
<b>Reactivity</b>	Human;Mouse
<b>Applications</b>	WB;ELISA
<b>Gene Name</b>	TMEM101
<b>Protein Name</b>	Transmembrane protein 101
<b>Immunogen</b>	The antiserum was produced against synthesized peptide derived from human TMEM101. AA range:101-150
<b>Specificity</b>	TMEM101 Polyclonal Antibody detects endogenous levels of TMEM101 protein.
<b>Formulation</b>	Liquid in PBS containing 50% glycerol, 0.5% BSA and 0.02% sodium azide.
<b>Source</b>	Polyclonal, Rabbit,IgG
<b>Purification</b>	The antibody was affinity-purified from rabbit antiserum by affinity-chromatography using epitope-specific immunogen.
<b>Dilution</b>	Western Blot: 1/500 - 1/2000. ELISA: 1/10000. Not yet tested in other applications.
<b>Concentration</b>	1 mg/ml
<b>Purity</b>	≥90%
<b>Storage Stability</b>	-20°C/1 year
<b>Synonyms</b>	TMEM101; Transmembrane protein 101; Putative NF-kappa-B-activating protein 130
<b>Observed Band</b>	28kD
<b>Cell Pathway</b>	Membrane ; Multi-pass membrane protein .
<b>Tissue Specificity</b>	Lung,Muscle,
<b>Function</b>	function:May activate NF-kappa-B signaling pathways.,
<b>Background</b>	function:May activate NF-kappa-B signaling pathways.,
<b>matters needing attention</b>	Avoid repeated freezing and thawing!

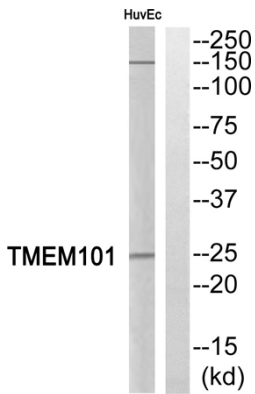
Nanjing BYabscience technology Co.,Ltd



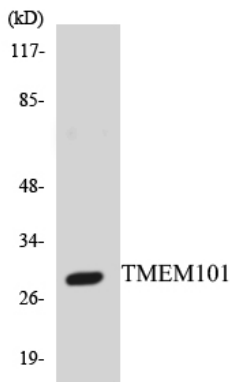
### Usage suggestions

This product can be used in immunological reaction related experiments. For more information, please consult technical personnel.

## Products Images



Western blot analysis of TMEM101 Antibody. The lane on the right is blocked with the TMEM101 peptide.



Western blot analysis of the lysates from HepG2 cells using TMEM101 antibody.