



TAAR5 Polyclonal Antibody

Catalog No	BYab-13692
Isotype	IgG
Reactivity	Human;Rat;Mouse;
Applications	WB;ELISA
Gene Name	TAAR5
Protein Name	Trace amine-associated receptor 5
Immunogen	The antiserum was produced against synthesized peptide derived from human TAAR5. AA range:288-337
Specificity	TAAR5 Polyclonal Antibody detects endogenous levels of TAAR5 protein.
Formulation	Liquid in PBS containing 50% glycerol, 0.5% BSA and 0.02% sodium azide.
Source	Polyclonal, Rabbit,IgG
Purification	The antibody was affinity-purified from rabbit antiserum by affinity-chromatography using epitope-specific immunogen.
Dilution	Western Blot: 1/500 - 1/2000. ELISA: 1/20000. Not yet tested in other applications.
Concentration	1 mg/ml
Purity	≥90%
Storage Stability	-20°C/1 year
Synonyms	TAAR5; PNR; Trace amine-associated receptor 5; TaR-5; Trace amine receptor 5; Putative neurotransmitter receptor
Observed Band	38kD
Cell Pathway	Cell membrane ; Multi-pass membrane protein .
Tissue Specificity	Expressed almost exclusively in skeletal muscle and selected areas of the brain, such amygdala, hippocampus, caudate nucleus, thalamus and hypothalamus. Weak expression is also find in substantia nigra.
Function	function:Orphan receptor. Ligands are likely small molecules, either sharing some similarities with trace amine as, e.g. derivatives of indolamines (such as 5-methoxytryptamine) or of phenylethylamines (such as phenylethanolamine) or being any kind of metabolite of amino acids or biogenic amine neurotransmitters.,similarity:Belongs to the G-protein coupled receptor 1 family.,tissue specificity:Expressed almost exclusively in skeletal muscle and selected areas of the brain, such amygdala, hippocampus, caudate nucleus, thalamus and hypothalamus. Weak expression is also find in substantia nigra.,

Nanjing BYabscience technology Co.,Ltd



Background

function:Orphan receptor. Ligands are likely small molecules, either sharing some similarities with trace amine as, e.g. derivatives of indolamines (such as 5-methoxytryptamine) or of phenylethylamines (such as phenylethanolamine) or being any kind of metabolite of amino acids or biogenic amine neurotransmitters.,similarity:Belongs to the G-protein coupled receptor 1 family.,tissue specificity:Expressed almost exclusively in skeletal muscle and selected areas of the brain, such amygdala, hippocampus, caudate nucleus, thalamus and hypothalamus. Weak expression is also find in substantia nigra.,

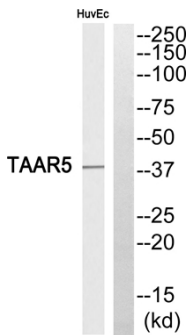
matters needing attention

Avoid repeated freezing and thawing!

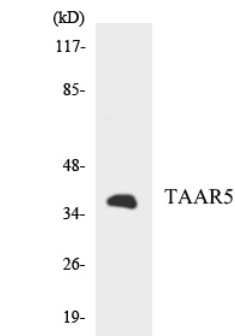
Usage suggestions

This product can be used in immunological reaction related experiments. For more information, please consult technical personnel.

Products Images



Western blot analysis of TAAR5 Antibody. The lane on the right is blocked with the TAAR5 peptide.



Western blot analysis of the lysates from HUVECcells using TAAR5 antibody.

Nanjing BYabscience technology Co.,Ltd