



Secretin Receptor Polyclonal Antibody

Catalog No	BYab-13673
Isotype	IgG
Reactivity	Human;Rat;Mouse;
Applications	WB;IHC;IF;ELISA
Gene Name	SCTR
Protein Name	Secretin receptor
Immunogen	The antiserum was produced against synthesized peptide derived from human SCTR. AA range:100-149
Specificity	Secretin Receptor Polyclonal Antibody detects endogenous levels of Secretin Receptor protein.
Formulation	Liquid in PBS containing 50% glycerol, 0.5% BSA and 0.02% sodium azide.
Source	Polyclonal, Rabbit,IgG
Purification	The antibody was affinity-purified from rabbit antiserum by affinity-chromatography using epitope-specific immunogen.
Dilution	Western Blot: 1/500 - 1/2000. Immunohistochemistry: 1/100 - 1/300. Immunofluorescence: 1/200 - 1/1000. ELISA: 1/20000. Not yet tested in other applications.
Concentration	1 mg/ml
Purity	≥90%
Storage Stability	-20°C/1 year
Synonyms	SCTR; Secretin receptor; SCT-R
Observed Band	48kD
Cell Pathway	Cell membrane ; Multi-pass membrane protein .
Tissue Specificity	Brain,Kidney,Lung,Pancreas,
Function	function:This is a receptor for secretin. The activity of this receptor is mediated by G proteins which activate adenylyl cyclase.,similarity:Belongs to the G-protein coupled receptor 2 family.,
Background	secretin receptor(SCTR) Homo sapiens The protein encoded by this gene is a G protein-coupled receptor and belongs to the glucagon-VIP-secretin receptor family. It binds secretin which is the most potent regulator of pancreatic bicarbonate, electrolyte and volume secretion. Secretin and its receptor are suggested to be involved in pancreatic cancer and autism. [provided by RefSeq, Jul 2008],

Nanjing BYabscience technology Co.,Ltd



matters needing attention

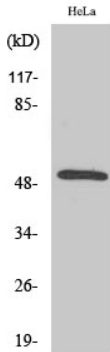
Avoid repeated freezing and thawing!

Usage suggestions

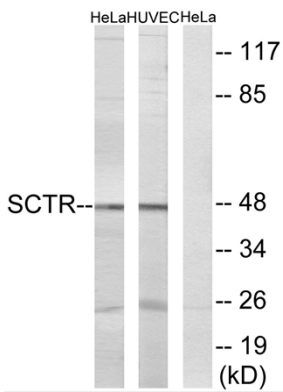
This product can be used in immunological reaction related experiments. For more information, please consult technical personnel.



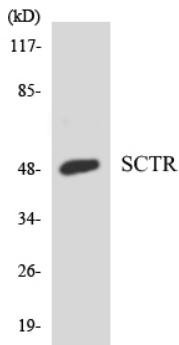
Products Images



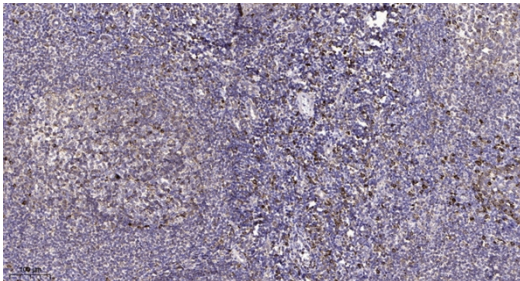
Western Blot analysis of various cells using Secretin Receptor Polyclonal Antibody diluted at 1:1000



Western blot analysis of lysates from HeLa and HUVEC cells, using SCTR Antibody. The lane on the right is blocked with the synthesized peptide.



Western blot analysis of the lysates from HeLa cells using SCTR antibody.



Immunohistochemical analysis of paraffin-embedded human tonsil. 1, Antibody was diluted at 1:200(4° overnight). 2, Tris-EDTA,pH9.0 was used for antigen retrieval. 3,Secondary antibody was diluted at 1:200(room temperature, 45min).