



P2Y4 Polyclonal Antibody

Catalog No	BYab-13653
Isotype	IgG
Reactivity	Human;Mouse;Rat
Applications	WB;IF;ELISA
Gene Name	P2RY4
Protein Name	P2Y purinoceptor 4
Immunogen	The antiserum was produced against synthesized peptide derived from human P2RY4. AA range:159-208
Specificity	P2Y4 Polyclonal Antibody detects endogenous levels of P2Y4 protein.
Formulation	Liquid in PBS containing 50% glycerol, 0.5% BSA and 0.02% sodium azide.
Source	Polyclonal, Rabbit,IgG
Purification	The antibody was affinity-purified from rabbit antiserum by affinity-chromatography using epitope-specific immunogen.
Dilution	Western Blot: 1/500 - 1/2000. Immunofluorescence: 1/200 - 1/1000. ELISA: 1/10000. Not yet tested in other applications.
Concentration	1 mg/ml
Purity	≥90%
Storage Stability	-20°C/1 year
Synonyms	P2RY4; NRU; P2Y purinoceptor 4; P2Y4; P2P; Uridine nucleotide receptor; UNR
Observed Band	41kD
Cell Pathway	Cell membrane; Multi-pass membrane protein.
Tissue Specificity	Pancreas.
Function	function:Receptor for UTP and UDP coupled to G-proteins that activate a phosphatidylinositol-calcium second messenger system. Not activated by ATP or ADP.,PTM:Phosphorylation of Ser-333 and Ser-334 is a key step in agonist-dependent desensitization and loss of surface P2RY4. This phosphorylation does not involve PKC, nor other calcium activated kinases.,similarity:Belongs to the G-protein coupled receptor 1 family.,tissue specificity:Pancreas.,
Background	The product of this gene belongs to the family of G-protein coupled receptors. This family has several receptor subtypes with different pharmacological selectivity, which overlaps in some cases, for various adenosine and uridine

Nanjing BYabscience technology Co.,Ltd



nucleotides. This receptor is responsive to uridine nucleotides, partially responsive to ATP, and not responsive to ADP. [provided by RefSeq, Jul 2008],

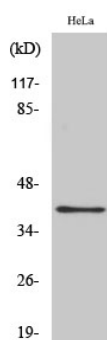
matters needing attention

Avoid repeated freezing and thawing!

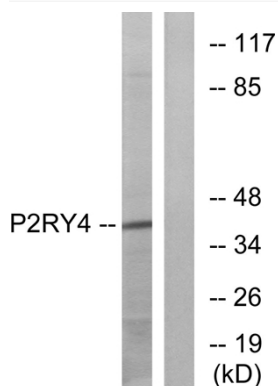
Usage suggestions

This product can be used in immunological reaction related experiments. For more information, please consult technical personnel.

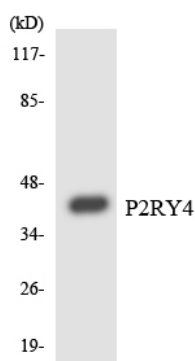
Products Images



Western Blot analysis of various cells using P2Y4 Polyclonal Antibody diluted at 1:500



Western blot analysis of lysates from HeLa cells, using P2RY4 Antibody. The lane on the right is blocked with the synthesized peptide.



Western blot analysis of the lysates from COLO205 cells using P2RY4 antibody.

Nanjing BYabscience technology Co.,Ltd