



P2Y11 Polyclonal Antibody

| | |
|---------------------------|--|
| Catalog No | BYab-13652 |
| Isotype | IgG |
| Reactivity | Human;Rat;Mouse; |
| Applications | WB;ELISA |
| Gene Name | P2RY11 |
| Protein Name | P2Y purinoceptor 11 |
| Immunogen | The antiserum was produced against synthesized peptide derived from human P2RY11. AA range:140-189 |
| Specificity | P2Y11 Polyclonal Antibody detects endogenous levels of P2Y11 protein. |
| Formulation | Liquid in PBS containing 50% glycerol, 0.5% BSA and 0.02% sodium azide. |
| Source | Polyclonal, Rabbit,IgG |
| Purification | The antibody was affinity-purified from rabbit antiserum by affinity-chromatography using epitope-specific immunogen. |
| Dilution | Western Blot: 1/500 - 1/2000. ELISA: 1/10000. Not yet tested in other applications. |
| Concentration | 1 mg/ml |
| Purity | ≥90% |
| Storage Stability | -20°C/1 year |
| Synonyms | P2RY11; P2Y purinoceptor 11; P2Y11 |
| Observed Band | 48kD |
| Cell Pathway | Cell membrane; Multi-pass membrane protein. |
| Tissue Specificity | Highest expression in liver and spleen. |
| Function | function:Receptor for ATP and ADP coupled to G-proteins that activate both phosphatidylinositol-calcium and adenylyl cyclase second messenger systems. Not activated by UTP or UDP.,induction:Increased by DMSO and retinoic acid.,miscellaneous:A putative trans-splicing which involves PPAN and P2RY11 gene regions produces a fusion protein.,similarity:Belongs to the G-protein coupled receptor 1 family.,tissue specificity:Highest expression in the spleen, lower in the small intestine., |
| Background | The product of this gene belongs to the family of G-protein coupled receptors. This family has several receptor subtypes with different pharmacological selectivity, which overlaps in some cases, for various adenosine and uridine |

Nanjing BYabscience technology Co.,Ltd



nucleotides. This receptor is coupled to the stimulation of the phosphoinositide and adenylyl cyclase pathways and behaves as a selective purinoceptor. Naturally occurring read-through transcripts, resulting from intergenic splicing between this gene and an immediately upstream gene (PPAN, encoding pater pan homolog), have been found. The PPAN-P2RY11 read-through mRNA is ubiquitously expressed and encodes a fusion protein that shares identity with each individual gene product. [provided by RefSeq, Jul 2008],

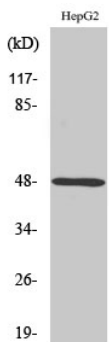
matters needing attention

Avoid repeated freezing and thawing!

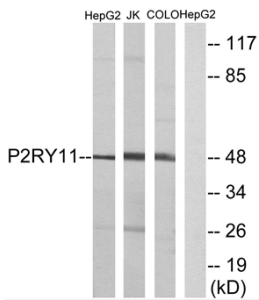
Usage suggestions

This product can be used in immunological reaction related experiments. For more information, please consult technical personnel.

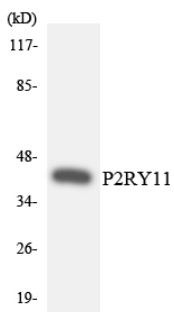
Products Images



Western Blot analysis of various cells using P2Y11 Polyclonal Antibody



Western blot analysis of lysates from HepG2, Jurkat, and COLO cells, using P2RY11 Antibody. The lane on the right is blocked with the synthesized peptide.



Western blot analysis of the lysates from K562 cells using P2RY11 antibody.

Nanjing BYabscience technology Co.,Ltd