



Olfactory receptor 10J5 Polyclonal Antibody

Catalog No	BYab-13451
Isotype	IgG
Reactivity	Human;Rat;Mouse;
Applications	IF;ELISA
Gene Name	OR10J5
Protein Name	Olfactory receptor 10J5
Immunogen	The antiserum was produced against synthesized peptide derived from human OR10J5. AA range:220-269
Specificity	Olfactory receptor 10J5 Polyclonal Antibody detects endogenous levels of Olfactory receptor 10J5 protein.
Formulation	Liquid in PBS containing 50% glycerol, 0.5% BSA and 0.02% sodium azide.
Source	Polyclonal, Rabbit,IgG
Purification	The antibody was affinity-purified from rabbit antiserum by affinity-chromatography using epitope-specific immunogen.
Dilution	Immunofluorescence: 1/200 - 1/1000. ELISA: 1/40000. Not yet tested in other applications.
Concentration	1 mg/ml
Purity	≥90%
Storage Stability	-20°C/1 year
Synonyms	
Observed Band	
Cell Pathway	
Tissue Specificity	
Function	cell surface receptor linked signal transduction, G-protein coupled receptor protein signaling pathway, sensory perception, sensory perception of chemical stimulus, sensory perception of smell, neurological system process,cognition,
Background	Olfactory receptors interact with odorant molecules in the nose, to initiate a neuronal response that triggers the perception of a smell. The olfactory receptor proteins are members of a large family of G-protein-coupled receptors (GPCR) arising from single coding-exon genes. Olfactory receptors share a 7-transmembrane domain structure with many neurotransmitter and hormone receptors and are responsible for the recognition and G protein-mediated transduction of odorant signals. The olfactory receptor gene family is the largest in

Nanjing BYabscience technology Co.,Ltd



the genome. The nomenclature assigned to the olfactory receptor genes and proteins for this organism is independent of other organisms.

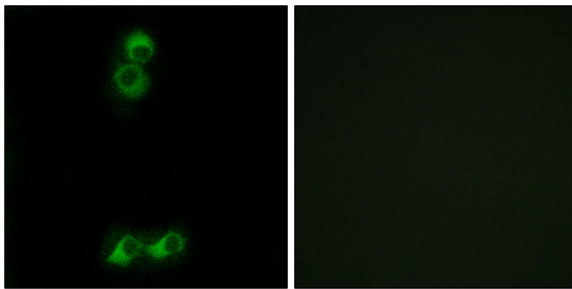
matters needing attention

Avoid repeated freezing and thawing!

Usage suggestions

This product can be used in immunological reaction related experiments. For more information, please consult technical personnel.

Products Images



Immunofluorescence analysis of MCF7 cells, using OR10J5 Antibody. The picture on the right is blocked with the synthesized peptide.