



MRGX3 Polyclonal Antibody

Catalog No	BYab-13426
Isotype	IgG
Reactivity	Human;Rat;Mouse;
Applications	WB;ELISA;IHC
Gene Name	MRGPRX3
Protein Name	Mas-related G-protein coupled receptor member X3
Immunogen	The antiserum was produced against synthesized peptide derived from human MRGX3. AA range:99-148
Specificity	MRGX3 Polyclonal Antibody detects endogenous levels of MRGX3 protein.
Formulation	Liquid in PBS containing 50% glycerol, 0.5% BSA and 0.02% sodium azide.
Source	Polyclonal, Rabbit,IgG
Purification	The antibody was affinity-purified from rabbit antiserum by affinity-chromatography using epitope-specific immunogen.
Dilution	WB 1:500-2000;IHC-p 1:50-300; ELISA 2000-20000
Concentration	1 mg/ml
Purity	≥90%
Storage Stability	-20°C/1 year
Synonyms	MRGPRX3; MRGX3; SNSR1; SNSR2; Mas-related G-protein coupled receptor member X3; Sensory neuron-specific G-protein coupled receptor 1/2
Observed Band	34kD
Cell Pathway	Cell membrane; Multi-pass membrane protein.
Tissue Specificity	Uniquely localized in a subset of small dorsal root and trigeminal sensory neurons.
Function	function:Orphan receptor. Probably involved in the function of nociceptive neurons. May regulate nociceptor function and/or development, including the sensation or modulation of pain. Potently activated by enkephalins.,similarity:Belongs to the G-protein coupled receptor 1 family. Mas subfamily.,tissue specificity:Uniquely localized in a subset of small dorsal root and trigeminal sensory neurons.,
Background	This gene encodes a member of the mas-related/sensory neuron specific subfamily of G protein coupled receptors. The encoded protein may be involved in sensory neuron regulation and in the modulation of pain. [provided by RefSeq, Oct

Nanjing BYabscience technology Co.,Ltd



2009],

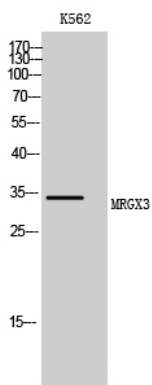
matters needing attention

Avoid repeated freezing and thawing!

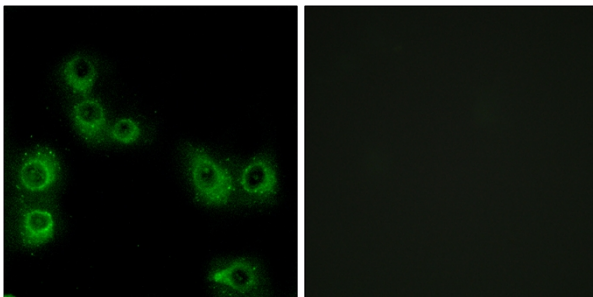
Usage suggestions

This product can be used in immunological reaction related experiments. For more information, please consult technical personnel.

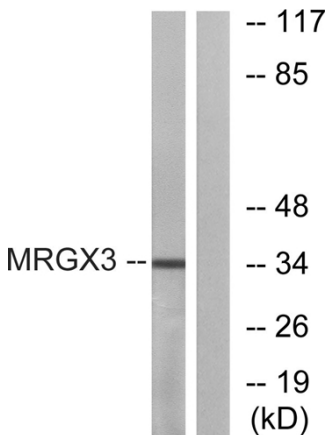
Products Images



Western Blot analysis of K562 cells using MRGX3 Polyclonal Antibody

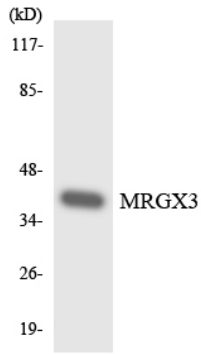


Immunofluorescence analysis of MCF7 cells, using MRGX3 Antibody. The picture on the right is blocked with the synthesized peptide.

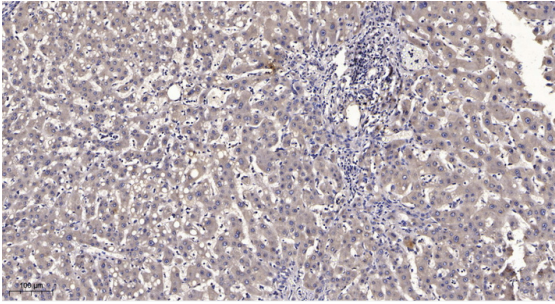


Western blot analysis of lysates from K562 cells, using MRGX3 Antibody. The lane on the right is blocked with the synthesized peptide.

Nanjing BYabscience technology Co.,Ltd



Western blot analysis of the lysates from 293 cells using MRGX3 antibody.



Immunohistochemical analysis of paraffin-embedded human liver cancer. 1, Antibody was diluted at 1:200(4° overnight). 2, Tris-EDTA,pH9.0 was used for antigen retrieval. 3, Secondary antibody was diluted at 1:200(room temperature, 45min).