



# mGluR7 Polyclonal Antibody

<b>Catalog No</b>	BYab-13420
<b>Isotype</b>	IgG
<b>Reactivity</b>	Human;Mouse;Rat
<b>Applications</b>	WB;ELISA;IHC
<b>Gene Name</b>	GRM7
<b>Protein Name</b>	Metabotropic glutamate receptor 7
<b>Immunogen</b>	The antiserum was produced against synthesized peptide derived from human GRM7. AA range:351-400
<b>Specificity</b>	mGluR7 Polyclonal Antibody detects endogenous levels of mGluR7 protein.
<b>Formulation</b>	Liquid in PBS containing 50% glycerol, 0.5% BSA and 0.02% sodium azide.
<b>Source</b>	Polyclonal, Rabbit,IgG
<b>Purification</b>	The antibody was affinity-purified from rabbit antiserum by affinity-chromatography using epitope-specific immunogen.
<b>Dilution</b>	WB 1:500-2000;IHC-p 1:50-300; ELISA 2000-20000
<b>Concentration</b>	1 mg/ml
<b>Purity</b>	≥90%
<b>Storage Stability</b>	-20°C/1 year
<b>Synonyms</b>	GRM7; GPRC1G; MGLUR7; Metabotropic glutamate receptor 7; mGluR7
<b>Observed Band</b>	102kD
<b>Cell Pathway</b>	Cell membrane ; Multi-pass membrane protein .
<b>Tissue Specificity</b>	Expressed in many areas of the brain, especially in the cerebral cortex, hippocampus, and cerebellum. Expression of GRM7 isoforms in non-neuronal tissues appears to be restricted to isoform 3 and isoform 4.
<b>Function</b>	function:Receptor for glutamate. The activity of this receptor is mediated by a G-protein that inhibits adenylate cyclase activity.,similarity:Belongs to the G-protein coupled receptor 3 family.,subunit:Interacts with PICK1.,tissue specificity:Expressed in many areas of the brain, especially in the cerebral cortex, hippocampus, and cerebellum. Expression of GRM7 isoforms in non-neuronal tissues appears to be restricted to isoform 3 and isoform 4.,
<b>Background</b>	glutamate metabotropic receptor 7(GRM7) Homo sapiens L-glutamate is the major excitatory neurotransmitter in the central nervous system, and it activates both ionotropic and metabotropic glutamate receptors. Glutamatergic

Nanjing BYabscience technology Co.,Ltd



neurotransmission is involved in most aspects of normal brain function and can be perturbed in many neuropathologic conditions. The metabotropic glutamate receptors are a family of G protein-coupled receptors that have been divided into three groups on the basis of sequence homology, putative signal transduction mechanisms, and pharmacologic properties. Group I includes GRM1 and GRM5, and these receptors have been shown to activate phospholipase C. Group II includes GRM2 and GRM3, while Group III includes GRM4, GRM6, GRM7 and GRM8. Group II and III receptors are linked to the inhibition of the cyclic AMP cascade but differ in their agonist selectivities. Multiple transcript variants encoding different isoforms have been found

**matters needing attention**

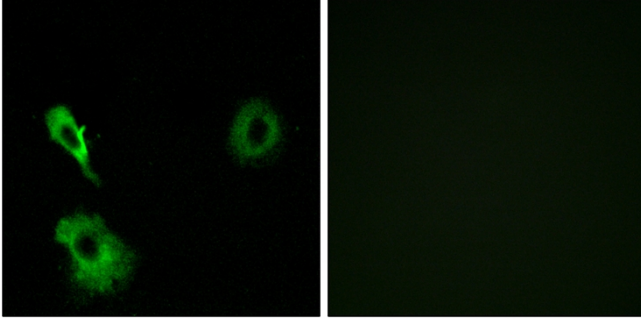
Avoid repeated freezing and thawing!

**Usage suggestions**

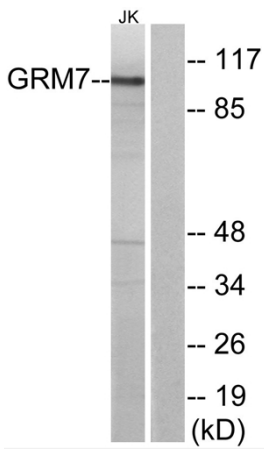
This product can be used in immunological reaction related experiments. For more information, please consult technical personnel.



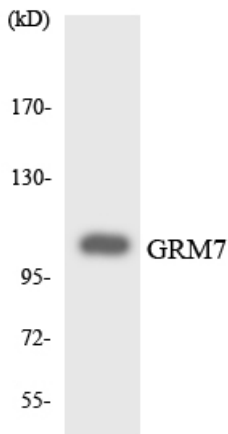
## Products Images



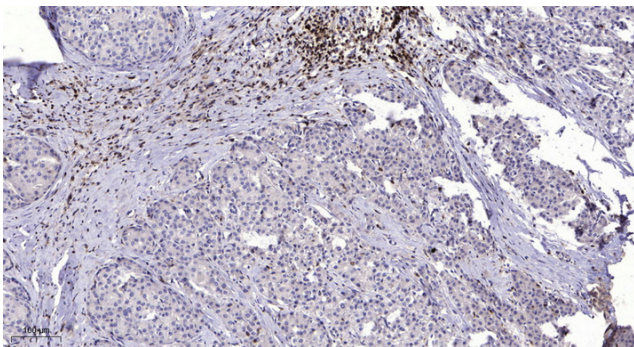
Immunofluorescence analysis of A549 cells, using GRM7 Antibody. The picture on the right is blocked with the synthesized peptide.



Western blot analysis of lysates from Jurkat cells, using GRM7 Antibody. The lane on the right is blocked with the synthesized peptide.



Western blot analysis of the lysates from HUVEC cells using GRM7 antibody.



Immunohistochemical analysis of paraffin-embedded human liver cancer. 1, Antibody was diluted at 1:200(4° overnight). 2, Tris-EDTA, pH9.0 was used for antigen retrieval. 3, Secondary antibody was diluted at 1:200(room temperature, 45min).

Nanjing BYabscience technology Co.,Ltd



**Nanjing BYabscience technology Co.,Ltd**

网址: [www.njbybio.com](http://www.njbybio.com)

官方热线: 025-5229-8998

监督电话: 15950492658