



mGluR5 Polyclonal Antibody

Catalog No	BYab-13419
Isotype	IgG
Reactivity	Human;Mouse;Rat
Applications	WB;IHC;IF;ELISA
Gene Name	GRM5
Protein Name	Metabotropic glutamate receptor 5
Immunogen	The antiserum was produced against synthesized peptide derived from human GRM5. AA range:21-70
Specificity	mGluR5 Polyclonal Antibody detects endogenous levels of mGluR5 protein.
Formulation	Liquid in PBS containing 50% glycerol, 0.5% BSA and 0.02% sodium azide.
Source	Polyclonal, Rabbit,IgG
Purification	The antibody was affinity-purified from rabbit antiserum by affinity-chromatography using epitope-specific immunogen.
Dilution	Western Blot: 1/500 - 1/2000. Immunohistochemistry: 1/100 - 1/300. Immunofluorescence: 1/200 - 1/1000. ELISA: 1/10000. Not yet tested in other applications.
Concentration	1 mg/ml
Purity	≥90%
Storage Stability	-20°C/1 year
Synonyms	GRM5; GPRC1E; MGLUR5; Metabotropic glutamate receptor 5; mGluR5
Observed Band	130kD
Cell Pathway	Cell membrane ; Multi-pass membrane protein .
Tissue Specificity	Brain,
Function	function:Receptor for glutamate. The activity of this receptor is mediated by a G-protein that activates a phosphatidylinositol-calcium second messenger system and generates a calcium-activated chloride current.,similarity:Belongs to the G-protein coupled receptor 3 family.,subunit:The PPXXF motif binds HOMER1, HOMER2 and HOMER3. Interacts with SIAH1, RYR1, RYR2, ITPR1, SHANK1, SHANK3 and GRASP.,
Background	glutamate metabotropic receptor 5(GRM5) Homo sapiens This gene encodes a member of the G-protein coupled receptor 3 protein family. The encoded protein is a metabotropic glutamate receptor, whose signaling activates a

Nanjing BYabscience technology Co.,Ltd



phosphatidylinositol-calcium second messenger system. This protein may be involved in the regulation of neural network activity and synaptic plasticity. Glutamatergic neurotransmission is involved in most aspects of normal brain function and can be perturbed in many neuropathologic conditions. A pseudogene of this gene has been defined on chromosome 11. Alternative splicing results in multiple transcript variants. [provided by RefSeq, May 2014],

matters needing attention

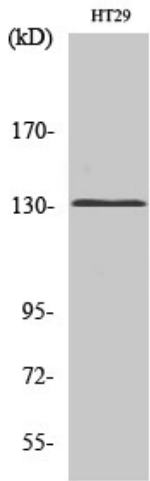
Avoid repeated freezing and thawing!

Usage suggestions

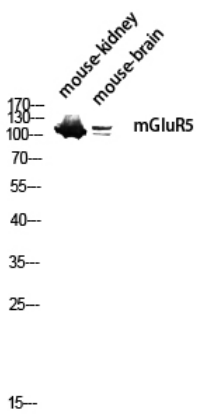
This product can be used in immunological reaction related experiments. For more information, please consult technical personnel.



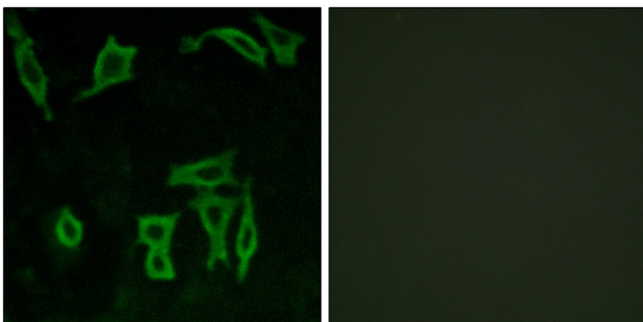
Products Images



Western Blot analysis of various cells using mGluR5 Polyclonal Antibody diluted at 1:1000

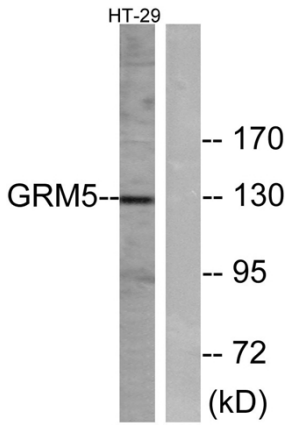


Western blot analysis of mouse-kidney mouse-brain lysis using mGluR5 antibody. Antibody was diluted at 1:1000

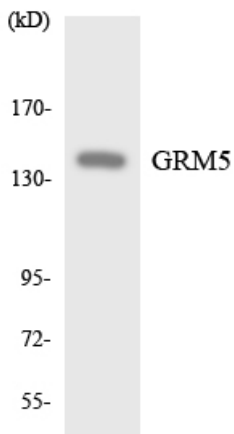


Immunofluorescence analysis of LOVO cells, using GRM5 Antibody. The picture on the right is blocked with the synthesized peptide.

Nanjing BYabscience technology Co.,Ltd



Western blot analysis of lysates from HT-29 cells, using GRM5 Antibody. The lane on the right is blocked with the synthesized peptide.



Western blot analysis of the lysates from HeLa cells using GRM5 antibody.