



mGluR1 Polyclonal Antibody

Catalog No	BYab-13417
Isotype	IgG
Reactivity	Human;Mouse;Rat
Applications	IHC;IF;ELISA
Gene Name	GRM1
Protein Name	Metabotropic glutamate receptor 1
Immunogen	The antiserum was produced against synthesized peptide derived from human GRM1. AA range:251-300
Specificity	mGluR1 Polyclonal Antibody detects endogenous levels of mGluR1 protein.
Formulation	Liquid in PBS containing 50% glycerol, 0.5% BSA and 0.02% sodium azide.
Source	Polyclonal, Rabbit,IgG
Purification	The antibody was affinity-purified from rabbit antiserum by affinity-chromatography using epitope-specific immunogen.
Dilution	IHC: 1/100 - 1/300. ELISA: 1/5000.. IF 1:50-200
Concentration	1 mg/ml
Purity	≥90%
Storage Stability	-20°C/1 year
Synonyms	GRM1; GPRC1A; MGLUR1; Metabotropic glutamate receptor 1; mGluR1
Observed Band	
Cell Pathway	Cell membrane ; Multi-pass membrane protein .
Tissue Specificity	Detected in brain.
Function	function:Receptor for glutamate. The activity of this receptor is mediated by a G-protein that activates a phosphatidylinositol-calcium second messenger system. May participate in the central action of glutamate in the CNS, such as long-term potentiation in the hippocampus and long-term depression in the cerebellum.,similarity:Belongs to the G-protein coupled receptor 3 family.,subunit:Homodimer; disulfide-linked. The PPXXF motif binds HOMER1, HOMER2 and HOMER3. Interacts with SIAH1, RYR1, RYR2, ITPR1, SHANK1, SHANK3 and GRASP.,
Background	glutamate metabotropic receptor 1(GRM1) Homo sapiens This gene encodes a metabotropic glutamate receptor that functions by activating phospholipase C.

Nanjing BYabscience technology Co.,Ltd



L-glutamate is the major excitatory neurotransmitter in the central nervous system and activates both ionotropic and metabotropic glutamate receptors. Glutamatergic neurotransmission is involved in most aspects of normal brain function and can be perturbed in many neuropathologic conditions. The canonical alpha isoform of the encoded protein is a disulfide-linked homodimer whose activity is mediated by a G-protein-coupled phosphatidylinositol-calcium second messenger system. This gene may be associated with many disease states, including schizophrenia, bipolar disorder, depression, and breast cancer. Alternative splicing results in multiple transcript variants encoding different isoforms. [provided by RefSeq, May 2013],

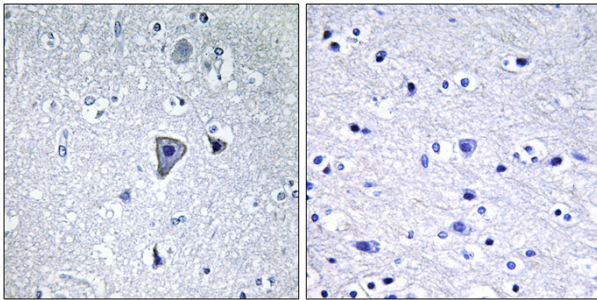
matters needing attention

Avoid repeated freezing and thawing!

Usage suggestions

This product can be used in immunological reaction related experiments. For more information, please consult technical personnel.

Products Images



Immunohistochemistry analysis of paraffin-embedded human brain tissue, using GRM1 Antibody. The picture on the right is blocked with the synthesized peptide.