



MEL-1B-R Polyclonal Antibody

Catalog No	BYab-13413
Isotype	IgG
Reactivity	Human;Rat;Mouse;
Applications	WB;IHC
Gene Name	MTNR1B
Protein Name	Melatonin receptor type 1B
Immunogen	The antiserum was produced against synthesized peptide derived from human MTR1B. AA range:301-350
Specificity	MEL-1B-R Polyclonal Antibody detects endogenous levels of MEL-1B-R protein.
Formulation	Liquid in PBS containing 50% glycerol, 0.5% BSA and 0.02% sodium azide.
Source	Polyclonal, Rabbit,IgG
Purification	The antibody was affinity-purified from rabbit antiserum by affinity-chromatography using epitope-specific immunogen.
Dilution	WB 1:500-2000;IHC-p 1:50-300
Concentration	1 mg/ml
Purity	≥90%
Storage Stability	-20°C/1 year
Synonyms	MTNR1B; Melatonin receptor type 1B; Mel-1B-R; Mel1b receptor
Observed Band	40kD
Cell Pathway	Cell membrane; Multi-pass membrane protein.
Tissue Specificity	Expressed in retina and less in brain and hippocampus.
Function	function:High affinity receptor for melatonin. Likely to mediate the reproductive and circadian actions of melatonin. The activity of this receptor is mediated by pertussis toxin sensitive G proteins that inhibit adenylate cyclase activity.,online information:Melatonin receptor entry,similarity:Belongs to the G-protein coupled receptor 1 family.,tissue specificity:Expressed in retina and less in brain and hippocampus.,
Background	This gene encodes one of two high affinity forms of a receptor for melatonin, the primary hormone secreted by the pineal gland. This gene product is an integral membrane protein that is a G-protein coupled, 7-transmembrane receptor. It is found primarily in the retina and brain although this detection requires RT-PCR. It

Nanjing BYabscience technology Co.,Ltd



is thought to participate in light-dependent functions in the retina and may be involved in the neurobiological effects of melatonin. [provided by RefSeq, Jul 2008],

matters needing attention

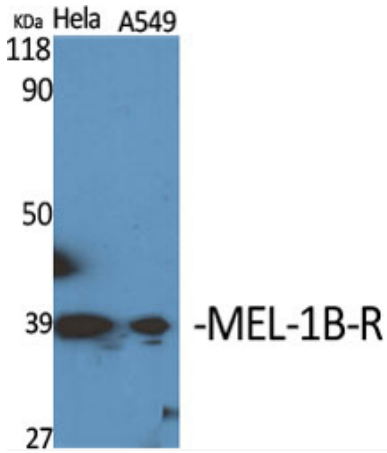
Avoid repeated freezing and thawing!

Usage suggestions

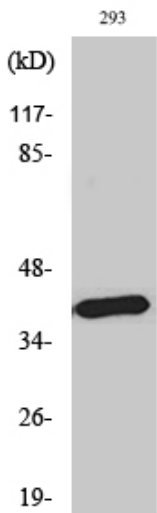
This product can be used in immunological reaction related experiments. For more information, please consult technical personnel.



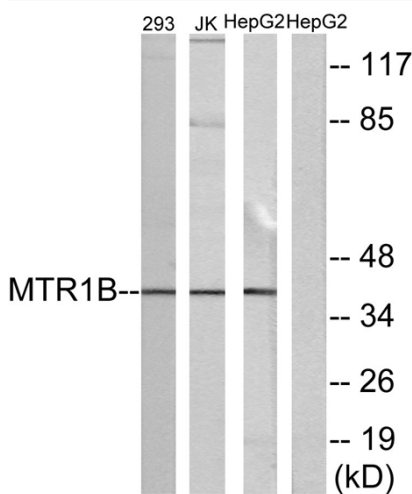
Products Images



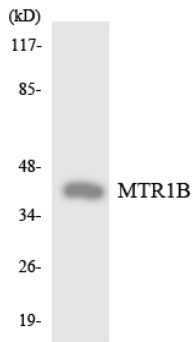
Western Blot analysis of various cells using MEL-1B-R Polyclonal Antibody diluted at 1:1000



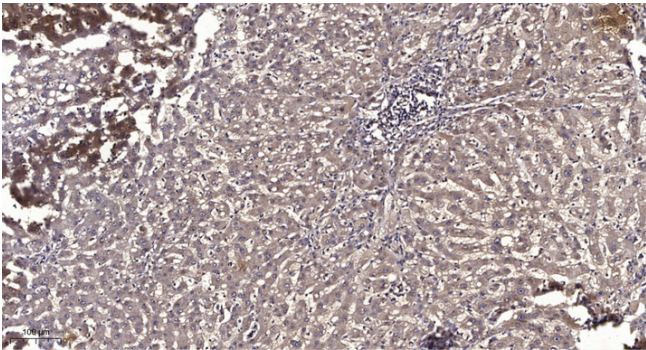
Western Blot analysis of HepG2 cells using MEL-1B-R Polyclonal Antibody diluted at 1:1000



Western blot analysis of lysates from 293, Jurkat, and HepG2 cells, using MTR1B Antibody. The lane on the right is blocked with the synthesized peptide.



Western blot analysis of the lysates from HeLa cells using MTR1B antibody.



Immunohistochemical analysis of paraffin-embedded human liver cancer. 1, Antibody was diluted at 1:200(4° overnight). 2, Tris-EDTA,pH9.0 was used for antigen retrieval. 3,Secondary antibody was diluted at 1:200(room temperature, 45min).