



MEL-1A-R Polyclonal Antibody

Catalog No	BYab-13412
Isotype	IgG
Reactivity	Human;Mouse;Rat
Applications	WB;ELISA;IHC
Gene Name	MTNR1A
Protein Name	Melatonin receptor type 1A
Immunogen	The antiserum was produced against synthesized peptide derived from human MTR1A. AA range:191-240
Specificity	MEL-1A-R Polyclonal Antibody detects endogenous levels of MEL-1A-R protein.
Formulation	Liquid in PBS containing 50% glycerol, 0.5% BSA and 0.02% sodium azide.
Source	Polyclonal, Rabbit,IgG
Purification	The antibody was affinity-purified from rabbit antiserum by affinity-chromatography using epitope-specific immunogen.
Dilution	WB 1:500-2000;IHC-p 1:50-300; ELISA 2000-20000
Concentration	1 mg/ml
Purity	≥90%
Storage Stability	-20°C/1 year
Synonyms	MTNR1A; Melatonin receptor type 1A; Mel-1A-R; Mel1a receptor
Observed Band	
Cell Pathway	Cell membrane; Multi-pass membrane protein.
Tissue Specificity	Expressed in hypophyseal pars tuberalis and hypothalamic suprachiasmatic nuclei (SCN). Hippocampus.
Function	function:High affinity receptor for melatonin. Likely to mediate the reproductive and circadian actions of melatonin. The activity of this receptor is mediated by pertussis toxin sensitive G proteins that inhibit adenylate cyclase activity.,online information:Melatonin receptor entry,similarity:Belongs to the G-protein coupled receptor 1 family.,tissue specificity:Expressed in hypophyseal pars tuberalis and hypothalamic suprachiasmatic nuclei (SCN). Hippocampus.,
Background	This gene encodes one of two high affinity forms of a receptor for melatonin, the primary hormone secreted by the pineal gland. This receptor is a G-protein coupled, 7-transmembrane receptor that is responsible for melatonin effects on mammalian circadian rhythm and reproductive alterations affected by day length.

Nanjing BYabscience technology Co.,Ltd



The receptor is an integral membrane protein that is readily detectable and localized to two specific regions of the brain. The hypothalamic suprachiasmatic nucleus appears to be involved in circadian rhythm while the hypophysial pars tuberalis may be responsible for the reproductive effects of melatonin. [provided by RefSeq, Jul 2008],

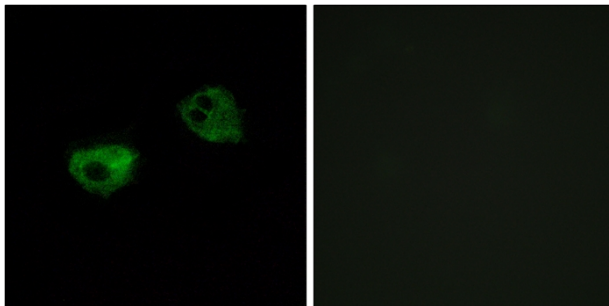
matters needing attention

Avoid repeated freezing and thawing!

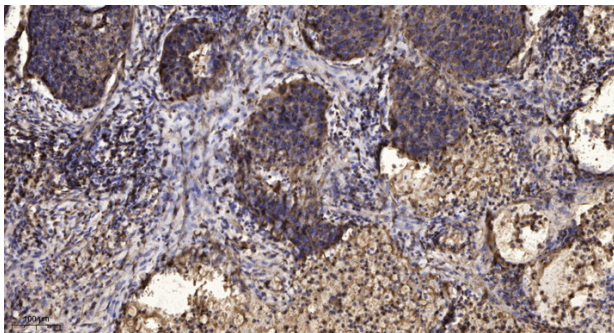
Usage suggestions

This product can be used in immunological reaction related experiments. For more information, please consult technical personnel.

Products Images



Immunofluorescence analysis of HepG2 cells, using MTR1A Antibody. The picture on the right is blocked with the synthesized peptide.



Immunohistochemical analysis of paraffin-embedded human Squamous cell carcinoma of lung. 1, Antibody was diluted at 1:200(4° overnight). 2, Tris-EDTA,pH9.0 was used for antigen retrieval. 3,Secondary antibody was diluted at 1:200(room temperature, 45min).