



MC4-R Polyclonal Antibody

Catalog No	BYab-13405
Isotype	IgG
Reactivity	Human;Mouse;Rat
Applications	WB;IHC;IF;ELISA
Gene Name	MC4R
Protein Name	Melanocortin receptor 4
Immunogen	The antiserum was produced against synthesized peptide derived from human MC4R. AA range:281-330
Specificity	MC4-R Polyclonal Antibody detects endogenous levels of MC4-R protein.
Formulation	Liquid in PBS containing 50% glycerol, 0.5% BSA and 0.02% sodium azide.
Source	Polyclonal, Rabbit,IgG
Purification	The antibody was affinity-purified from rabbit antiserum by affinity-chromatography using epitope-specific immunogen.
Dilution	WB: 1/500 - 1/2000. IHC: 1/100 - 1/300. ELISA: 1/40000.. IF 1:50-200
Concentration	1 mg/ml
Purity	≥90%
Storage Stability	-20°C/1 year
Synonyms	MC4R; Melanocortin receptor 4; MC4-R
Observed Band	37kD
Cell Pathway	Cell membrane ; Multi-pass membrane protein .
Tissue Specificity	Brain, placental, and gut tissues.
Function	disease:Defects in MC4R are a cause of autosomal dominant obesity [MIM:601665].,function:Receptor specific to the heptapeptide core common to adrenocorticotrophic hormone and alpha-, beta-, and gamma-MSH. This receptor is mediated by G proteins that stimulate adenylate cyclase.,online information:Melanocortin receptor entry,similarity:Belongs to the G-protein coupled receptor 1 family.,subunit:Interacts with ATRNL1.,tissue specificity:Brain, placental, and gut tissues.,
Background	The protein encoded by this gene is a membrane-bound receptor and member of the melanocortin receptor family. The encoded protein interacts with adrenocorticotrophic and MSH hormones and is mediated by G proteins. This is an

Nanjing BYabscience technology Co.,Ltd



intronless gene. Defects in this gene are a cause of autosomal dominant obesity. [provided by RefSeq, Jan 2010],

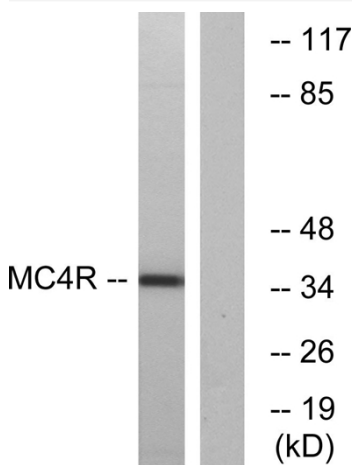
matters needing attention

Avoid repeated freezing and thawing!

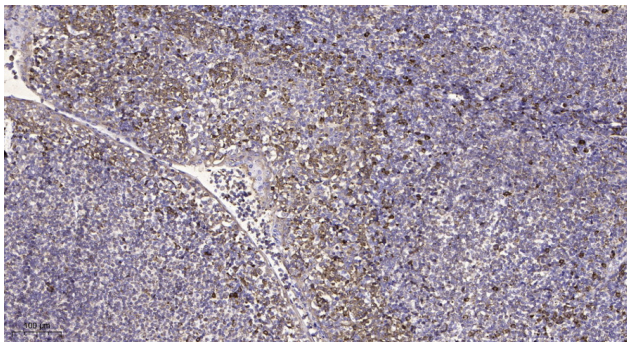
Usage suggestions

This product can be used in immunological reaction related experiments. For more information, please consult technical personnel.

Products Images



Western blot analysis of lysates from MCF-7 cells, using MC4R Antibody. The lane on the right is blocked with the synthesized peptide.



Immunohistochemical analysis of paraffin-embedded human tonsil. 1, Antibody was diluted at 1:200(4° overnight). 2, Tris-EDTA,pH9.0 was used for antigen retrieval. 3,Secondary antibody was diluted at 1:200(room temperature, 45min).