



# LT $\beta$ R Polyclonal Antibody

<b>Catalog No</b>	BYab-13401
<b>Isotype</b>	IgG
<b>Reactivity</b>	Human;Mouse
<b>Applications</b>	WB;IF;ELISA
<b>Gene Name</b>	LTBR
<b>Protein Name</b>	Tumor necrosis factor receptor superfamily member 3
<b>Immunogen</b>	The antiserum was produced against synthesized peptide derived from human LTBR. AA range:11-60
<b>Specificity</b>	LT $\beta$ R Polyclonal Antibody detects endogenous levels of LT $\beta$ R protein.
<b>Formulation</b>	Liquid in PBS containing 50% glycerol, 0.5% BSA and 0.02% sodium azide.
<b>Source</b>	Polyclonal, Rabbit,IgG
<b>Purification</b>	The antibody was affinity-purified from rabbit antiserum by affinity-chromatography using epitope-specific immunogen.
<b>Dilution</b>	Western Blot: 1/500 - 1/2000. Immunofluorescence: 1/200 - 1/1000. ELISA: 1/40000. Not yet tested in other applications.
<b>Concentration</b>	1 mg/ml
<b>Purity</b>	$\geq 90\%$
<b>Storage Stability</b>	-20°C/1 year
<b>Synonyms</b>	LTBR; D12S370; TNFCR; TNFR3; TNFRSF3; Tumor necrosis factor receptor superfamily member 3; Lymphotoxin-beta receptor; Tumor necrosis factor C receptor; Tumor necrosis factor receptor 2-related protein; Tumor necrosis factor receptor type II
<b>Observed Band</b>	50kD
<b>Cell Pathway</b>	Membrane; Single-pass type I membrane protein.
<b>Tissue Specificity</b>	Liver,Lung,
<b>Function</b>	function:Receptor for the heterotrimeric lymphotoxin containing LTA and LTB, and for TNFS14/LIGHT. Promotes apoptosis via TRAF3 and TRAF5. May play a role in the development of lymphoid organs.,similarity:Contains 4 TNFR-Cys repeats.,subunit:Self-associates. Associates with TRAF3, TRAF4 and TRAF5. Interacts with HCV core protein.,

Nanjing BYabscience technology Co.,Ltd



**Background**

lymphotoxin beta receptor(LTBR) Homo sapiens This gene encodes a member of the tumor necrosis factor receptor superfamily. The major ligands of this receptor include lymphotoxin alpha/beta and tumor necrosis factor ligand superfamily member 14. The encoded protein plays a role in signalling during the development of lymphoid and other organs, lipid metabolism, immune response, and programmed cell death. Activity of this receptor has also been linked to carcinogenesis. Alternatively spliced transcript variants encoding multiple isoforms have been observed. [provided by RefSeq, Aug 2012],

**matters needing attention**

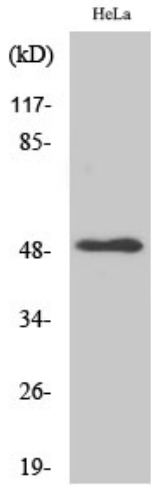
Avoid repeated freezing and thawing!

**Usage suggestions**

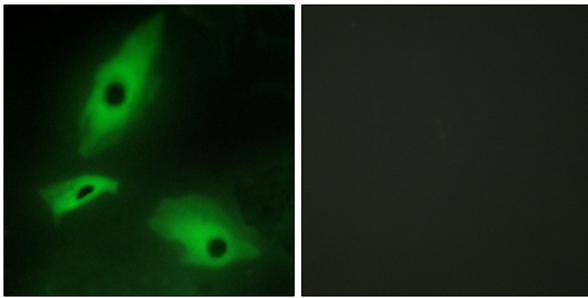
This product can be used in immunological reaction related experiments. For more information, please consult technical personnel.



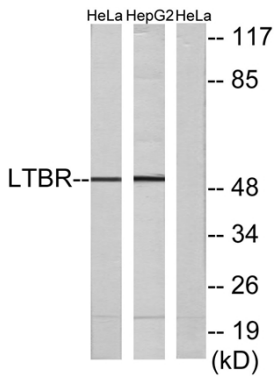
## Products Images



Western Blot analysis of various cells using LTBR Polyclonal Antibody



Immunofluorescence analysis of HeLa cells, using LTBR Antibody. The picture on the right is blocked with the synthesized peptide.



Western blot analysis of lysates from HeLa and HepG2 cells, using LTBR Antibody. The lane on the right is blocked with the synthesized peptide.