



LTB4DH Polyclonal Antibody

Catalog No	BYab-13399
Isotype	IgG
Reactivity	Human;Rat;Mouse;
Applications	WB;ELISA
Gene Name	PTGR1
Protein Name	Prostaglandin reductase 1
Immunogen	The antiserum was produced against synthesized peptide derived from human PTGR1. AA range:75-124
Specificity	LTB4DH Polyclonal Antibody detects endogenous levels of LTB4DH protein.
Formulation	Liquid in PBS containing 50% glycerol, 0.5% BSA and 0.02% sodium azide.
Source	Polyclonal, Rabbit,IgG
Purification	The antibody was affinity-purified from rabbit antiserum by affinity-chromatography using epitope-specific immunogen.
Dilution	Western Blot: 1/500 - 1/2000. ELISA: 1/5000. Not yet tested in other applications.
Concentration	1 mg/ml
Purity	≥90%
Storage Stability	-20°C/1 year
Synonyms	PTGR1; LTB4DH; Prostaglandin reductase 1; PRG-1; 15-oxoprostaglandin 13-reductase; NADP-dependent leukotriene B4 12-hydroxydehydrogenase
Observed Band	36kD
Cell Pathway	Cytoplasm .
Tissue Specificity	High expression in the kidney, liver, and intestine but not in leukocytes.
Function	catalytic activity:11-alpha-hydroxy-9,15-dioxoprost-5-enoate + NAD(P)(+) = (5Z)-(13E)-11-alpha-hydroxy-9,15-dioxoprost-5,13-dienoate + NAD(P)H.;catalytic activity:n-alkanal + NAD(P)(+) = alk-2-enal + NAD(P)H.;function:Functions as 15-oxo-prostaglandin 13-reductase and acts on 15-oxo-PGE1, 15-oxo-PGE2 and 15-oxo-PGE2-alpha. Has no activity towards PGE1, PGE2 and PGE2-alpha (By similarity). Catalyzes the conversion of leukotriene B4 into its biologically less active metabolite, 12-oxo-leukotriene B4. This is an initial and key step of metabolic inactivation of leukotriene B4.;similarity:Belongs to the NADP-dependent oxidoreductase L4BD family.;subunit:Monomer or homodimer.;tissue specificity:High expression in the

Nanjing BYabscience technology Co.,Ltd



kidney, liver, and intestine but not in leukocytes.,

Background

This gene encodes an enzyme that is involved in the inactivation of the chemotactic factor, leukotriene B4. The encoded protein specifically catalyzes the NADP+ dependent conversion of leukotriene B4 to 12-oxo-leukotriene B4. A pseudogene of this gene is found on chromosome 1. Alternative splicing results in multiple transcript variants. [provided by RefSeq, Mar 2009],

matters needing attention

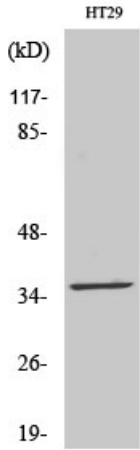
Avoid repeated freezing and thawing!

Usage suggestions

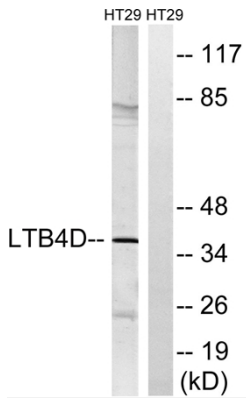
This product can be used in immunological reaction related experiments. For more information, please consult technical personnel.



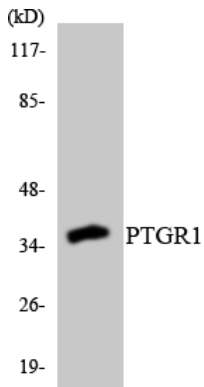
Products Images



Western Blot analysis of various cells using LTB4DH Polyclonal Antibody



Western blot analysis of lysates from HT-29 cells, using PTGR1 Antibody. The lane on the right is blocked with the synthesized peptide.



Western blot analysis of the lysates from 293 cells using PTGR1 antibody.