



LGR6 Polyclonal Antibody

Catalog No	BYab-13393
Isotype	IgG
Reactivity	Human;Rat;Mouse;
Applications	WB;IHC
Gene Name	LGR6
Protein Name	Leucine-rich repeat-containing G-protein coupled receptor 6
Immunogen	The antiserum was produced against synthesized peptide derived from human LGR6. AA range:471-520
Specificity	LGR6 Polyclonal Antibody detects endogenous levels of LGR6 protein.
Formulation	Liquid in PBS containing 50% glycerol, 0.5% BSA and 0.02% sodium azide.
Source	Polyclonal, Rabbit,IgG
Purification	The antibody was affinity-purified from rabbit antiserum by affinity-chromatography using epitope-specific immunogen.
Dilution	WB 1:500-2000;IHC-p 1:50-300
Concentration	1 mg/ml
Purity	≥90%
Storage Stability	-20°C/1 year
Synonyms	LGR6; Leucine-rich repeat-containing G-protein coupled receptor 6
Observed Band	104kD
Cell Pathway	Cell membrane ; Multi-pass membrane protein .
Tissue Specificity	Mammary gland,
Function	function:Orphan receptor.,PTM:Phosphorylated upon DNA damage, probably by ATM or ATR.,similarity:Belongs to the G-protein coupled receptor 1 family.,similarity:Contains 16 LRR (leucine-rich) repeats.,
Background	This gene encodes a member of the leucine-rich repeat-containing subgroup of the G protein-coupled 7-transmembrane protein superfamily. The encoded protein is a glycoprotein hormone receptor with a large N-terminal extracellular domain that contains leucine-rich repeats important for the formation of a horseshoe-shaped interaction motif for ligand binding. Alternative splicing of this gene results in multiple transcript variants. [provided by RefSeq, Jul 2008],

Nanjing BYabscience technology Co.,Ltd



matters needing attention

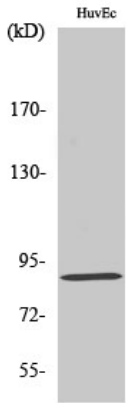
Avoid repeated freezing and thawing!

Usage suggestions

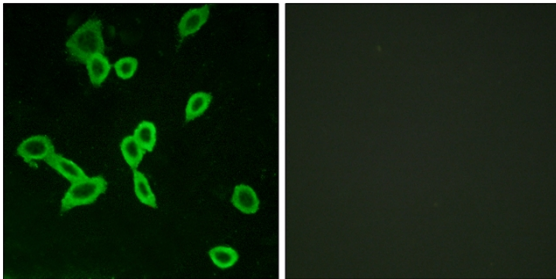
This product can be used in immunological reaction related experiments. For more information, please consult technical personnel.



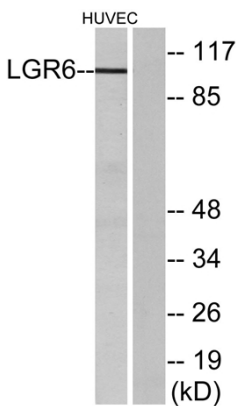
Products Images



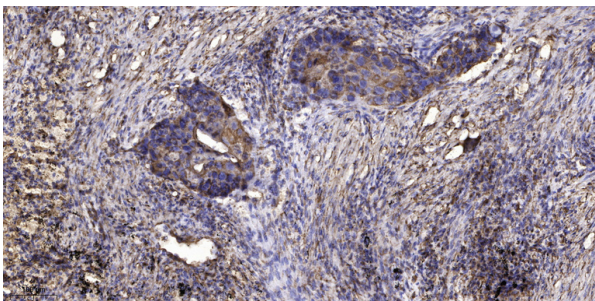
Western Blot analysis of various cells using LGR6 Polyclonal Antibody diluted at 1:500



Immunofluorescence analysis of LOVO cells, using LGR6 Antibody. The picture on the right is blocked with the synthesized peptide.



Western blot analysis of lysates from HUVEC cells, using LGR6 Antibody. The lane on the right is blocked with the synthesized peptide.



Immunohistochemical analysis of paraffin-embedded human Squamous cell carcinoma of lung. 1, Antibody was diluted at 1:200(4° overnight). 2, Tris-EDTA,pH9.0 was used for antigen retrieval. 3,Secondary antibody was diluted at 1:200(room temperature, 45min).